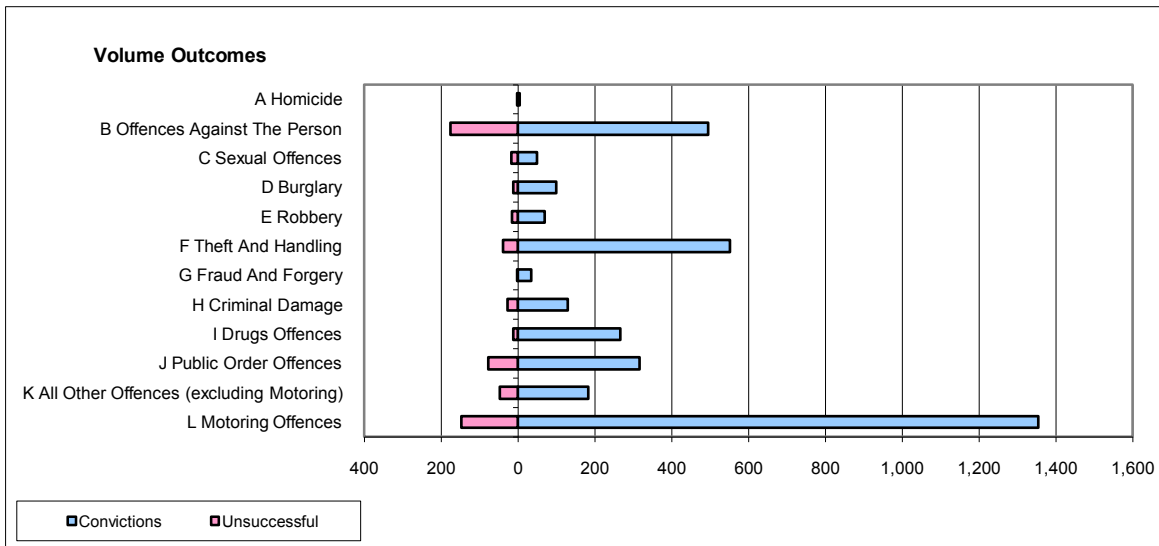
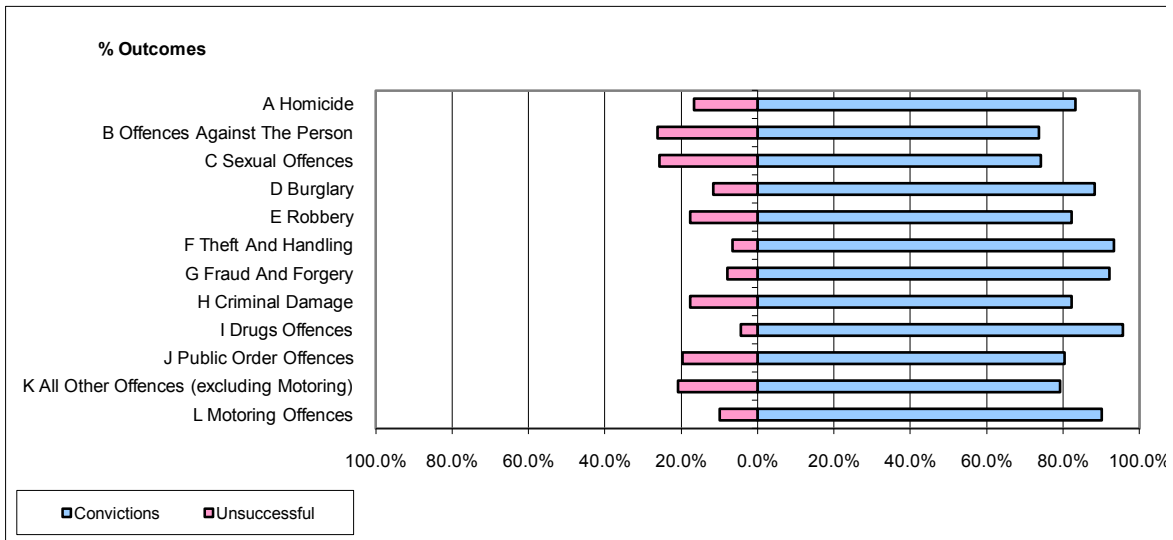


CPS OUTCOMES BY PRINCIPAL OFFENCE CATEGORY

August 2009

P41-WestMidlands



	Convictions		Unsuccessful	
	Number of Defendants	%	Number of Defendants	%
A Homicide	5	83.3%	1	16.7%
B Offences Against The Person	495	73.8%	176	26.2%
C Sexual Offences	49	74.2%	17	25.8%
D Burglary	99	88.4%	13	11.6%
E Robbery	70	82.4%	15	17.6%
F Theft And Handling	552	93.4%	39	6.6%
G Fraud And Forgery	35	92.1%	3	7.9%
H Criminal Damage	130	82.3%	28	17.7%
I Drugs Offences	266	95.7%	12	4.3%
J Public Order Offences	316	80.4%	77	19.6%
K All Other Offences (excluding Motoring)	183	79.2%	48	20.8%
L Motoring Offences	1,354	90.1%	148	9.9%
Admin Finalisations	0	0.0%	23	100.0%
TOTAL	3,554	85.6%	600	14.4%