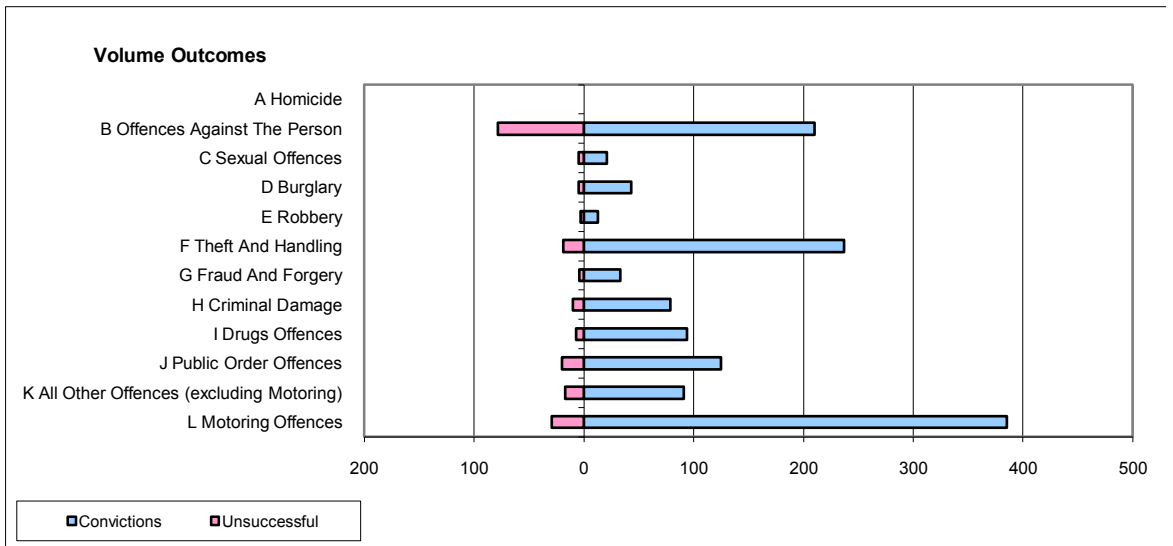
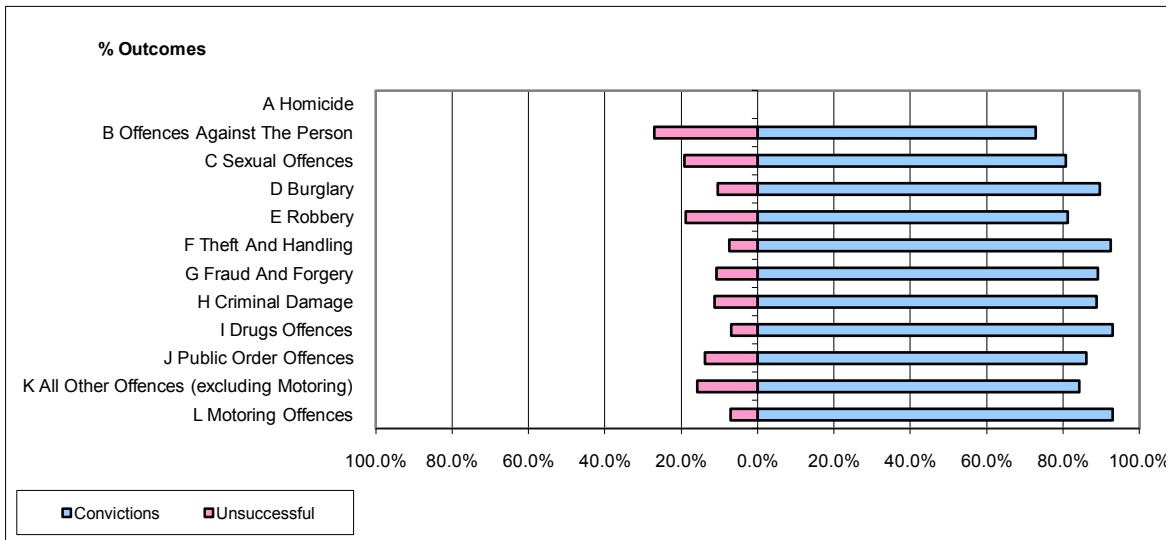


CPS OUTCOMES BY PRINCIPAL OFFENCE CATEGORY

August 2009

P37-Sussex



	Convictions		Unsuccessful	
	Number of Defendants	%	Number of Defendants	%
A Homicide	0	0	0	0
B Offences Against The Person	210	72.9%	78	27.1%
C Sexual Offences	21	80.8%	5	19.2%
D Burglary	43	89.6%	5	10.4%
E Robbery	13	81.3%	3	18.8%
F Theft And Handling	237	92.6%	19	7.4%
G Fraud And Forgery	33	89.2%	4	10.8%
H Criminal Damage	79	88.8%	10	11.2%
I Drugs Offences	94	93.1%	7	6.9%
J Public Order Offences	125	86.2%	20	13.8%
K All Other Offences (excluding Motoring)	91	84.3%	17	15.7%
L Motoring Offences	385	93.0%	29	7.0%
Admin Finalisations	0	0.0%	28	100.0%
TOTAL	1,331	85.5%	225	14.5%