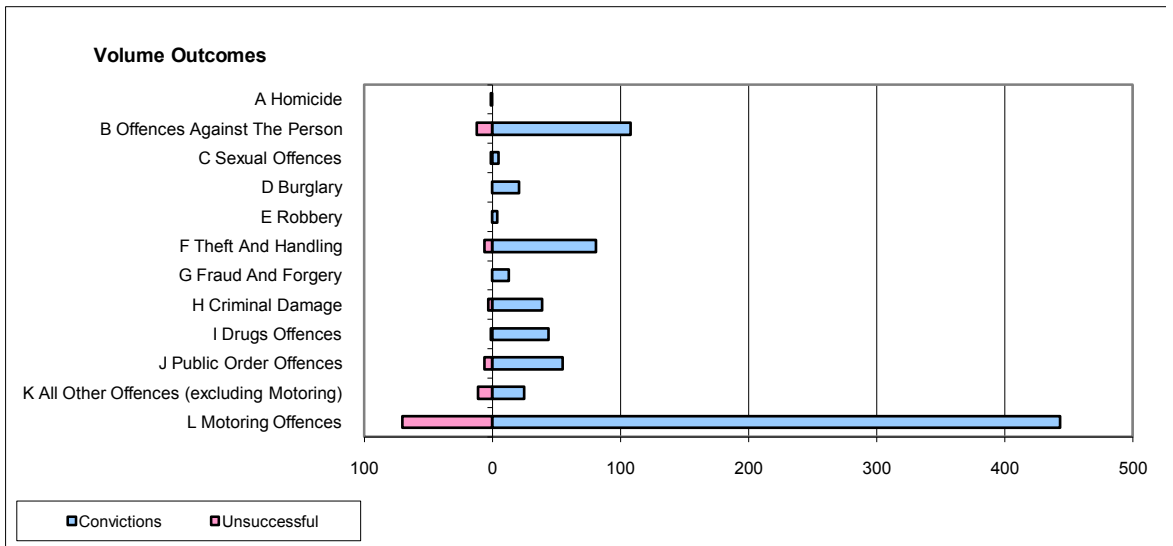
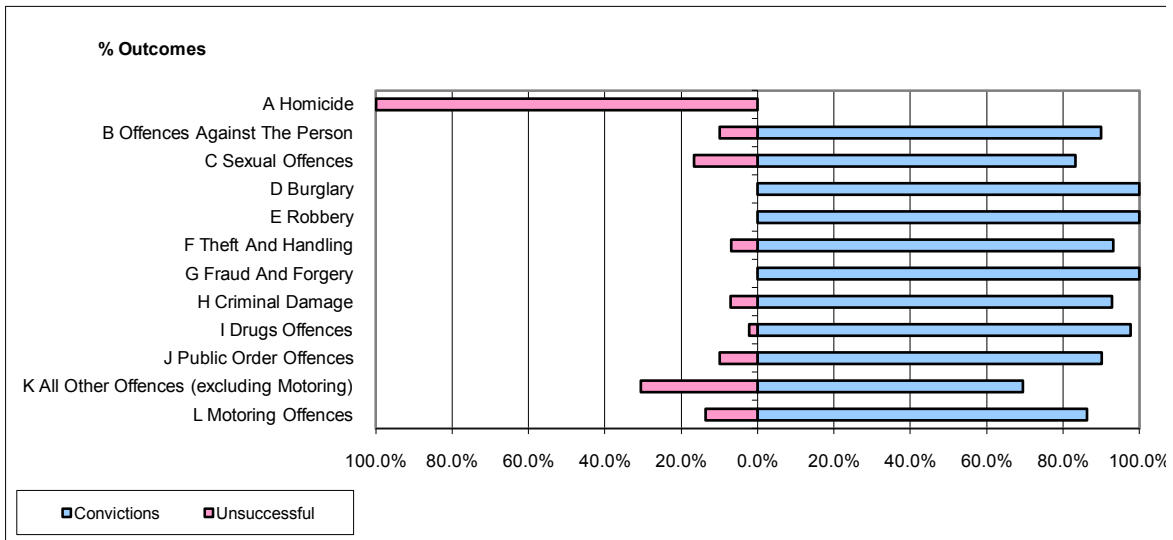


CPS OUTCOMES BY PRINCIPAL OFFENCE CATEGORY

August 2009

P35-Suffolk



	Convictions		Unsuccessful	
	Number of Defendants	%	Number of Defendants	%
A Homicide	0	0.0%	1	100.0%
B Offences Against The Person	108	90.0%	12	10.0%
C Sexual Offences	5	83.3%	1	16.7%
D Burglary	21	100.0%	0	0.0%
E Robbery	4	100.0%	0	0.0%
F Theft And Handling	81	93.1%	6	6.9%
G Fraud And Forgery	13	100.0%	0	0.0%
H Criminal Damage	39	92.9%	3	7.1%
I Drugs Offences	44	97.8%	1	2.2%
J Public Order Offences	55	90.2%	6	9.8%
K All Other Offences (excluding Motoring)	25	69.4%	11	30.6%
L Motoring Offences	443	86.4%	70	13.6%
Admin Finalisations	0	0.0%	17	100.0%
TOTAL	838	86.7%	128	13.3%