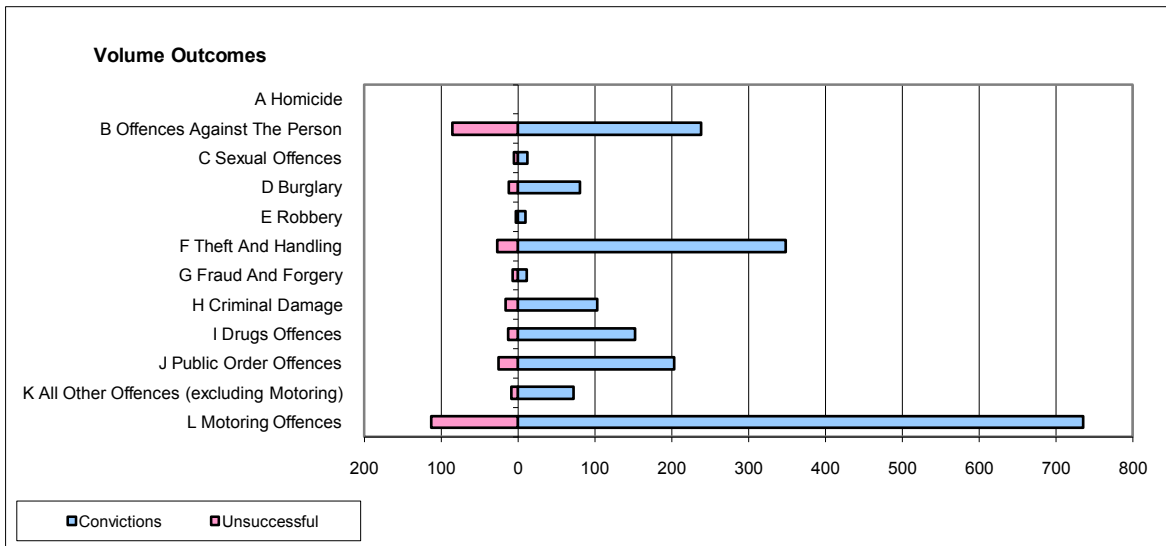
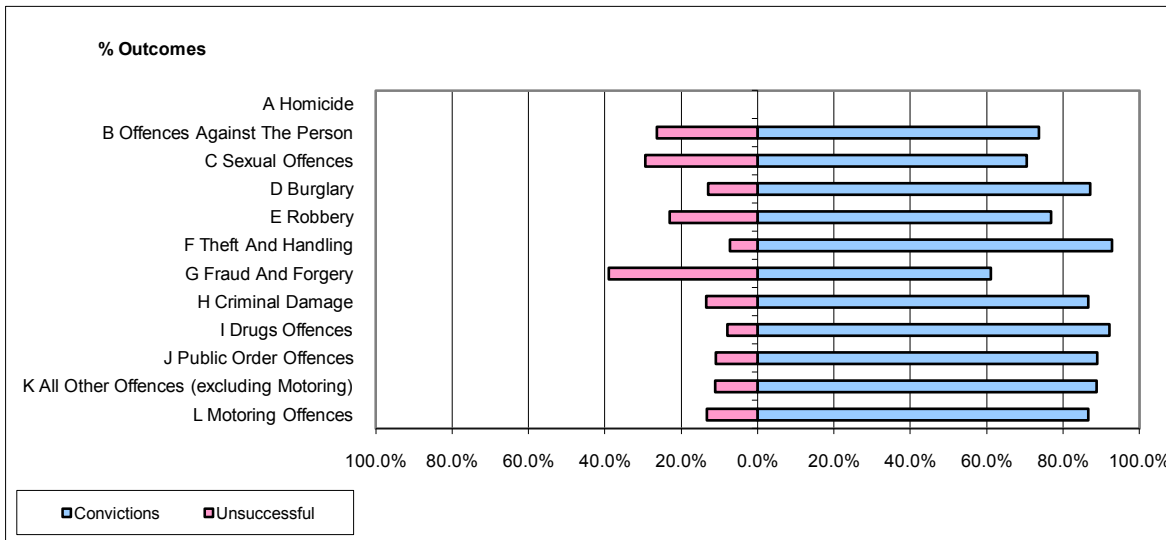


CPS OUTCOMES BY PRINCIPAL OFFENCE CATEGORY

August 2009

P32-SouthWales



	Convictions		Unsuccessful	
	Number of Defendants	%	Number of Defendants	%
A Homicide	0	0	0	0
B Offences Against The Person	238	73.7%	85	26.3%
C Sexual Offences	12	70.6%	5	29.4%
D Burglary	81	87.1%	12	12.9%
E Robbery	10	76.9%	3	23.1%
F Theft And Handling	348	92.8%	27	7.2%
G Fraud And Forgery	11	61.1%	7	38.9%
H Criminal Damage	103	86.6%	16	13.4%
I Drugs Offences	152	92.1%	13	7.9%
J Public Order Offences	203	89.0%	25	11.0%
K All Other Offences (excluding Motoring)	72	88.9%	9	11.1%
L Motoring Offences	735	86.7%	113	13.3%
Admin Finalisations	0	0.0%	75	100.0%
TOTAL	1,965	83.4%	390	16.6%