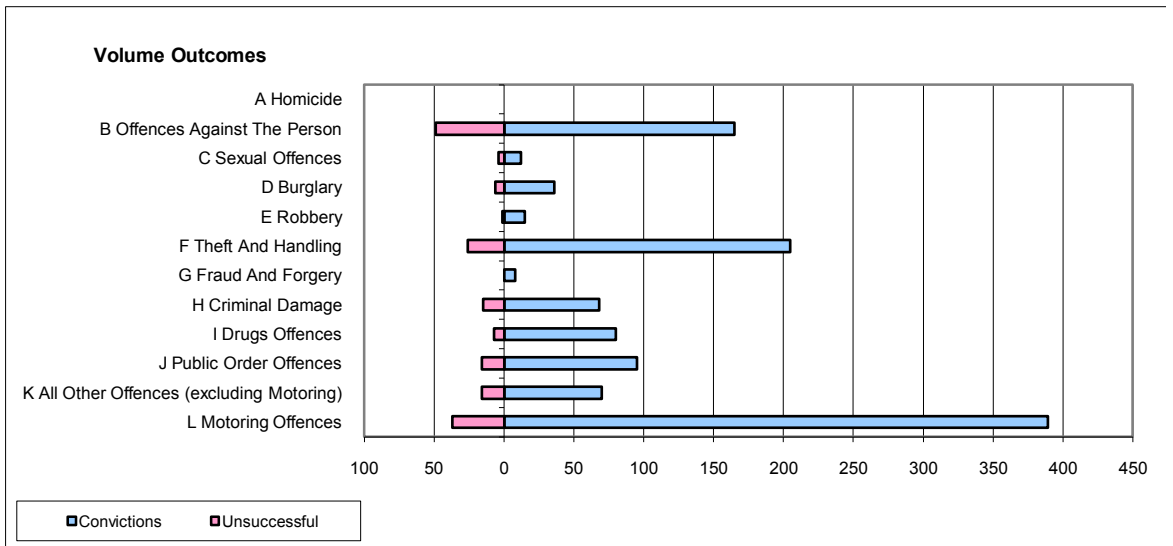
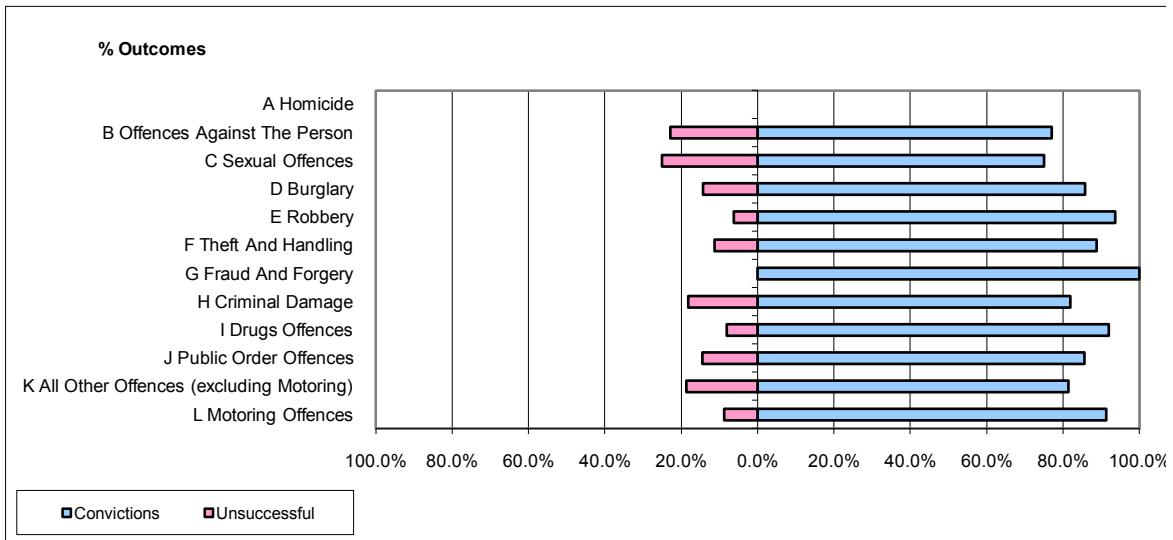


CPS OUTCOMES BY PRINCIPAL OFFENCE CATEGORY

August 2009

P31-Nottinghamshire



	Convictions		Unsuccessful	
	Number of Defendants	%	Number of Defendants	%
A Homicide	0	0	0	0
B Offences Against The Person	165	77.1%	49	22.9%
C Sexual Offences	12	75.0%	4	25.0%
D Burglary	36	85.7%	6	14.3%
E Robbery	15	93.8%	1	6.3%
F Theft And Handling	205	88.7%	26	11.3%
G Fraud And Forgery	8	100.0%	0	0.0%
H Criminal Damage	68	81.9%	15	18.1%
I Drugs Offences	80	92.0%	7	8.0%
J Public Order Offences	95	85.6%	16	14.4%
K All Other Offences (excluding Motoring)	70	81.4%	16	18.6%
L Motoring Offences	389	91.3%	37	8.7%
Admin Finalisations	0	0.0%	31	100.0%
TOTAL	1,143	84.6%	208	15.4%