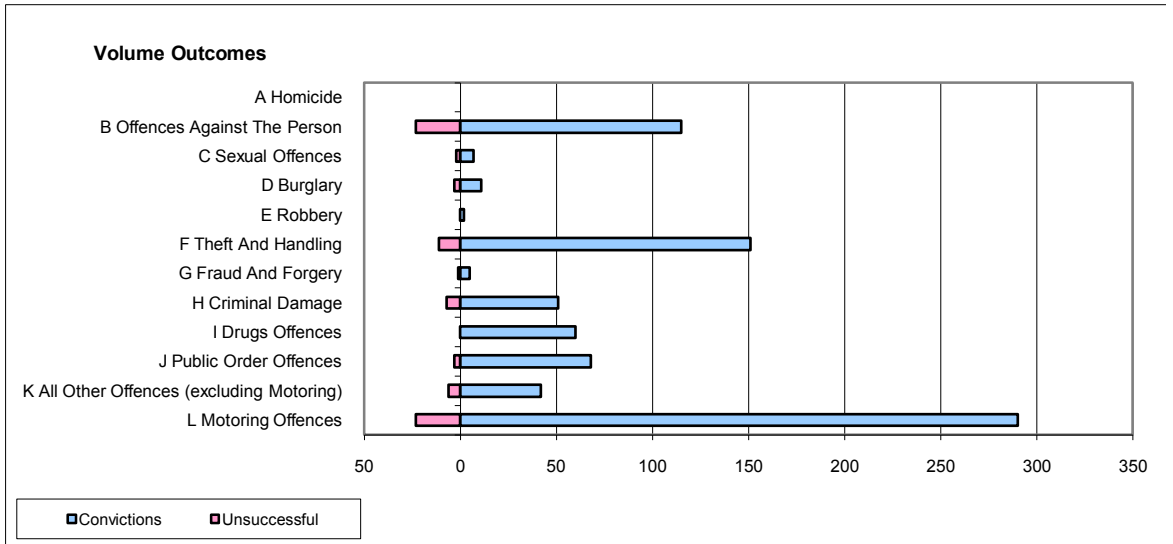
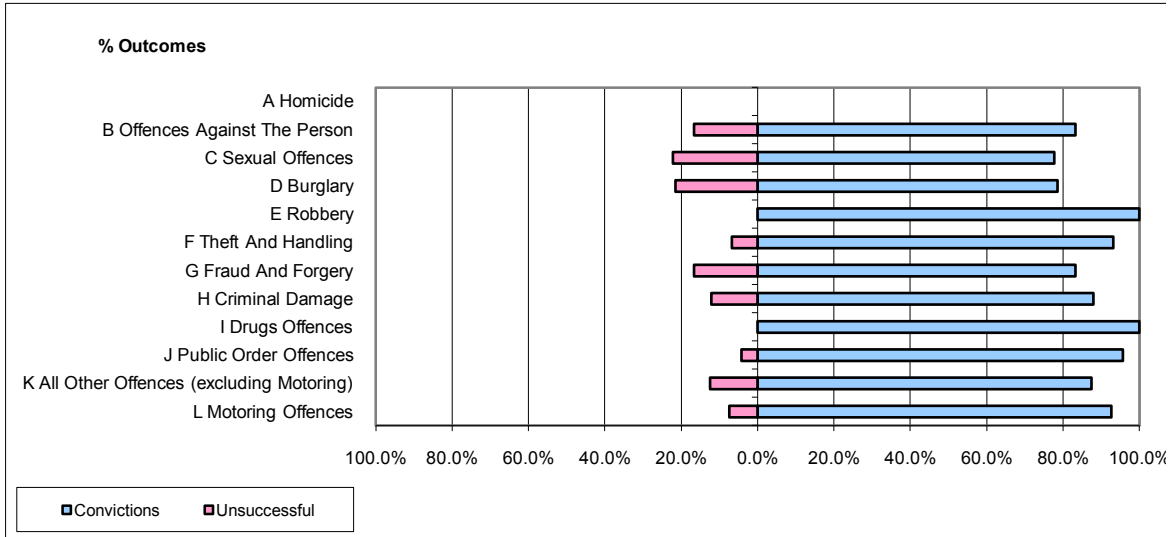


CPS OUTCOMES BY PRINCIPAL OFFENCE CATEGORY

August 2009

P26-Norfolk



| | Convictions | | Unsuccessful | |
|--|----------------------|--------------|----------------------|--------------|
| | Number of Defendants | % | Number of Defendants | % |
| A Homicide | 0 | 0 | 0 | 0 |
| B Offences Against The Person | 115 | 83.3% | 23 | 16.7% |
| C Sexual Offences | 7 | 77.8% | 2 | 22.2% |
| D Burglary | 11 | 78.6% | 3 | 21.4% |
| E Robbery | 2 | 100.0% | 0 | 0.0% |
| F Theft And Handling | 151 | 93.2% | 11 | 6.8% |
| G Fraud And Forgery | 5 | 83.3% | 1 | 16.7% |
| H Criminal Damage | 51 | 87.9% | 7 | 12.1% |
| I Drugs Offences | 60 | 100.0% | 0 | 0.0% |
| J Public Order Offences | 68 | 95.8% | 3 | 4.2% |
| K All Other Offences (excluding Motoring) | 42 | 87.5% | 6 | 12.5% |
| L Motoring Offences | 290 | 92.7% | 23 | 7.3% |
| Admin Finalisations | 0 | 0.0% | 14 | 100.0% |
| TOTAL | 802 | 89.6% | 93 | 10.4% |