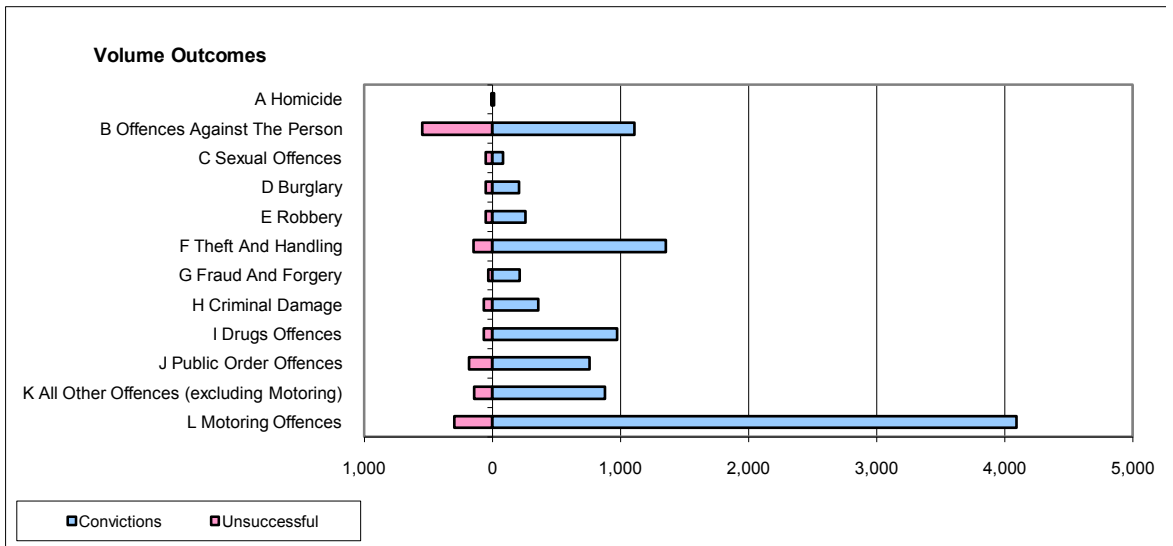
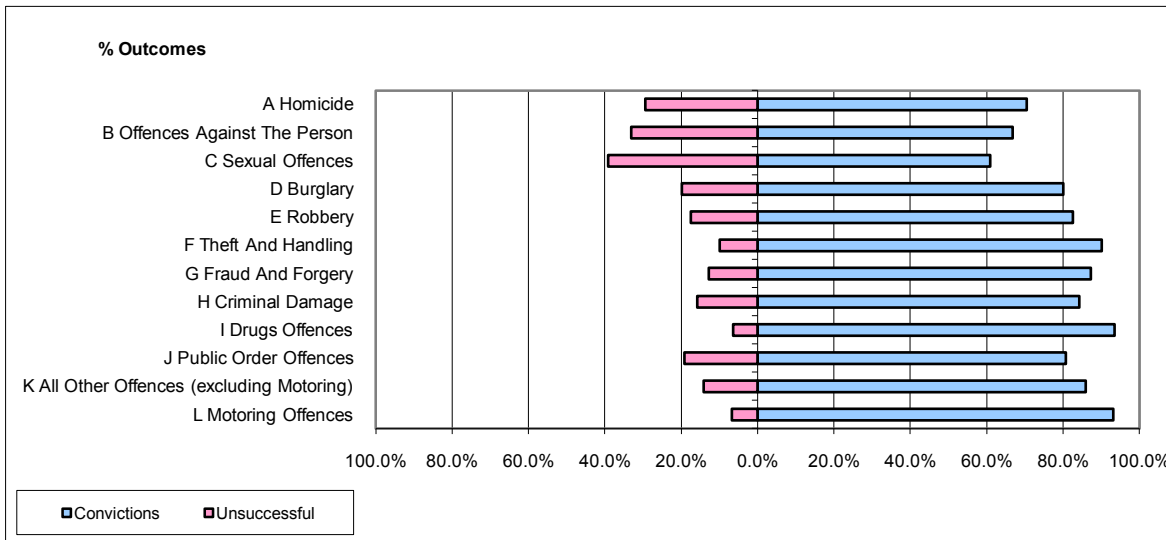


**CPS OUTCOMES BY PRINCIPAL OFFENCE CATEGORY**

**August 2009**

**P25-Metropolitan&City**



	Convictions		Unsuccessful	
	Number of Defendants	%	Number of Defendants	%
<b>A Homicide</b>	12	70.6%	5	29.4%
<b>B Offences Against The Person</b>	1,109	66.9%	549	33.1%
<b>C Sexual Offences</b>	84	60.9%	54	39.1%
<b>D Burglary</b>	206	80.2%	51	19.8%
<b>E Robbery</b>	256	82.6%	54	17.4%
<b>F Theft And Handling</b>	1,354	90.1%	149	9.9%
<b>G Fraud And Forgery</b>	213	87.3%	31	12.7%
<b>H Criminal Damage</b>	358	84.2%	67	15.8%
<b>I Drugs Offences</b>	976	93.6%	67	6.4%
<b>J Public Order Offences</b>	760	80.8%	181	19.2%
<b>K All Other Offences (excluding Motoring)</b>	881	86.0%	144	14.0%
<b>L Motoring Offences</b>	4,091	93.2%	297	6.8%
<b>Admin Finalisations</b>	0	0.0%	236	100.0%
<b>TOTAL</b>	<b>10,300</b>	<b>84.5%</b>	<b>1,885</b>	<b>15.5%</b>