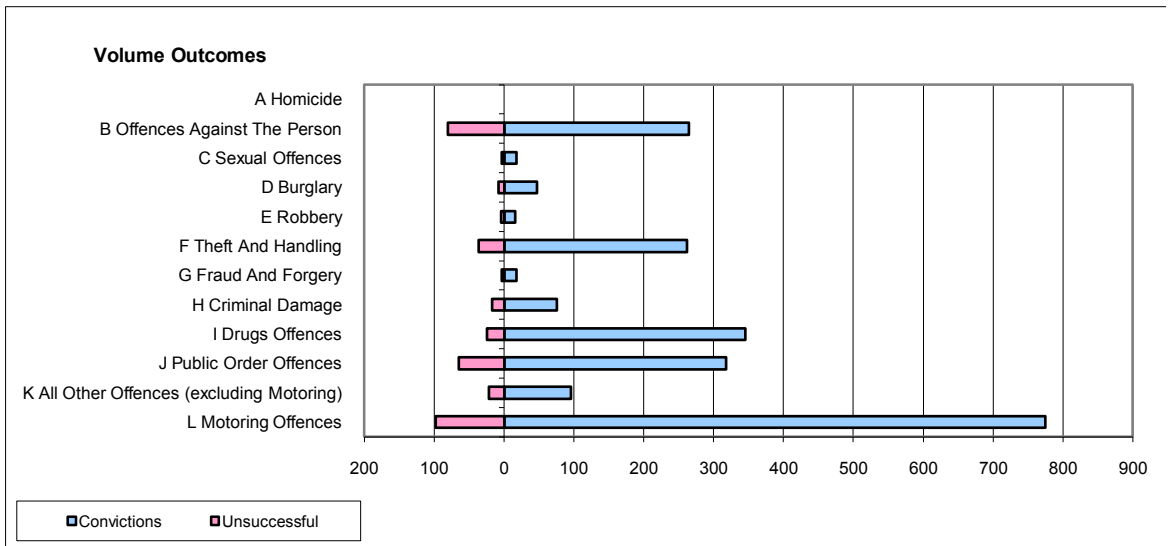
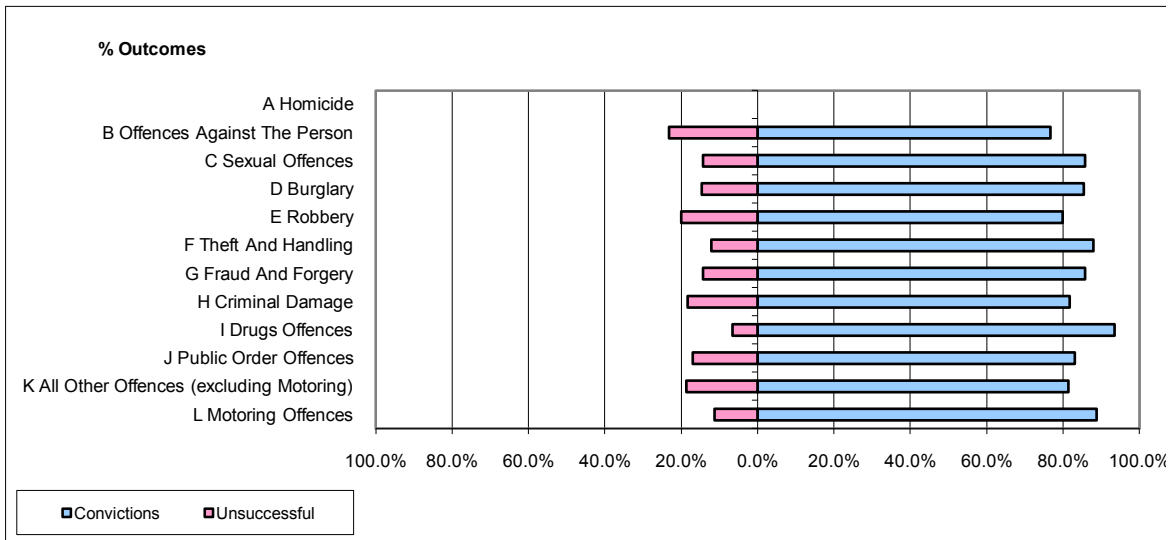


CPS OUTCOMES BY PRINCIPAL OFFENCE CATEGORY

August 2009

P24-Merseyside



	Convictions		Unsuccessful	
	Number of Defendants	%	Number of Defendants	%
A Homicide	0	0	0	0
B Offences Against The Person	265	76.8%	80	23.2%
C Sexual Offences	18	85.7%	3	14.3%
D Burglary	47	85.5%	8	14.5%
E Robbery	16	80.0%	4	20.0%
F Theft And Handling	262	87.9%	36	12.1%
G Fraud And Forgery	18	85.7%	3	14.3%
H Criminal Damage	76	81.7%	17	18.3%
I Drugs Offences	345	93.5%	24	6.5%
J Public Order Offences	318	83.0%	65	17.0%
K All Other Offences (excluding Motoring)	96	81.4%	22	18.6%
L Motoring Offences	775	88.8%	98	11.2%
Admin Finalisations	0	0.0%	27	100.0%
TOTAL	2,236	85.2%	387	14.8%