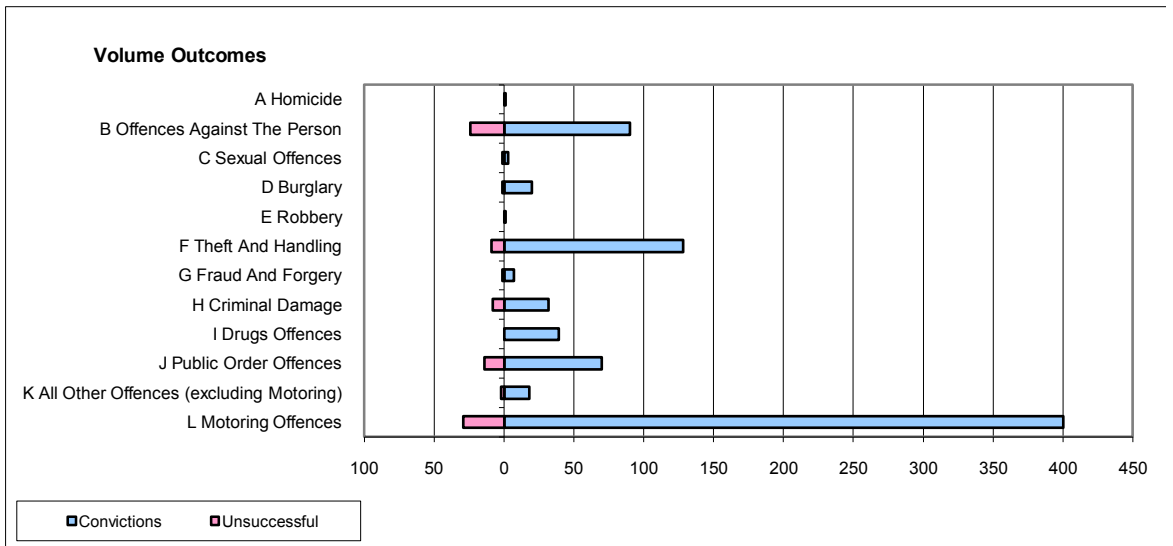
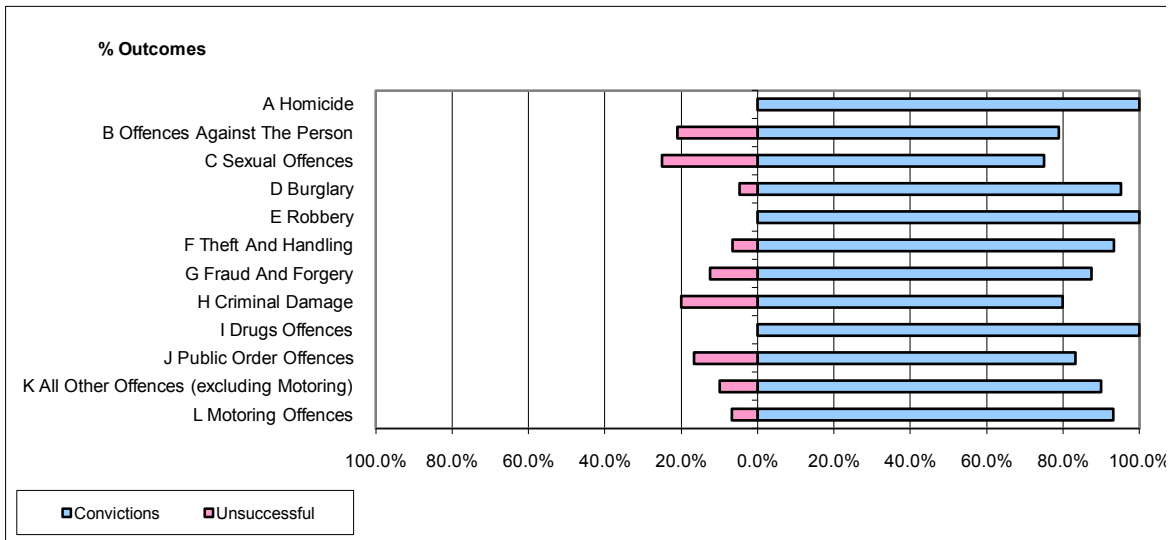


CPS OUTCOMES BY PRINCIPAL OFFENCE CATEGORY

August 2009

P23-Lincolnshire



	Convictions		Unsuccessful	
	Number of Defendants	%	Number of Defendants	%
A Homicide	1	100.0%	0	0.0%
B Offences Against The Person	90	78.9%	24	21.1%
C Sexual Offences	3	75.0%	1	25.0%
D Burglary	20	95.2%	1	4.8%
E Robbery	1	100.0%	0	0.0%
F Theft And Handling	128	93.4%	9	6.6%
G Fraud And Forgery	7	87.5%	1	12.5%
H Criminal Damage	32	80.0%	8	20.0%
I Drugs Offences	39	100.0%	0	0.0%
J Public Order Offences	70	83.3%	14	16.7%
K All Other Offences (excluding Motoring)	18	90.0%	2	10.0%
L Motoring Offences	400	93.2%	29	6.8%
Admin Finalisations	0	0.0%	6	100.0%
TOTAL	809	89.5%	95	10.5%