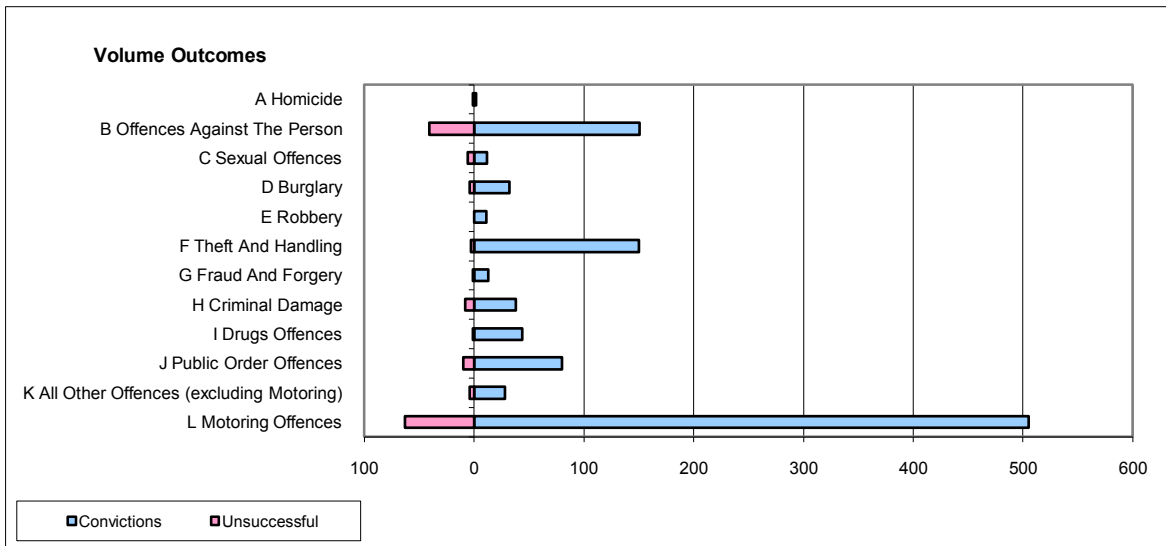
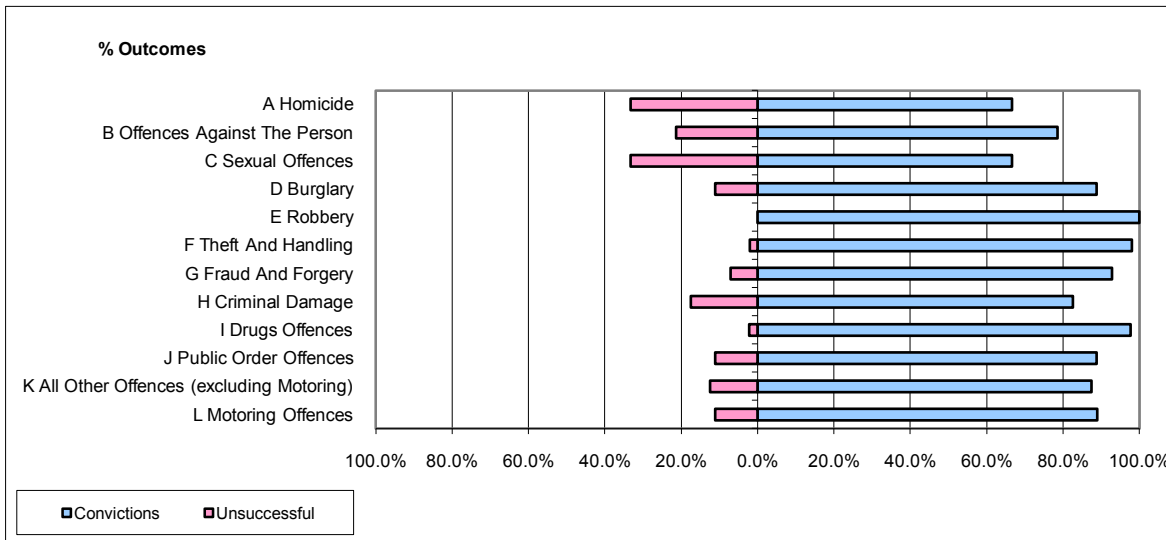


CPS OUTCOMES BY PRINCIPAL OFFENCE CATEGORY

August 2009

P22-Leicestershire



	Convictions		Unsuccessful	
	Number of Defendants	%	Number of Defendants	%
A Homicide	2	66.7%	1	33.3%
B Offences Against The Person	151	78.6%	41	21.4%
C Sexual Offences	12	66.7%	6	33.3%
D Burglary	32	88.9%	4	11.1%
E Robbery	11	100.0%	0	0.0%
F Theft And Handling	150	98.0%	3	2.0%
G Fraud And Forgery	13	92.9%	1	7.1%
H Criminal Damage	38	82.6%	8	17.4%
I Drugs Offences	44	97.8%	1	2.2%
J Public Order Offences	80	88.9%	10	11.1%
K All Other Offences (excluding Motoring)	28	87.5%	4	12.5%
L Motoring Offences	505	88.9%	63	11.1%
Admin Finalisations	0	0.0%	38	100.0%
TOTAL	1,066	85.6%	180	14.4%