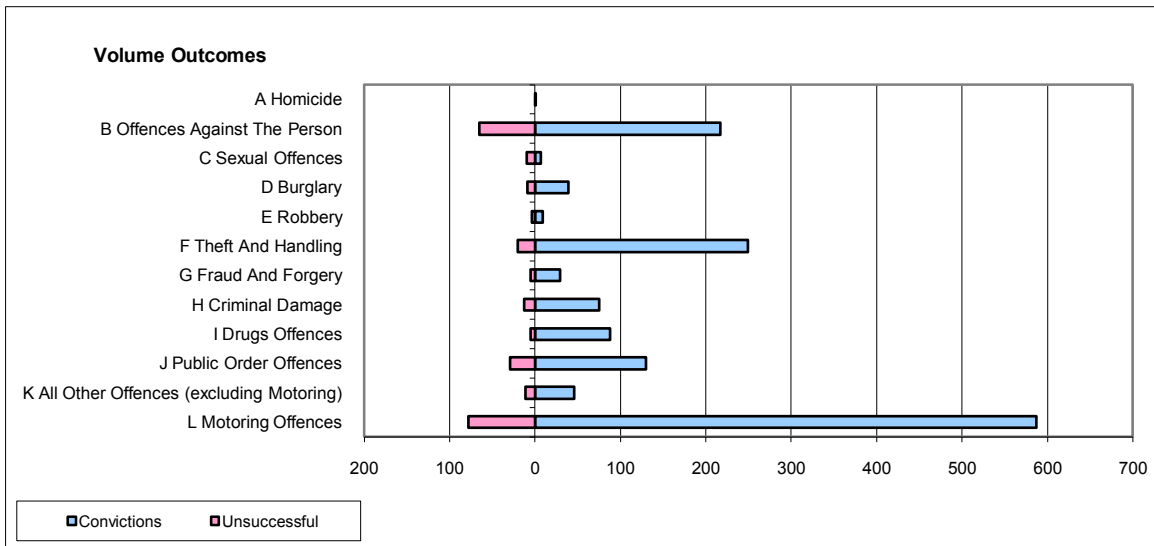
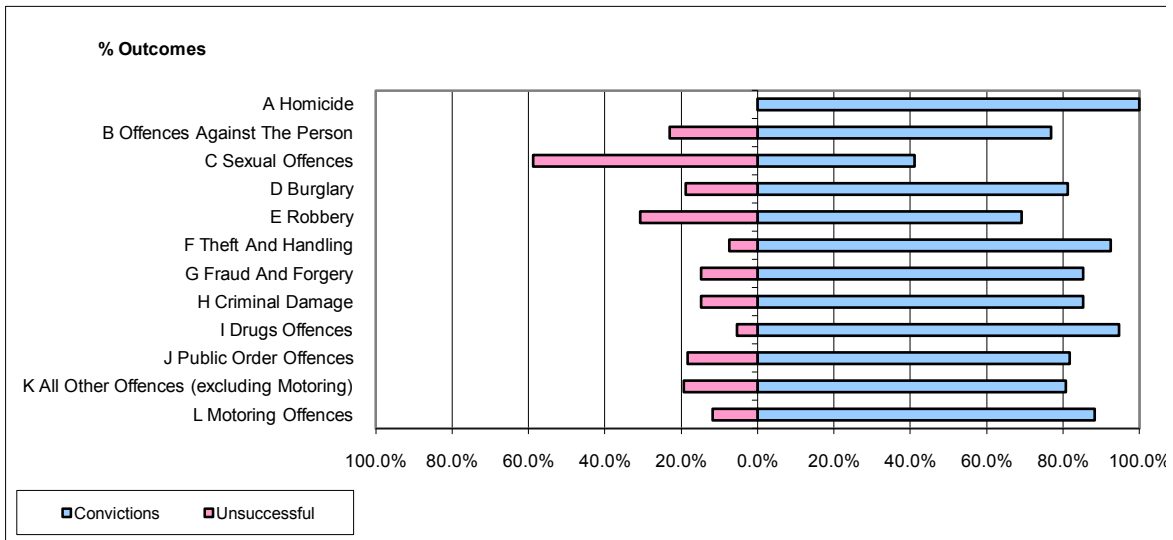


CPS OUTCOMES BY PRINCIPAL OFFENCE CATEGORY

August 2009

P20-Kent



	Convictions		Unsuccessful	
	Number of Defendants	%	Number of Defendants	%
A Homicide	1	100.0%	0	0.0%
B Offences Against The Person	217	77.0%	65	23.0%
C Sexual Offences	7	41.2%	10	58.8%
D Burglary	39	81.3%	9	18.8%
E Robbery	9	69.2%	4	30.8%
F Theft And Handling	249	92.6%	20	7.4%
G Fraud And Forgery	29	85.3%	5	14.7%
H Criminal Damage	75	85.2%	13	14.8%
I Drugs Offences	88	94.6%	5	5.4%
J Public Order Offences	130	81.8%	29	18.2%
K All Other Offences (excluding Motoring)	46	80.7%	11	19.3%
L Motoring Offences	587	88.3%	78	11.7%
Admin Finalisations	0	0.0%	23	100.0%
TOTAL	1,477	84.4%	272	15.6%