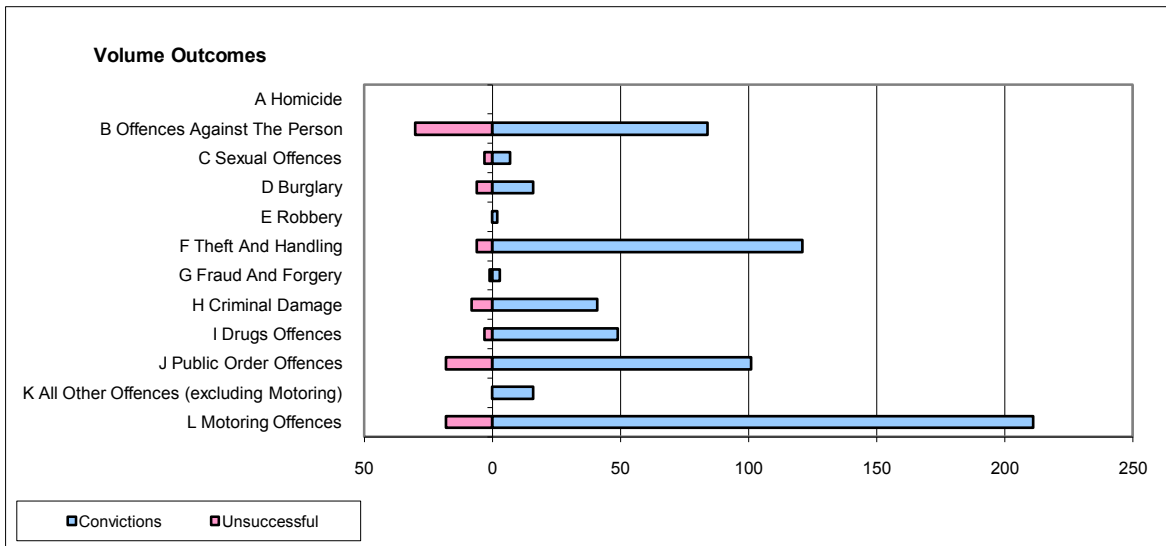
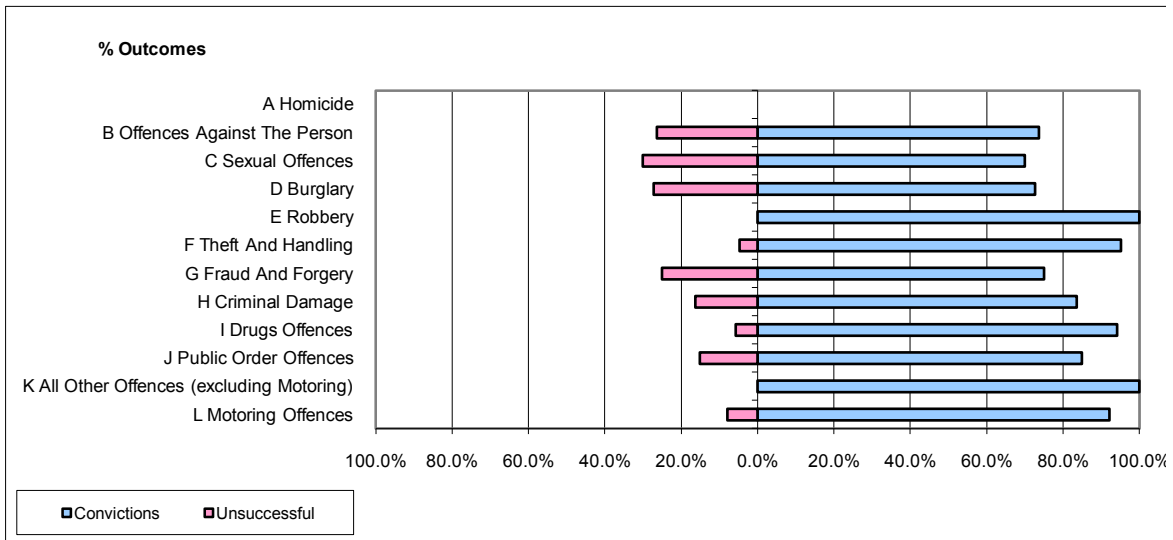


**CPS OUTCOMES BY PRINCIPAL OFFENCE CATEGORY**

**August 2009**

**P16-Gwent**



	Convictions		Unsuccessful	
	Number of Defendants	%	Number of Defendants	%
<b>A Homicide</b>	0	0	0	0
<b>B Offences Against The Person</b>	84	73.7%	30	26.3%
<b>C Sexual Offences</b>	7	70.0%	3	30.0%
<b>D Burglary</b>	16	72.7%	6	27.3%
<b>E Robbery</b>	2	100.0%	0	0.0%
<b>F Theft And Handling</b>	121	95.3%	6	4.7%
<b>G Fraud And Forgery</b>	3	75.0%	1	25.0%
<b>H Criminal Damage</b>	41	83.7%	8	16.3%
<b>I Drugs Offences</b>	49	94.2%	3	5.8%
<b>J Public Order Offences</b>	101	84.9%	18	15.1%
<b>K All Other Offences (excluding Motoring)</b>	16	100.0%	0	0.0%
<b>L Motoring Offences</b>	211	92.1%	18	7.9%
<b>Admin Finalisations</b>	0	0.0%	1	100.0%
<b>TOTAL</b>	<b>651</b>	<b>87.4%</b>	<b>94</b>	<b>12.6%</b>