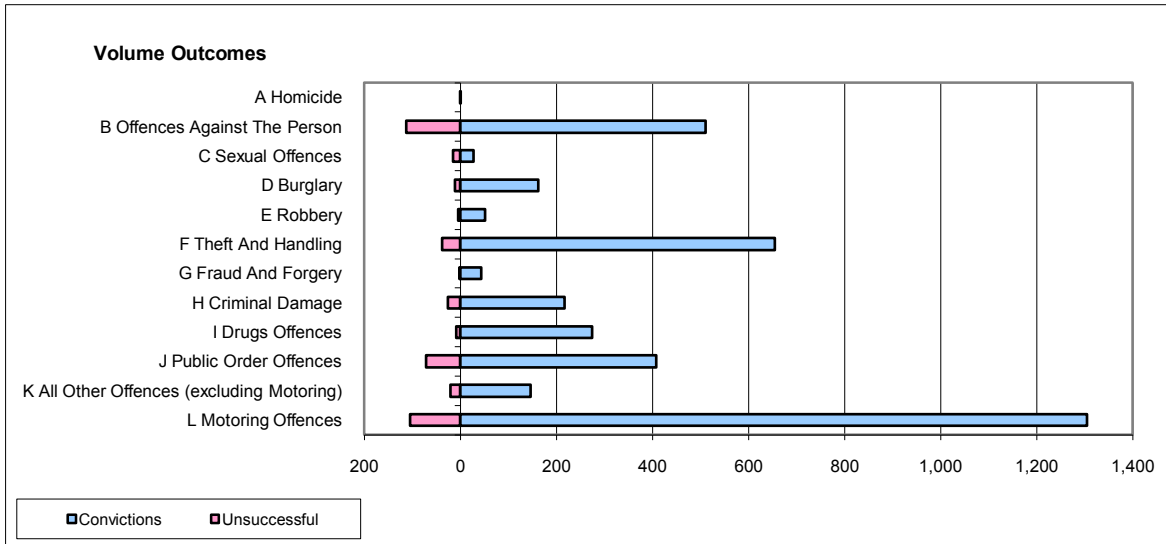
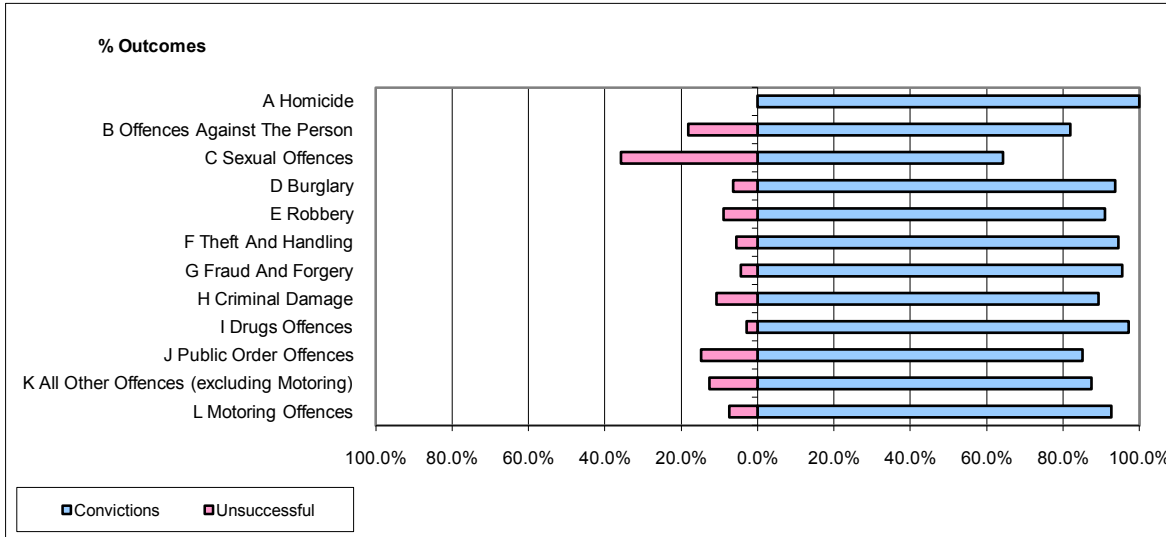


**CPS OUTCOMES BY PRINCIPAL OFFENCE CATEGORY**

**August 2009**

**P15-GreaterManchester**



	Convictions		Unsuccessful	
	Number of Defendants	%	Number of Defendants	%
<b>A Homicide</b>	1	100.0%	0	0.0%
<b>B Offences Against The Person</b>	511	81.9%	113	18.1%
<b>C Sexual Offences</b>	27	64.3%	15	35.7%
<b>D Burglary</b>	162	93.6%	11	6.4%
<b>E Robbery</b>	51	91.1%	5	8.9%
<b>F Theft And Handling</b>	655	94.5%	38	5.5%
<b>G Fraud And Forgery</b>	43	95.6%	2	4.4%
<b>H Criminal Damage</b>	217	89.3%	26	10.7%
<b>I Drugs Offences</b>	274	97.2%	8	2.8%
<b>J Public Order Offences</b>	408	85.2%	71	14.8%
<b>K All Other Offences (excluding Motoring)</b>	146	87.4%	21	12.6%
<b>L Motoring Offences</b>	1,304	92.6%	104	7.4%
<b>Admin Finalisations</b>	0	0.0%	40	100.0%
<b>TOTAL</b>	<b>3,799</b>	<b>89.3%</b>	<b>454</b>	<b>10.7%</b>