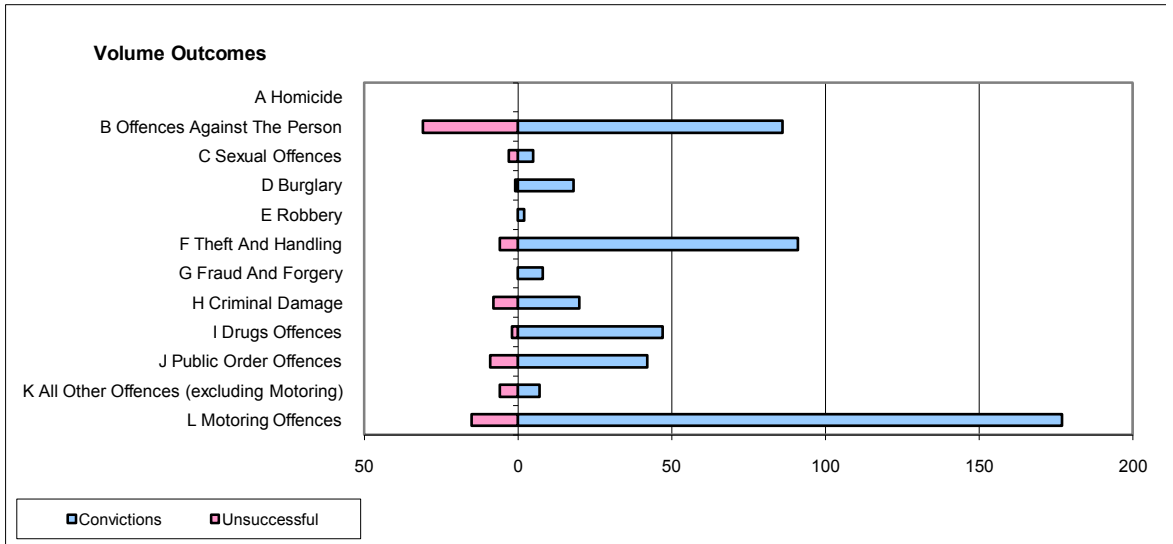
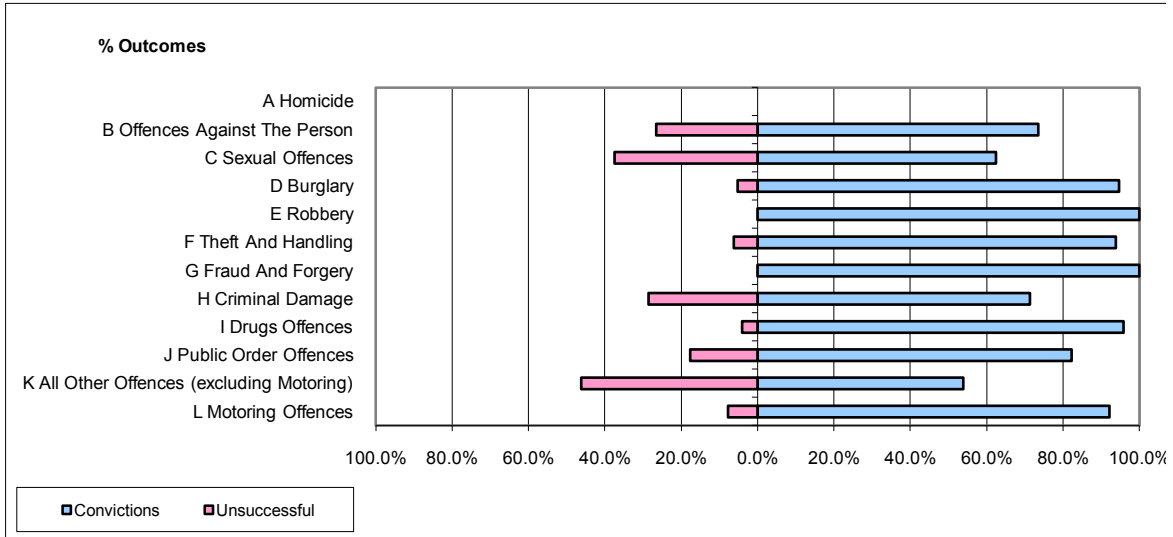


CPS OUTCOMES BY PRINCIPAL OFFENCE CATEGORY

August 2009

P14-Gloucestershire



	Convictions		Unsuccessful	
	Number of Defendants	%	Number of Defendants	%
A Homicide	0	0	0	0
B Offences Against The Person	86	73.5%	31	26.5%
C Sexual Offences	5	62.5%	3	37.5%
D Burglary	18	94.7%	1	5.3%
E Robbery	2	100.0%	0	0.0%
F Theft And Handling	91	93.8%	6	6.2%
G Fraud And Forgery	8	100.0%	0	0.0%
H Criminal Damage	20	71.4%	8	28.6%
I Drugs Offences	47	95.9%	2	4.1%
J Public Order Offences	42	82.4%	9	17.6%
K All Other Offences (excluding Motoring)	7	53.8%	6	46.2%
L Motoring Offences	177	92.2%	15	7.8%
Admin Finalisations	0	0.0%	3	100.0%
TOTAL	503	85.7%	84	14.3%