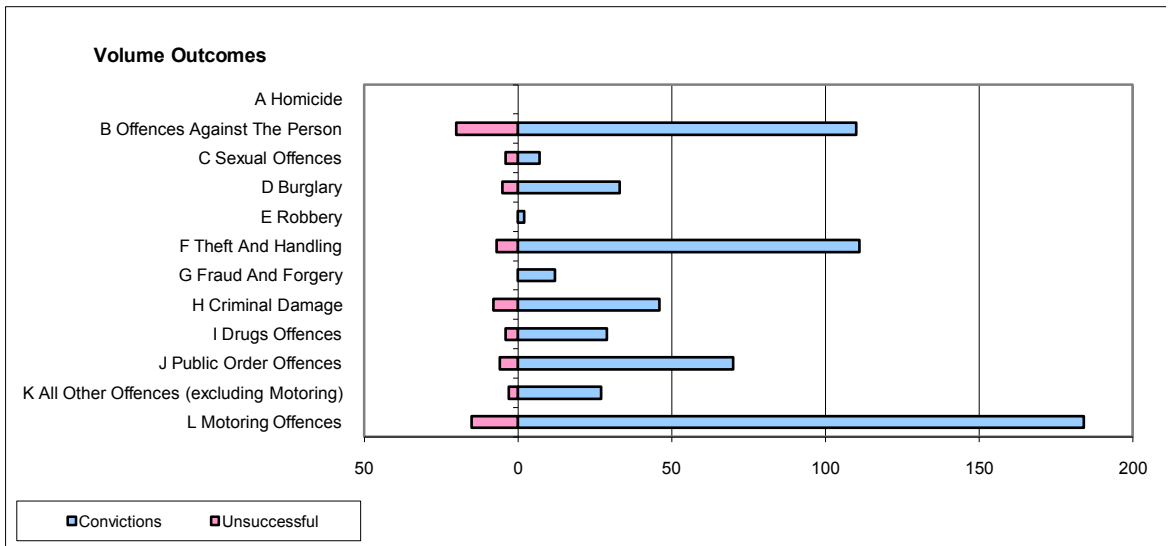
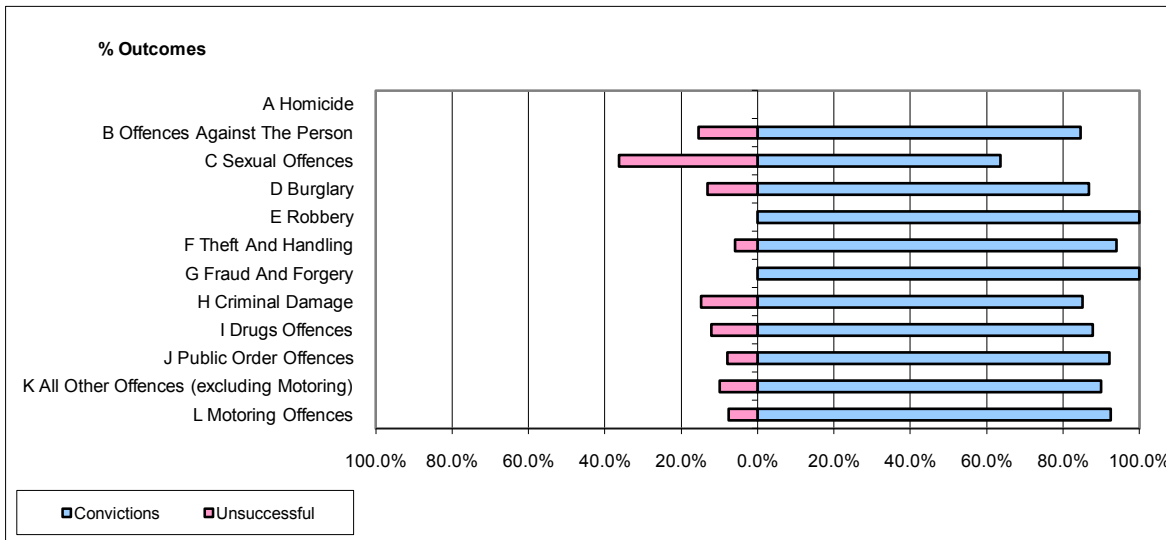


CPS OUTCOMES BY PRINCIPAL OFFENCE CATEGORY

August 2009

P11-Durham



	Convictions		Unsuccessful	
	Number of Defendants	%	Number of Defendants	%
A Homicide	0	0	0	0
B Offences Against The Person	110	84.6%	20	15.4%
C Sexual Offences	7	63.6%	4	36.4%
D Burglary	33	86.8%	5	13.2%
E Robbery	2	100.0%	0	0.0%
F Theft And Handling	111	94.1%	7	5.9%
G Fraud And Forgery	12	100.0%	0	0.0%
H Criminal Damage	46	85.2%	8	14.8%
I Drugs Offences	29	87.9%	4	12.1%
J Public Order Offences	70	92.1%	6	7.9%
K All Other Offences (excluding Motoring)	27	90.0%	3	10.0%
L Motoring Offences	184	92.5%	15	7.5%
Admin Finalisations	0	0.0%	4	100.0%
TOTAL	631	89.3%	76	10.7%