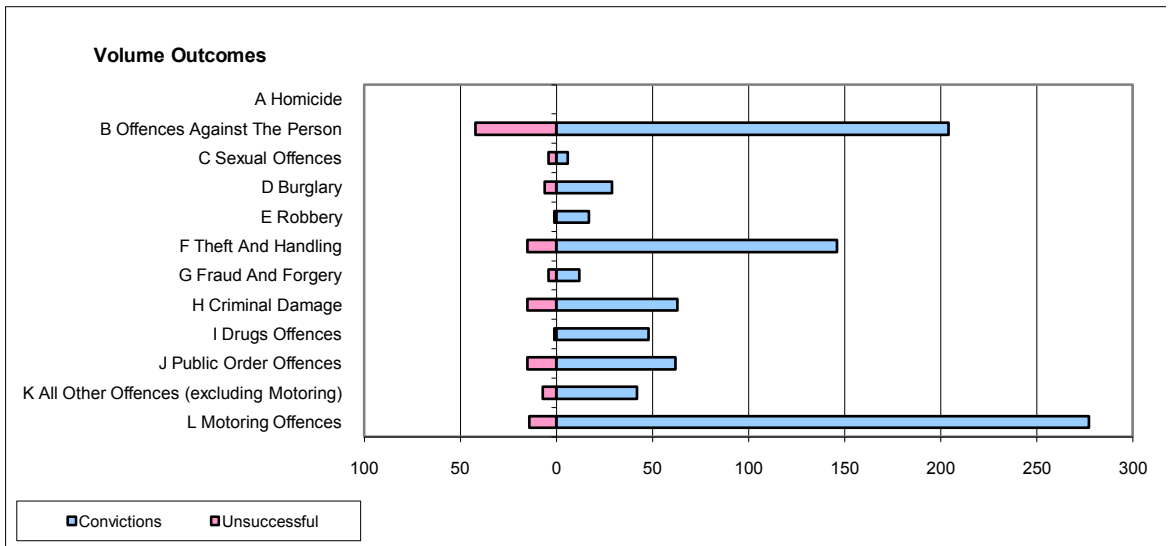
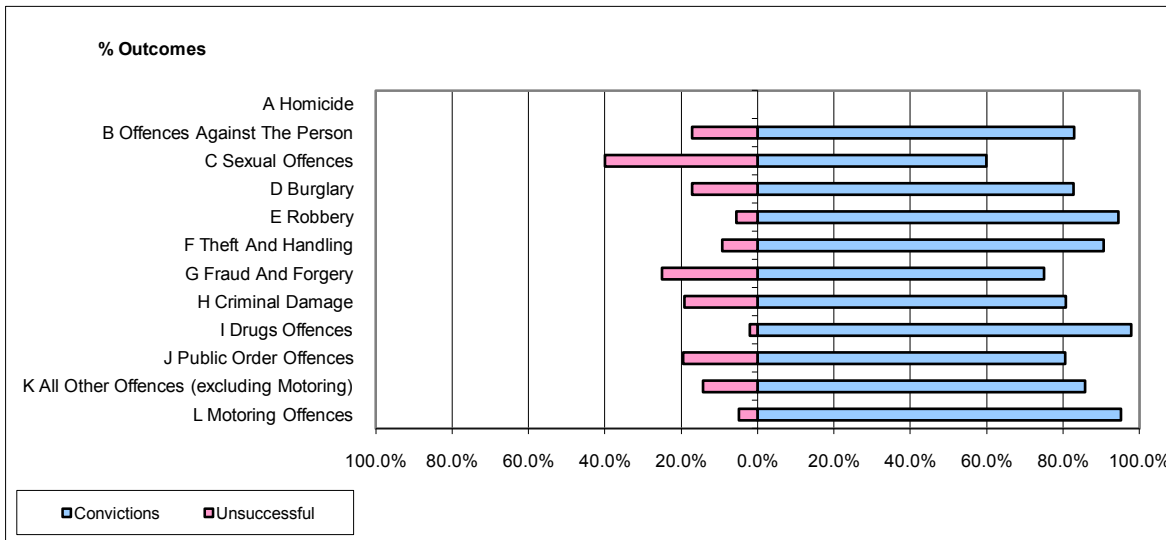


**CPS OUTCOMES BY PRINCIPAL OFFENCE CATEGORY**

**August 2009**

**P08-Derbyshire**



	Convictions		Unsuccessful	
	Number of Defendants	%	Number of Defendants	%
<b>A Homicide</b>	<b>0</b>	<b>0</b>	<b>0</b>	<b>0</b>
<b>B Offences Against The Person</b>	<b>204</b>	<b>82.9%</b>	<b>42</b>	<b>17.1%</b>
<b>C Sexual Offences</b>	<b>6</b>	<b>60.0%</b>	<b>4</b>	<b>40.0%</b>
<b>D Burglary</b>	<b>29</b>	<b>82.9%</b>	<b>6</b>	<b>17.1%</b>
<b>E Robbery</b>	<b>17</b>	<b>94.4%</b>	<b>1</b>	<b>5.6%</b>
<b>F Theft And Handling</b>	<b>146</b>	<b>90.7%</b>	<b>15</b>	<b>9.3%</b>
<b>G Fraud And Forgery</b>	<b>12</b>	<b>75.0%</b>	<b>4</b>	<b>25.0%</b>
<b>H Criminal Damage</b>	<b>63</b>	<b>80.8%</b>	<b>15</b>	<b>19.2%</b>
<b>I Drugs Offences</b>	<b>48</b>	<b>98.0%</b>	<b>1</b>	<b>2.0%</b>
<b>J Public Order Offences</b>	<b>62</b>	<b>80.5%</b>	<b>15</b>	<b>19.5%</b>
<b>K All Other Offences (excluding Motoring)</b>	<b>42</b>	<b>85.7%</b>	<b>7</b>	<b>14.3%</b>
<b>L Motoring Offences</b>	<b>277</b>	<b>95.2%</b>	<b>14</b>	<b>4.8%</b>
<b>Admin Finalisations</b>	<b>0</b>	<b>0.0%</b>	<b>11</b>	<b>100.0%</b>
<b>TOTAL</b>	<b>906</b>	<b>87.0%</b>	<b>135</b>	<b>13.0%</b>