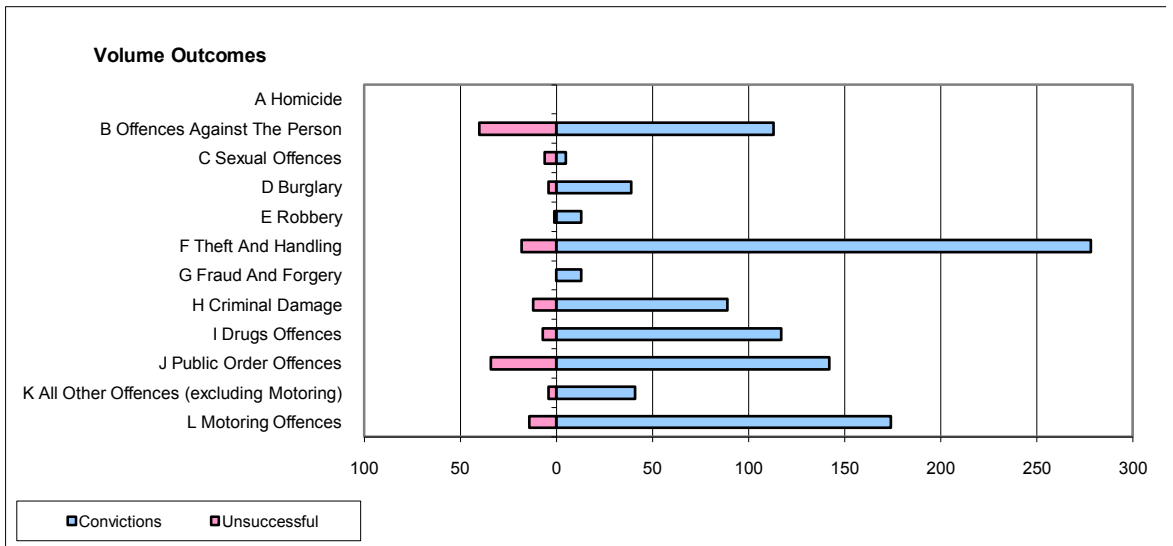
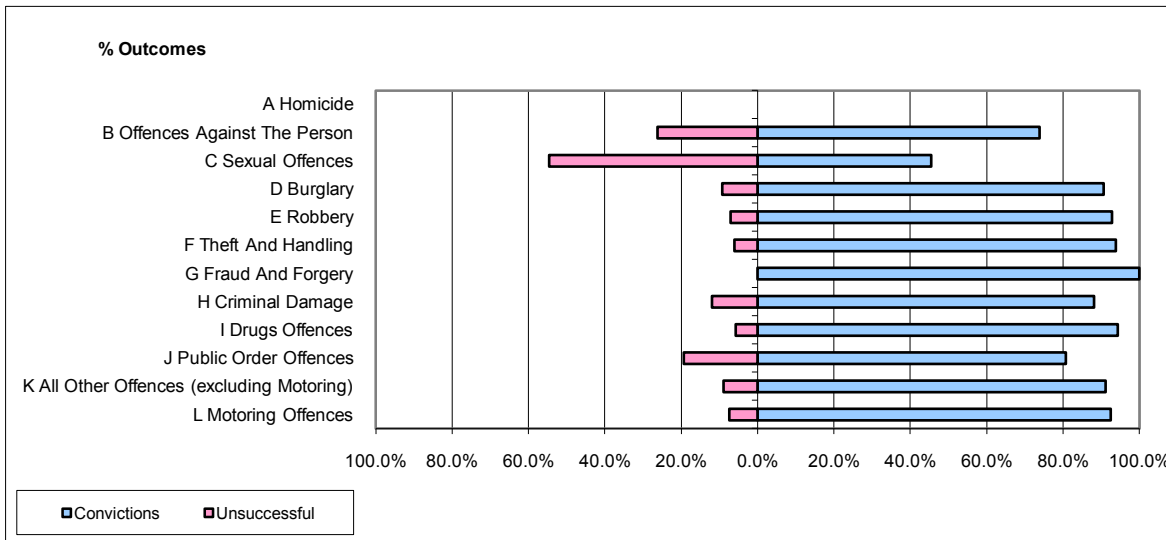


**CPS OUTCOMES BY PRINCIPAL OFFENCE CATEGORY**

**August 2009**

**P06-Cleveland**



	Convictions		Unsuccessful	
	Number of Defendants	%	Number of Defendants	%
<b>A Homicide</b>	0	0	0	0
<b>B Offences Against The Person</b>	113	73.9%	40	26.1%
<b>C Sexual Offences</b>	5	45.5%	6	54.5%
<b>D Burglary</b>	39	90.7%	4	9.3%
<b>E Robbery</b>	13	92.9%	1	7.1%
<b>F Theft And Handling</b>	278	93.9%	18	6.1%
<b>G Fraud And Forgery</b>	13	100.0%	0	0.0%
<b>H Criminal Damage</b>	89	88.1%	12	11.9%
<b>I Drugs Offences</b>	117	94.4%	7	5.6%
<b>J Public Order Offences</b>	142	80.7%	34	19.3%
<b>K All Other Offences (excluding Motoring)</b>	41	91.1%	4	8.9%
<b>L Motoring Offences</b>	174	92.6%	14	7.4%
<b>Admin Finalisations</b>	0	0.0%	13	100.0%
<b>TOTAL</b>	<b>1,024</b>	<b>87.0%</b>	<b>153</b>	<b>13.0%</b>