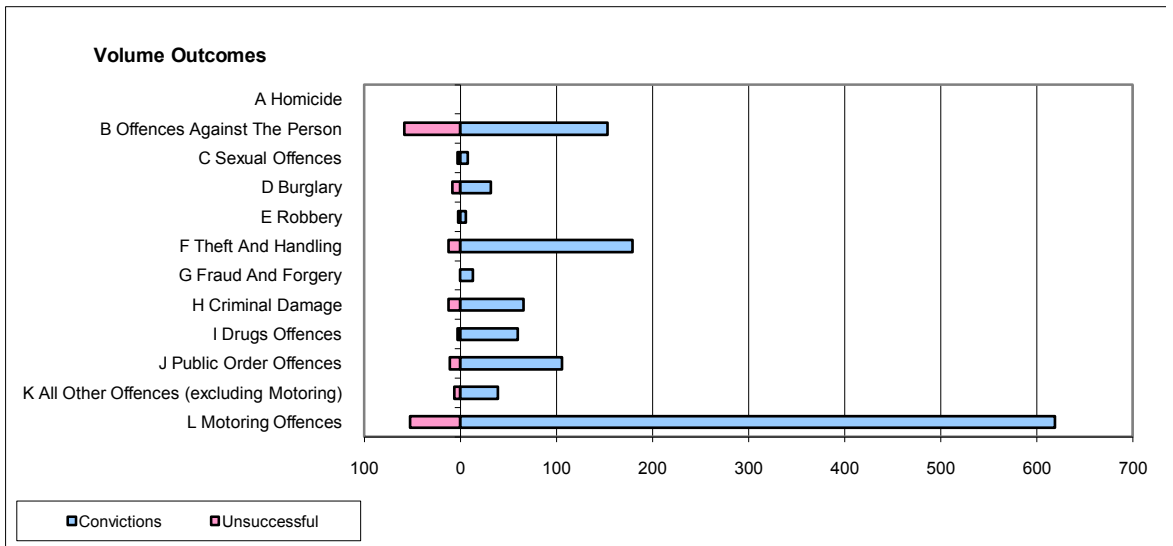
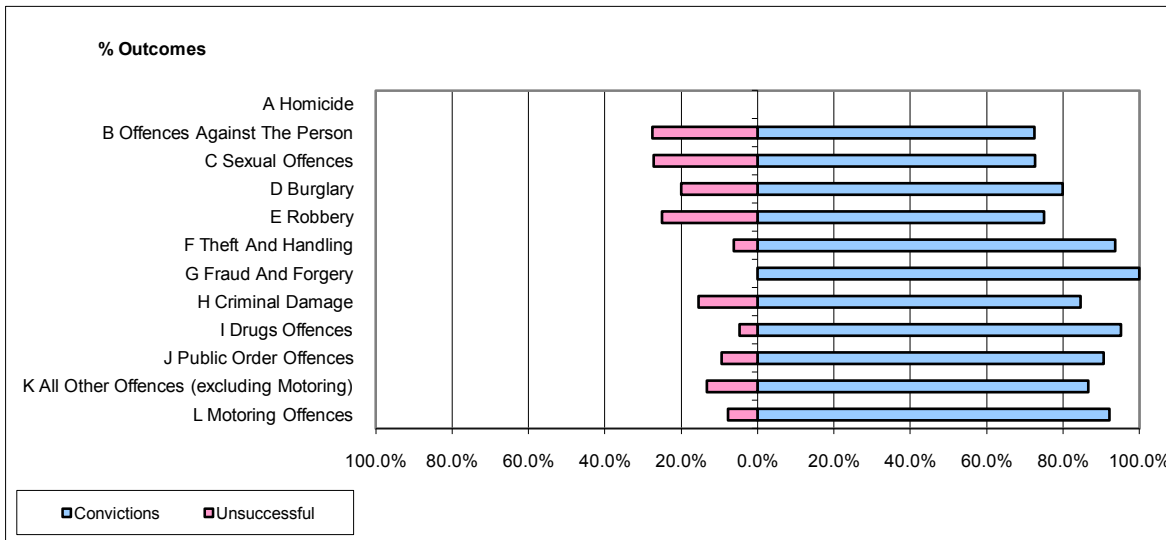


CPS OUTCOMES BY PRINCIPAL OFFENCE CATEGORY

August 2009

P04-Cheshire



	Convictions		Unsuccessful	
	Number of Defendants	%	Number of Defendants	%
A Homicide	0	0	0	0
B Offences Against The Person	153	72.5%	58	27.5%
C Sexual Offences	8	72.7%	3	27.3%
D Burglary	32	80.0%	8	20.0%
E Robbery	6	75.0%	2	25.0%
F Theft And Handling	179	93.7%	12	6.3%
G Fraud And Forgery	13	100.0%	0	0.0%
H Criminal Damage	66	84.6%	12	15.4%
I Drugs Offences	60	95.2%	3	4.8%
J Public Order Offences	106	90.6%	11	9.4%
K All Other Offences (excluding Motoring)	39	86.7%	6	13.3%
L Motoring Offences	619	92.3%	52	7.7%
Admin Finalisations	0	0.0%	10	100.0%
TOTAL	1,281	87.9%	177	12.1%