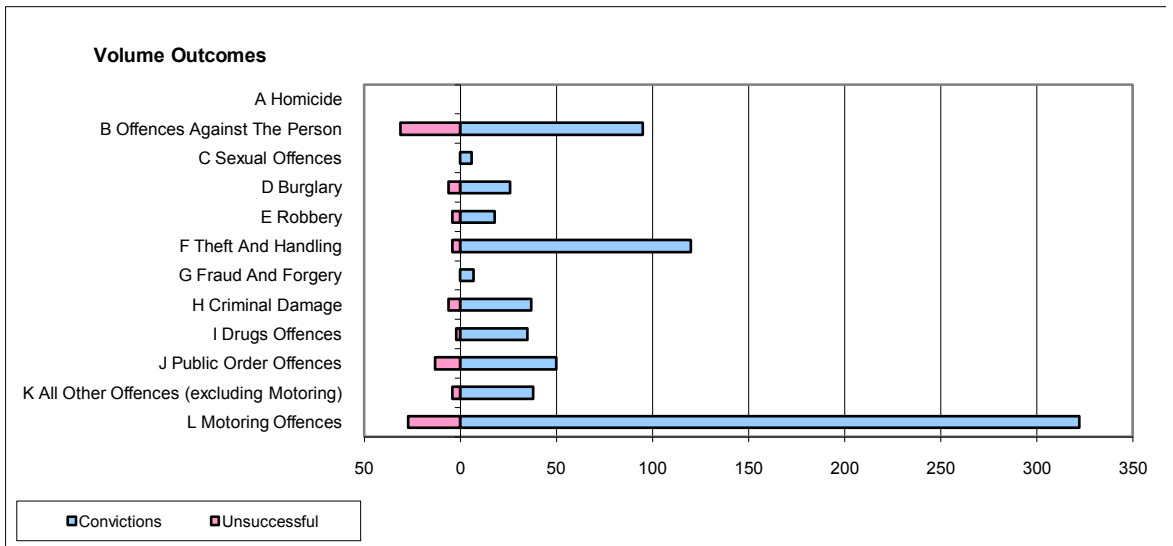
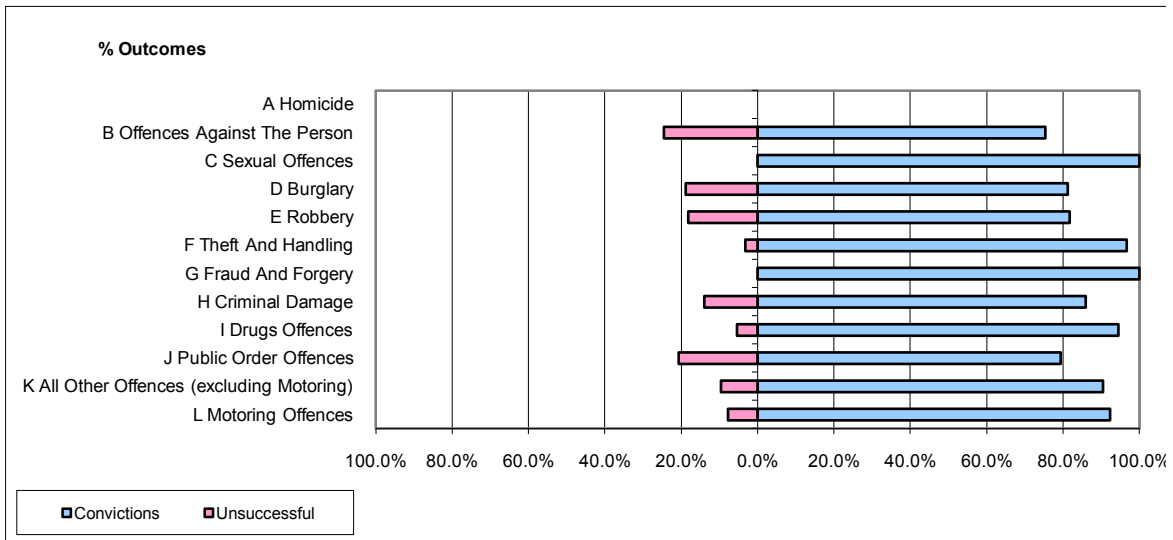


**CPS OUTCOMES BY PRINCIPAL OFFENCE CATEGORY**

**August 2009**

**P02-Bedfordshire**



	Convictions		Unsuccessful	
	Number of Defendants	%	Number of Defendants	%
<b>A Homicide</b>	0	0	0	0
<b>B Offences Against The Person</b>	95	75.4%	31	24.6%
<b>C Sexual Offences</b>	6	100.0%	0	0.0%
<b>D Burglary</b>	26	81.3%	6	18.8%
<b>E Robbery</b>	18	81.8%	4	18.2%
<b>F Theft And Handling</b>	120	96.8%	4	3.2%
<b>G Fraud And Forgery</b>	7	100.0%	0	0.0%
<b>H Criminal Damage</b>	37	86.0%	6	14.0%
<b>I Drugs Offences</b>	35	94.6%	2	5.4%
<b>J Public Order Offences</b>	50	79.4%	13	20.6%
<b>K All Other Offences (excluding Motoring)</b>	38	90.5%	4	9.5%
<b>L Motoring Offences</b>	322	92.3%	27	7.7%
<b>Admin Finalisations</b>	0	0.0%	8	100.0%
<b>TOTAL</b>	<b>754</b>	<b>87.8%</b>	<b>105</b>	<b>12.2%</b>