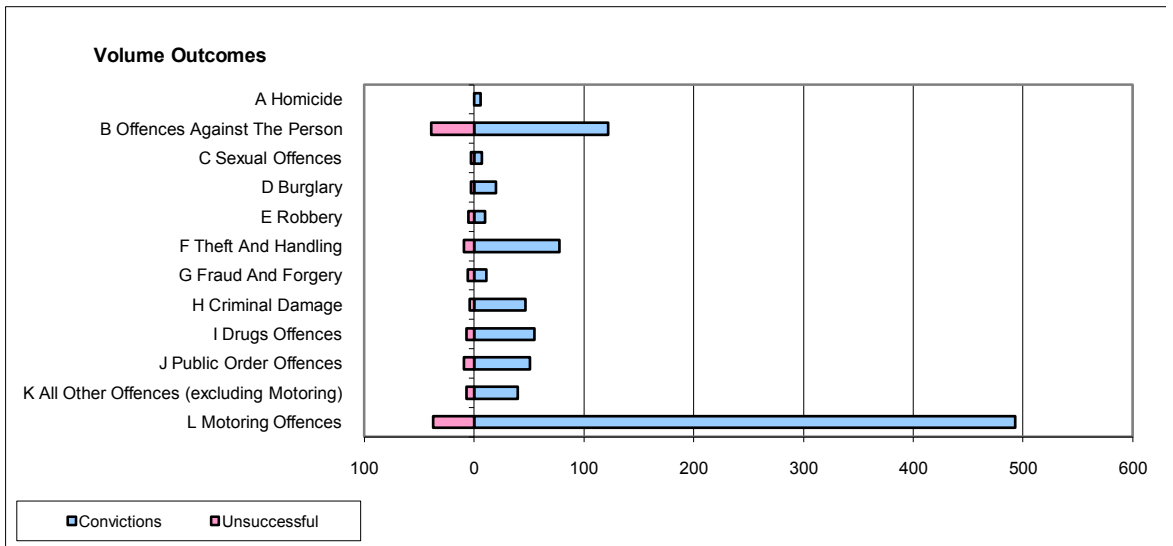
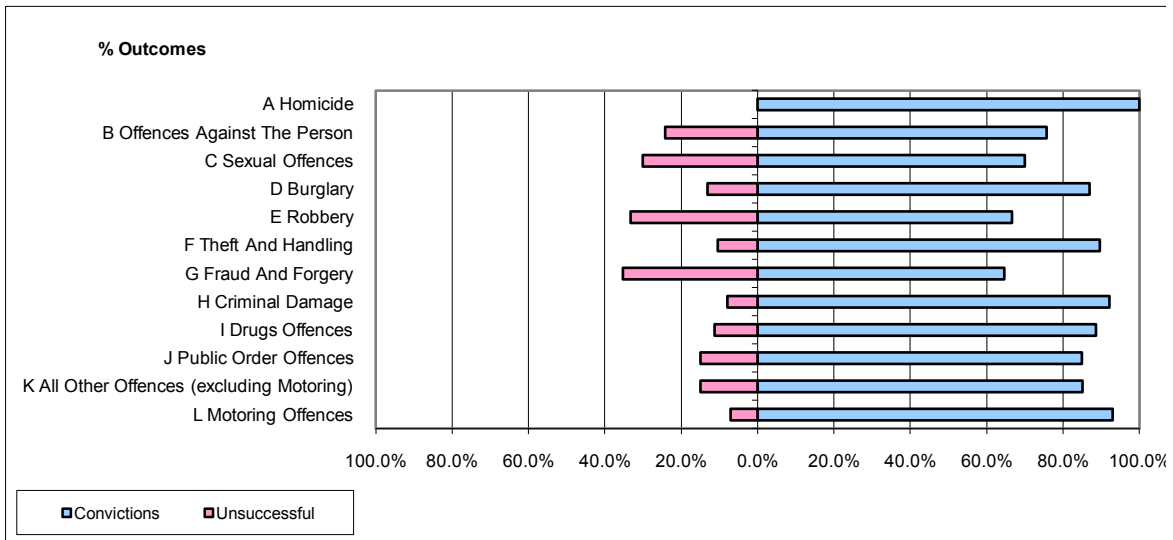


**CPS OUTCOMES BY PRINCIPAL OFFENCE CATEGORY**

**July 2009**

**P43-Wiltshire**



	Convictions		Unsuccessful	
	Number of Defendants	%	Number of Defendants	%
<b>A Homicide</b>	6	100.0%	0	0.0%
<b>B Offences Against The Person</b>	122	75.8%	39	24.2%
<b>C Sexual Offences</b>	7	70.0%	3	30.0%
<b>D Burglary</b>	20	87.0%	3	13.0%
<b>E Robbery</b>	10	66.7%	5	33.3%
<b>F Theft And Handling</b>	78	89.7%	9	10.3%
<b>G Fraud And Forgery</b>	11	64.7%	6	35.3%
<b>H Criminal Damage</b>	47	92.2%	4	7.8%
<b>I Drugs Offences</b>	55	88.7%	7	11.3%
<b>J Public Order Offences</b>	51	85.0%	9	15.0%
<b>K All Other Offences (excluding Motoring)</b>	40	85.1%	7	14.9%
<b>L Motoring Offences</b>	493	93.0%	37	7.0%
<b>Admin Finalisations</b>	0	0.0%	6	100.0%
<b>TOTAL</b>	940	87.4%	135	12.6%