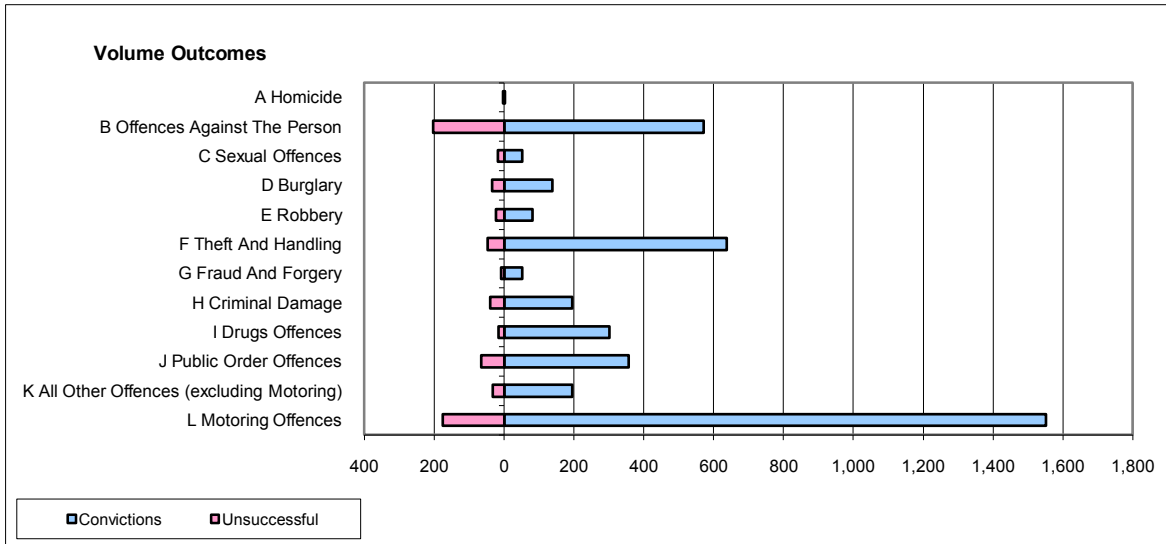
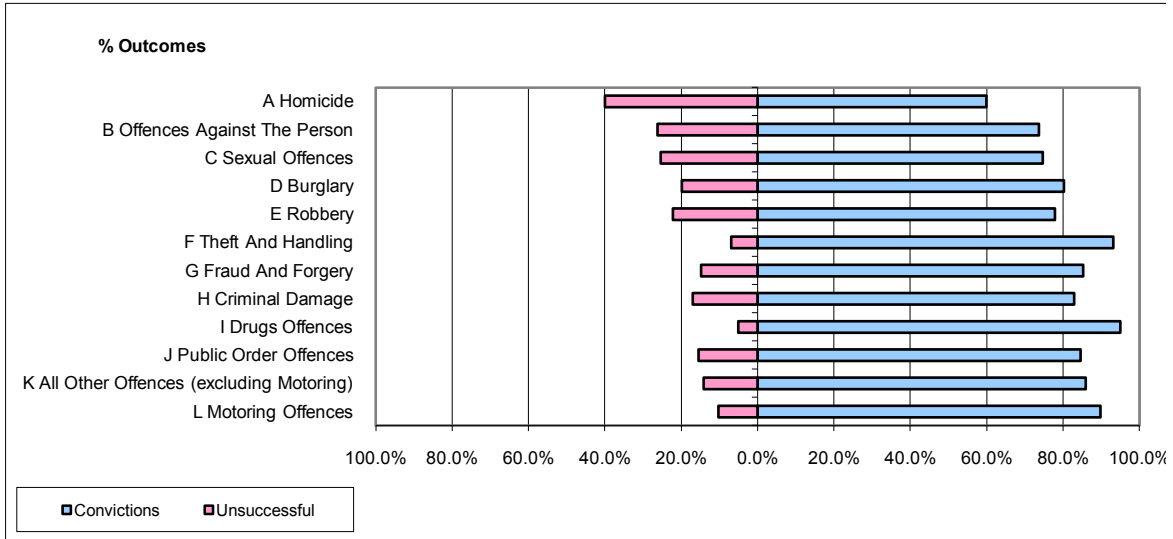


**CPS OUTCOMES BY PRINCIPAL OFFENCE CATEGORY**

**July 2009**

**P41-WestMidlands**



	Convictions		Unsuccessful	
	Number of Defendants	%	Number of Defendants	%
<b>A Homicide</b>	3	60.0%	2	40.0%
<b>B Offences Against The Person</b>	571	73.8%	203	26.2%
<b>C Sexual Offences</b>	53	74.6%	18	25.4%
<b>D Burglary</b>	138	80.2%	34	19.8%
<b>E Robbery</b>	81	77.9%	23	22.1%
<b>F Theft And Handling</b>	637	93.1%	47	6.9%
<b>G Fraud And Forgery</b>	52	85.2%	9	14.8%
<b>H Criminal Damage</b>	195	83.0%	40	17.0%
<b>I Drugs Offences</b>	301	95.0%	16	5.0%
<b>J Public Order Offences</b>	356	84.6%	65	15.4%
<b>K All Other Offences (excluding Motoring)</b>	196	86.0%	32	14.0%
<b>L Motoring Offences</b>	1,551	89.8%	176	10.2%
<b>Admin Finalisations</b>	0	0.0%	50	100.0%
<b>TOTAL</b>	<b>4,134</b>	<b>85.3%</b>	<b>715</b>	<b>14.7%</b>