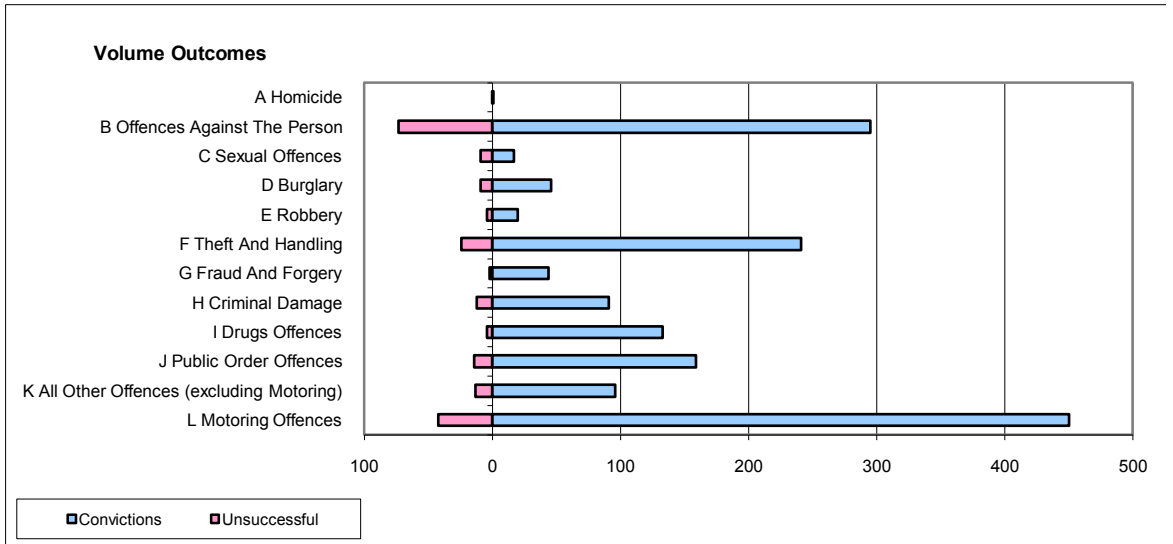
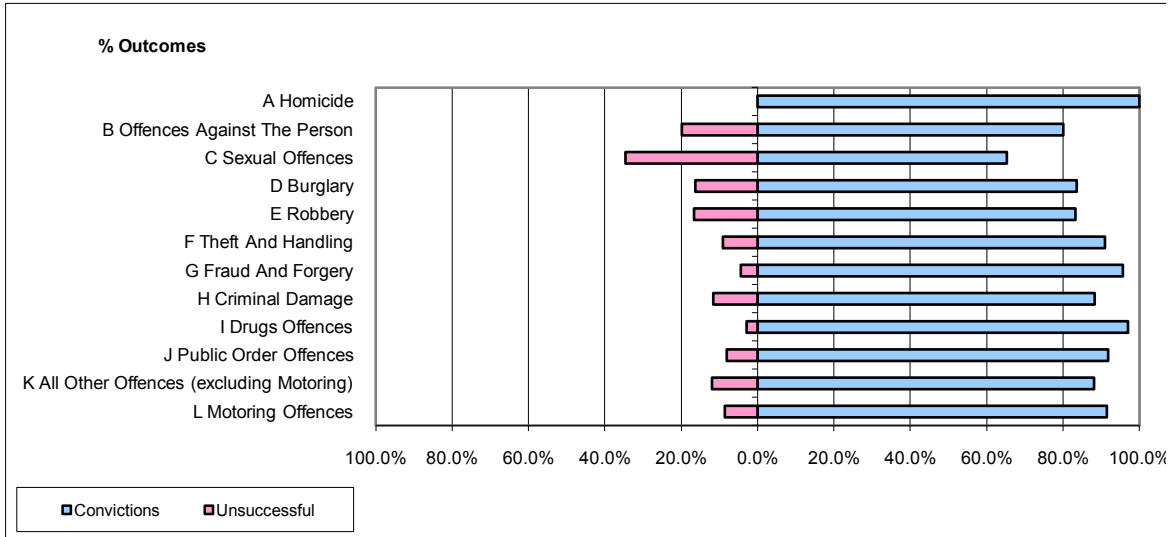


CPS OUTCOMES BY PRINCIPAL OFFENCE CATEGORY

July 2009

P37-Sussex



	Convictions		Unsuccessful	
	Number of Defendants	%	Number of Defendants	%
A Homicide	1	100.0%	0	0.0%
B Offences Against The Person	295	80.2%	73	19.8%
C Sexual Offences	17	65.4%	9	34.6%
D Burglary	46	83.6%	9	16.4%
E Robbery	20	83.3%	4	16.7%
F Theft And Handling	241	90.9%	24	9.1%
G Fraud And Forgery	44	95.7%	2	4.3%
H Criminal Damage	91	88.3%	12	11.7%
I Drugs Offences	133	97.1%	4	2.9%
J Public Order Offences	159	91.9%	14	8.1%
K All Other Offences (excluding Motoring)	96	88.1%	13	11.9%
L Motoring Offences	450	91.5%	42	8.5%
Admin Finalisations	0	0.0%	18	100.0%
TOTAL	1,593	87.7%	224	12.3%