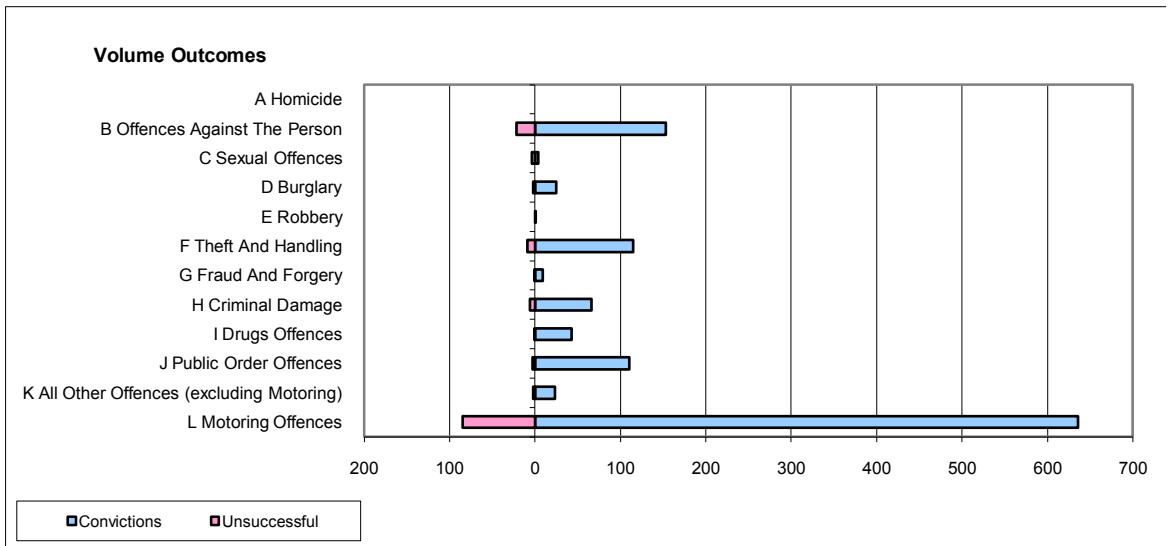
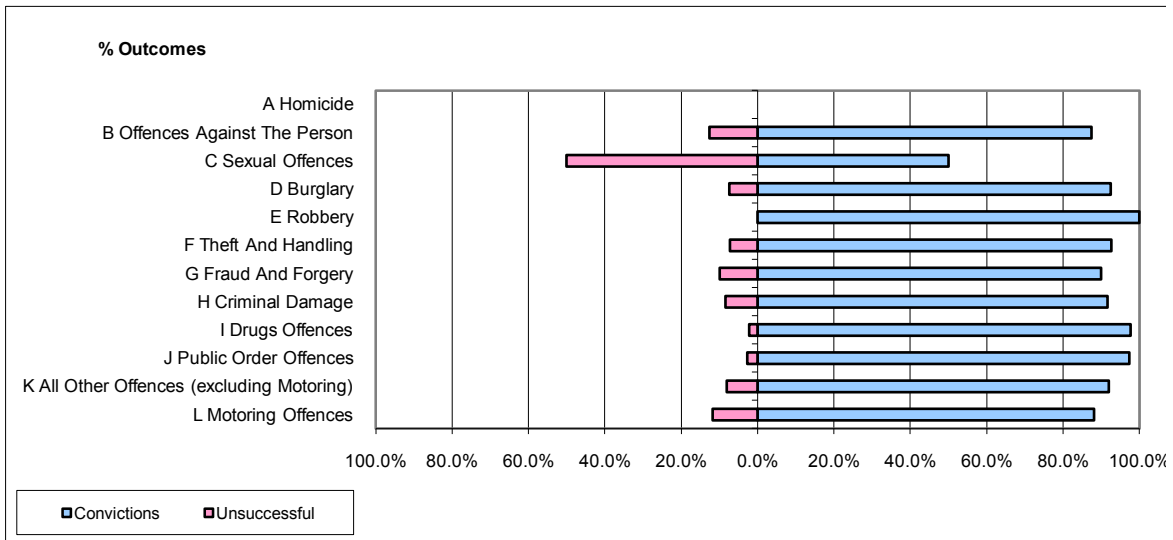


CPS OUTCOMES BY PRINCIPAL OFFENCE CATEGORY

July 2009

P35-Suffolk



	Convictions		Unsuccessful	
	Number of Defendants	%	Number of Defendants	%
A Homicide	0	0	0	0
B Offences Against The Person	153	87.4%	22	12.6%
C Sexual Offences	4	50.0%	4	50.0%
D Burglary	25	92.6%	2	7.4%
E Robbery	1	100.0%	0	0.0%
F Theft And Handling	115	92.7%	9	7.3%
G Fraud And Forgery	9	90.0%	1	10.0%
H Criminal Damage	66	91.7%	6	8.3%
I Drugs Offences	43	97.7%	1	2.3%
J Public Order Offences	110	97.3%	3	2.7%
K All Other Offences (excluding Motoring)	23	92.0%	2	8.0%
L Motoring Offences	636	88.2%	85	11.8%
Admin Finalisations	0	0.0%	16	100.0%
TOTAL	1,185	88.7%	151	11.3%