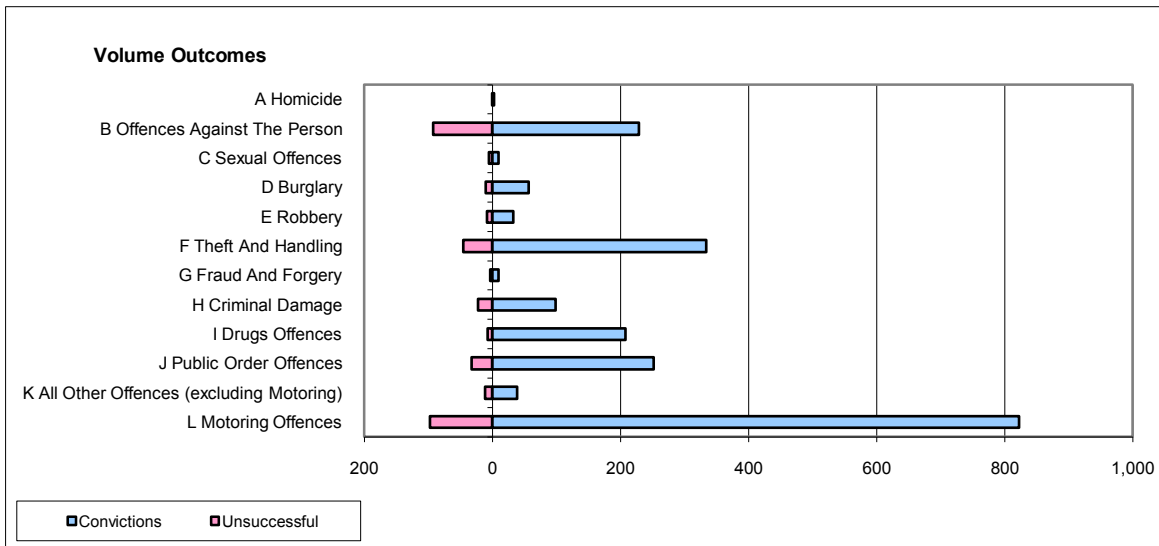
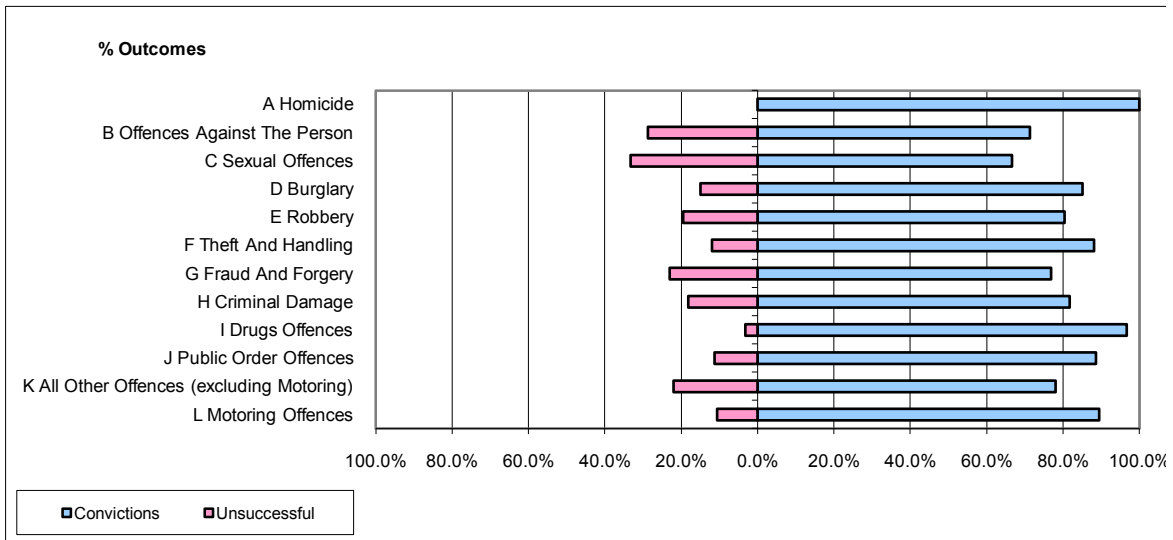


CPS OUTCOMES BY PRINCIPAL OFFENCE CATEGORY

July 2009

P32-SouthWales



	Convictions		Unsuccessful	
	Number of Defendants	%	Number of Defendants	%
A Homicide	3	100.0%	0	0.0%
B Offences Against The Person	229	71.3%	92	28.7%
C Sexual Offences	10	66.7%	5	33.3%
D Burglary	57	85.1%	10	14.9%
E Robbery	33	80.5%	8	19.5%
F Theft And Handling	334	88.1%	45	11.9%
G Fraud And Forgery	10	76.9%	3	23.1%
H Criminal Damage	99	81.8%	22	18.2%
I Drugs Offences	208	96.7%	7	3.3%
J Public Order Offences	252	88.7%	32	11.3%
K All Other Offences (excluding Motoring)	39	78.0%	11	22.0%
L Motoring Offences	822	89.4%	97	10.6%
Admin Finalisations	0	0.0%	47	100.0%
TOTAL	2,096	84.7%	379	15.3%