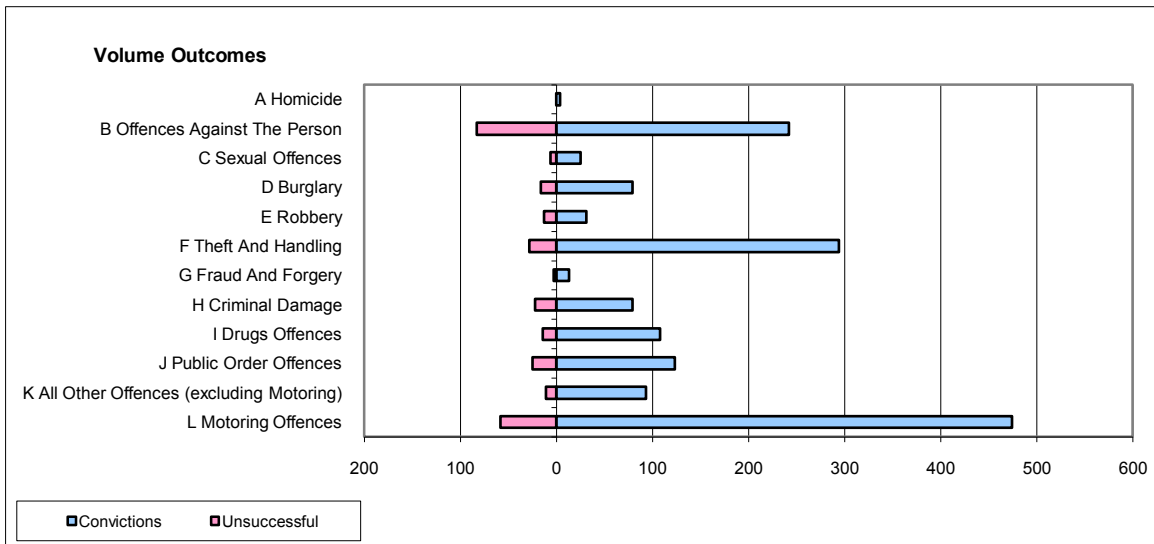
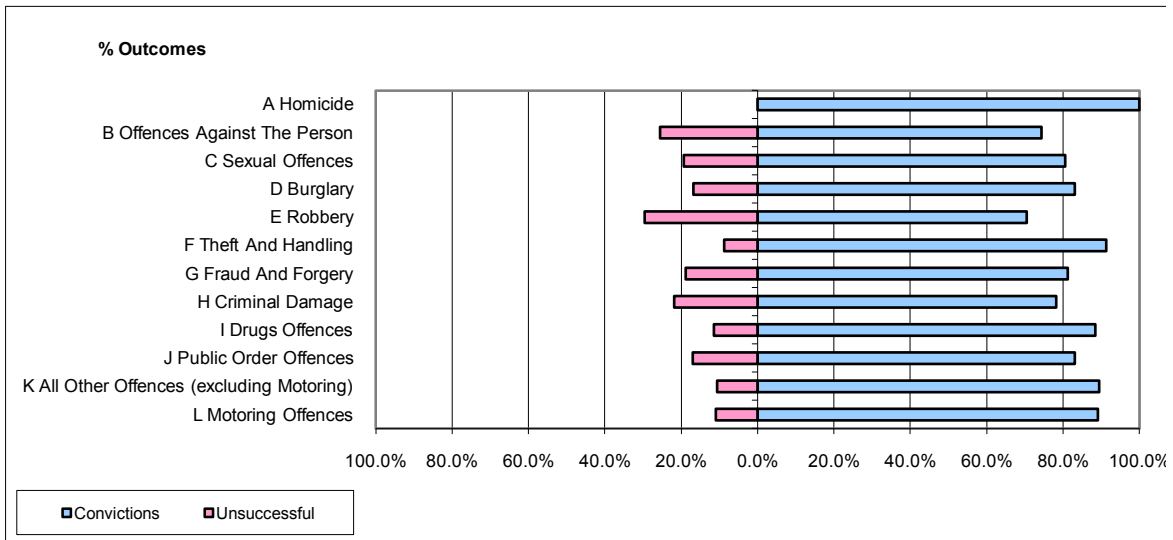


CPS OUTCOMES BY PRINCIPAL OFFENCE CATEGORY

July 2009

P31-Nottinghamshire



	Convictions		Unsuccessful	
	Number of Defendants	%	Number of Defendants	%
A Homicide	4	100.0%	0	0.0%
B Offences Against The Person	242	74.5%	83	25.5%
C Sexual Offences	25	80.6%	6	19.4%
D Burglary	79	83.2%	16	16.8%
E Robbery	31	70.5%	13	29.5%
F Theft And Handling	294	91.3%	28	8.7%
G Fraud And Forgery	13	81.3%	3	18.8%
H Criminal Damage	79	78.2%	22	21.8%
I Drugs Offences	108	88.5%	14	11.5%
J Public Order Offences	123	83.1%	25	16.9%
K All Other Offences (excluding Motoring)	93	89.4%	11	10.6%
L Motoring Offences	474	89.1%	58	10.9%
Admin Finalisations	0	0.0%	15	100.0%
TOTAL	1,565	84.2%	294	15.8%