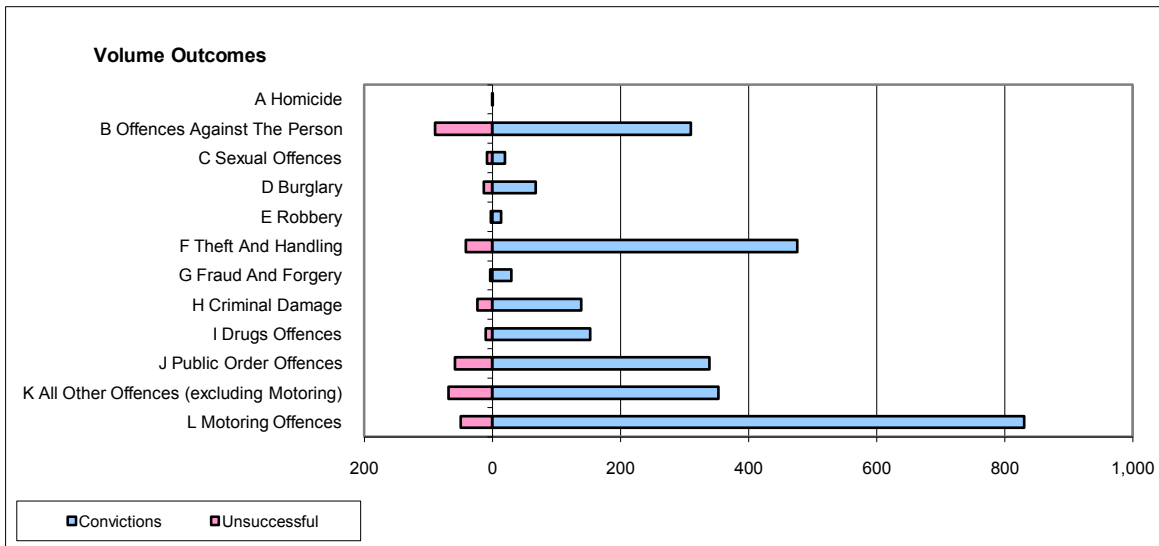
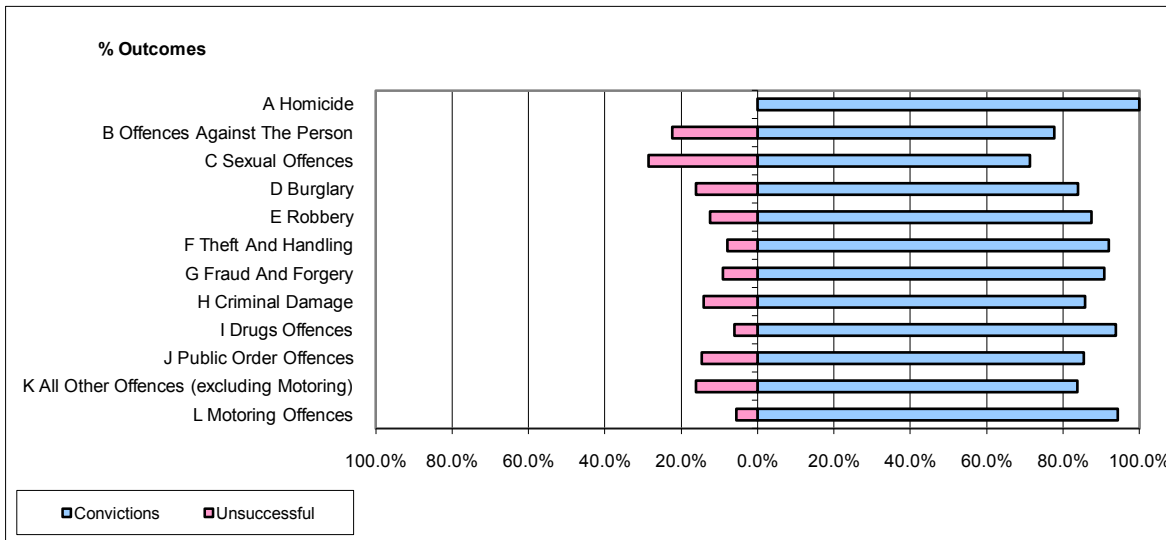


**CPS OUTCOMES BY PRINCIPAL OFFENCE CATEGORY**

**July 2009**

**P28-Northumbria**



	Convictions		Unsuccessful	
	Number of Defendants	%	Number of Defendants	%
<b>A Homicide</b>	1	100.0%	0	0.0%
<b>B Offences Against The Person</b>	310	77.7%	89	22.3%
<b>C Sexual Offences</b>	20	71.4%	8	28.6%
<b>D Burglary</b>	68	84.0%	13	16.0%
<b>E Robbery</b>	14	87.5%	2	12.5%
<b>F Theft And Handling</b>	476	92.1%	41	7.9%
<b>G Fraud And Forgery</b>	30	90.9%	3	9.1%
<b>H Criminal Damage</b>	139	85.8%	23	14.2%
<b>I Drugs Offences</b>	153	93.9%	10	6.1%
<b>J Public Order Offences</b>	339	85.4%	58	14.6%
<b>K All Other Offences (excluding Motoring)</b>	353	83.8%	68	16.2%
<b>L Motoring Offences</b>	830	94.4%	49	5.6%
<b>Admin Finalisations</b>	0	0.0%	13	100.0%
<b>TOTAL</b>	<b>2,733</b>	<b>87.9%</b>	<b>377</b>	<b>12.1%</b>