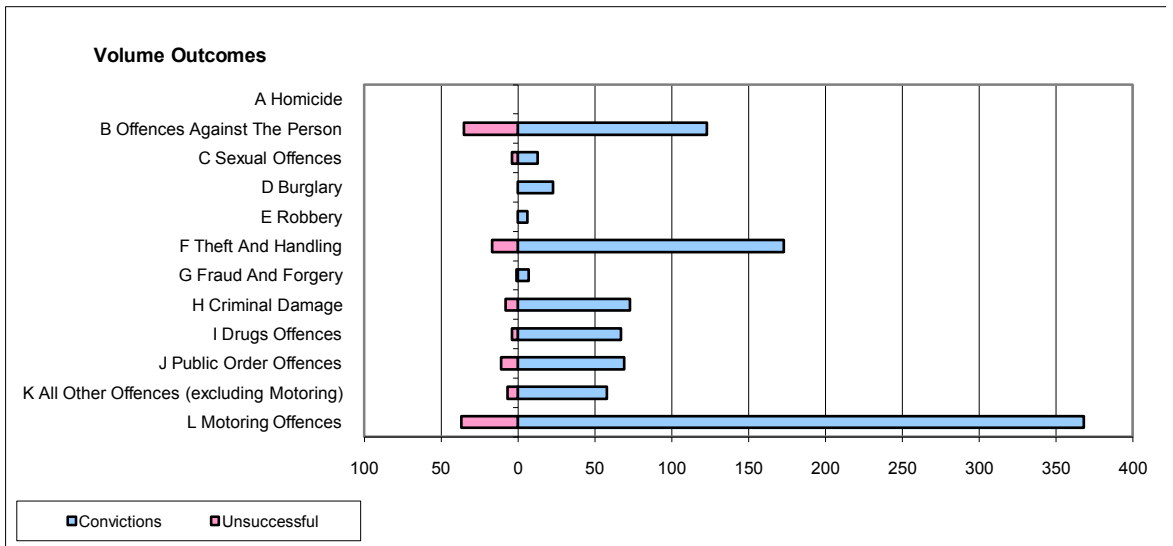
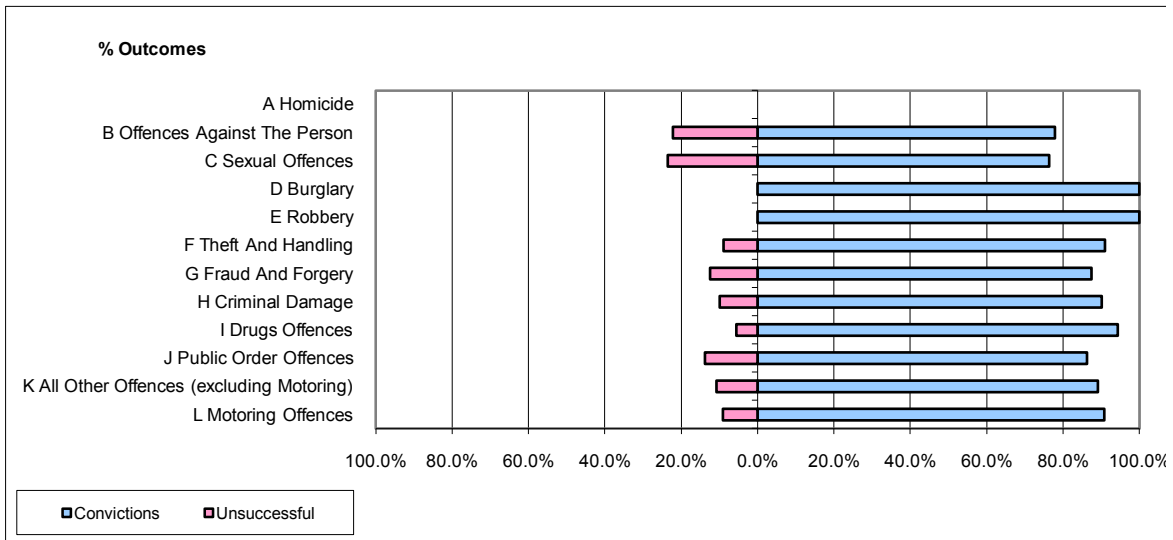


CPS OUTCOMES BY PRINCIPAL OFFENCE CATEGORY

July 2009

P26-Norfolk



	Convictions		Unsuccessful	
	Number of Defendants	%	Number of Defendants	%
A Homicide	0	0	0	0
B Offences Against The Person	123	77.8%	35	22.2%
C Sexual Offences	13	76.5%	4	23.5%
D Burglary	23	100.0%	0	0.0%
E Robbery	6	100.0%	0	0.0%
F Theft And Handling	173	91.1%	17	8.9%
G Fraud And Forgery	7	87.5%	1	12.5%
H Criminal Damage	73	90.1%	8	9.9%
I Drugs Offences	67	94.4%	4	5.6%
J Public Order Offences	69	86.3%	11	13.8%
K All Other Offences (excluding Motoring)	58	89.2%	7	10.8%
L Motoring Offences	368	90.9%	37	9.1%
Admin Finalisations	0	0.0%	12	100.0%
TOTAL	980	87.8%	136	12.2%