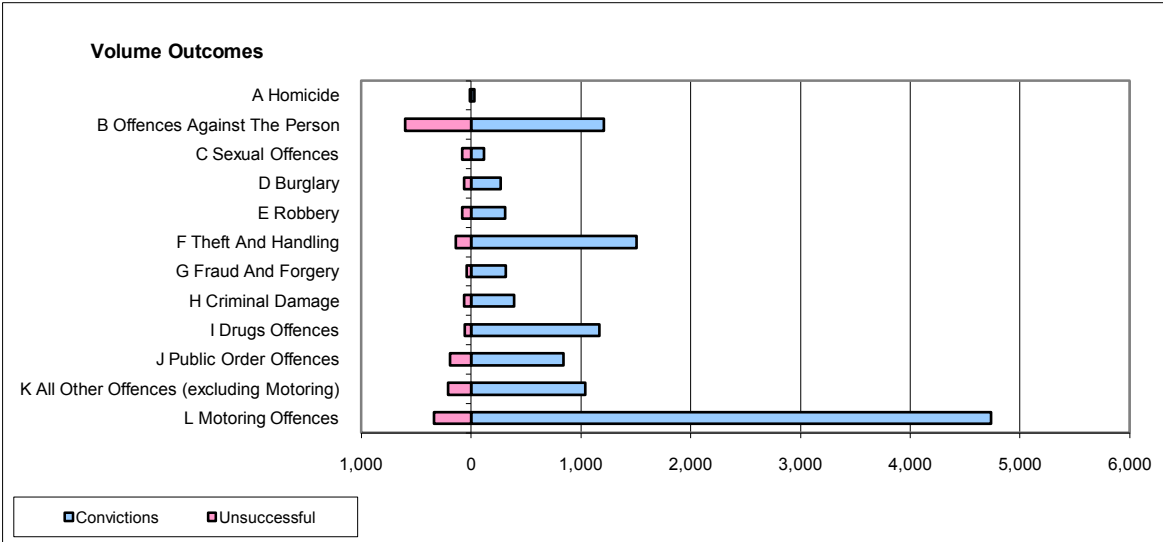
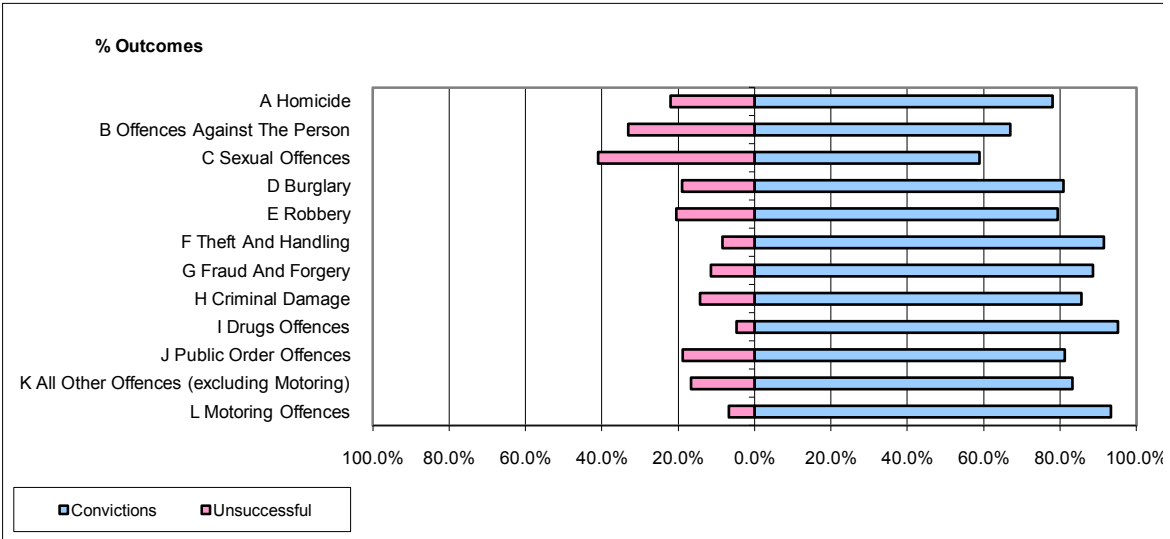


CPS OUTCOMES BY PRINCIPAL OFFENCE CATEGORY

July 2009

P25-Metropolitan&City



	Convictions		Unsuccessful	
	Number of Defendants	%	Number of Defendants	%
A Homicide	32	78.0%	9	22.0%
B Offences Against The Person	1,212	67.0%	598	33.0%
C Sexual Offences	115	59.0%	80	41.0%
D Burglary	268	81.0%	63	19.0%
E Robbery	313	79.4%	81	20.6%
F Theft And Handling	1,509	91.6%	139	8.4%
G Fraud And Forgery	318	88.6%	41	11.4%
H Criminal Damage	395	85.7%	66	14.3%
I Drugs Offences	1,171	95.3%	58	4.7%
J Public Order Offences	839	81.2%	194	18.8%
K All Other Offences (excluding Motoring)	1,040	83.3%	208	16.7%
L Motoring Offences	4,737	93.3%	339	6.7%
Admin Finalisations	0	0.0%	307	100.0%
TOTAL	11,949	84.6%	2,183	15.4%