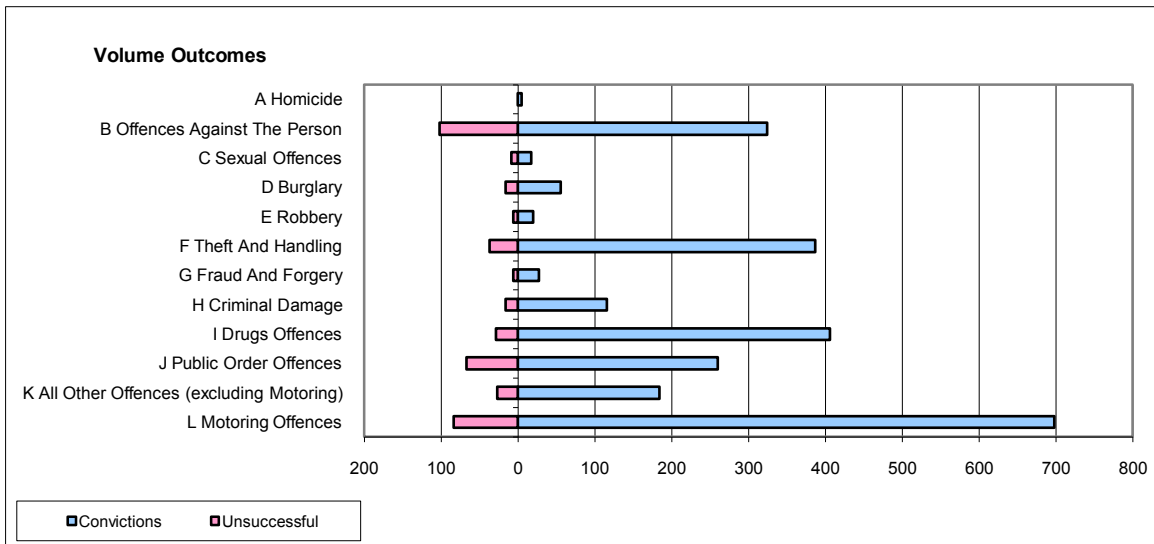
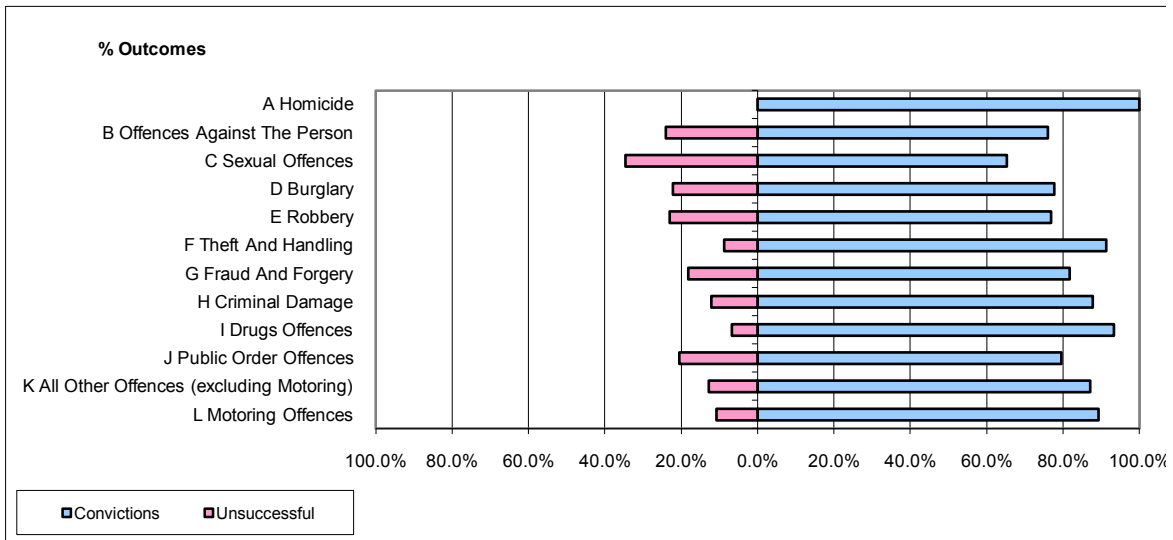


**CPS OUTCOMES BY PRINCIPAL OFFENCE CATEGORY**

**July 2009**

**P24-Merseyside**



	Convictions		Unsuccessful	
	Number of Defendants	%	Number of Defendants	%
<b>A Homicide</b>	5	100.0%	0	0.0%
<b>B Offences Against The Person</b>	324	76.1%	102	23.9%
<b>C Sexual Offences</b>	17	65.4%	9	34.6%
<b>D Burglary</b>	56	77.8%	16	22.2%
<b>E Robbery</b>	20	76.9%	6	23.1%
<b>F Theft And Handling</b>	387	91.3%	37	8.7%
<b>G Fraud And Forgery</b>	27	81.8%	6	18.2%
<b>H Criminal Damage</b>	116	87.9%	16	12.1%
<b>I Drugs Offences</b>	406	93.3%	29	6.7%
<b>J Public Order Offences</b>	260	79.5%	67	20.5%
<b>K All Other Offences (excluding Motoring)</b>	184	87.2%	27	12.8%
<b>L Motoring Offences</b>	698	89.3%	84	10.7%
<b>Admin Finalisations</b>	0	0.0%	23	100.0%
<b>TOTAL</b>	<b>2,500</b>	<b>85.6%</b>	<b>422</b>	<b>14.4%</b>