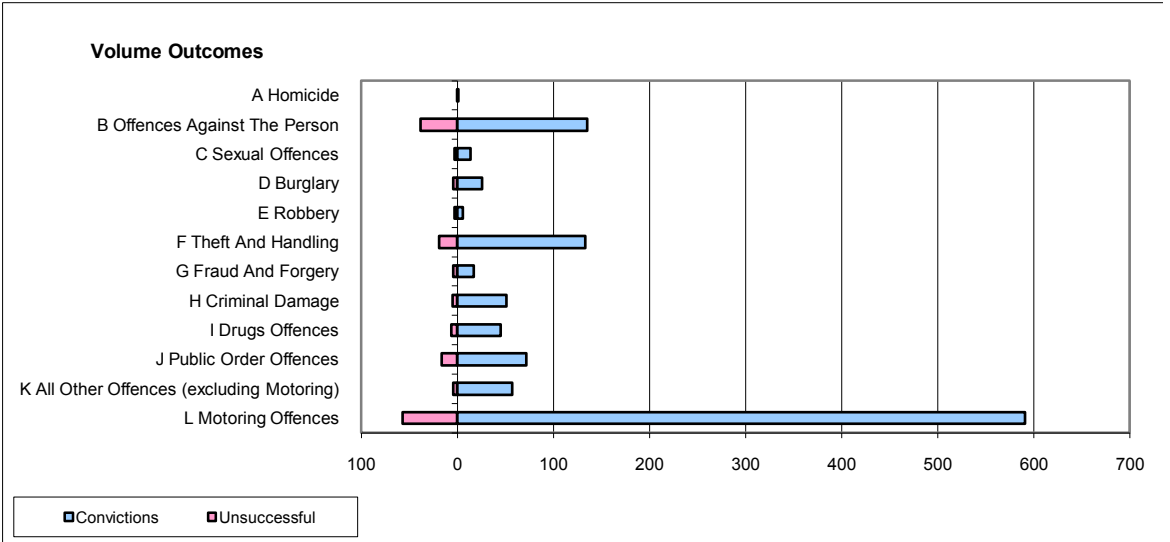
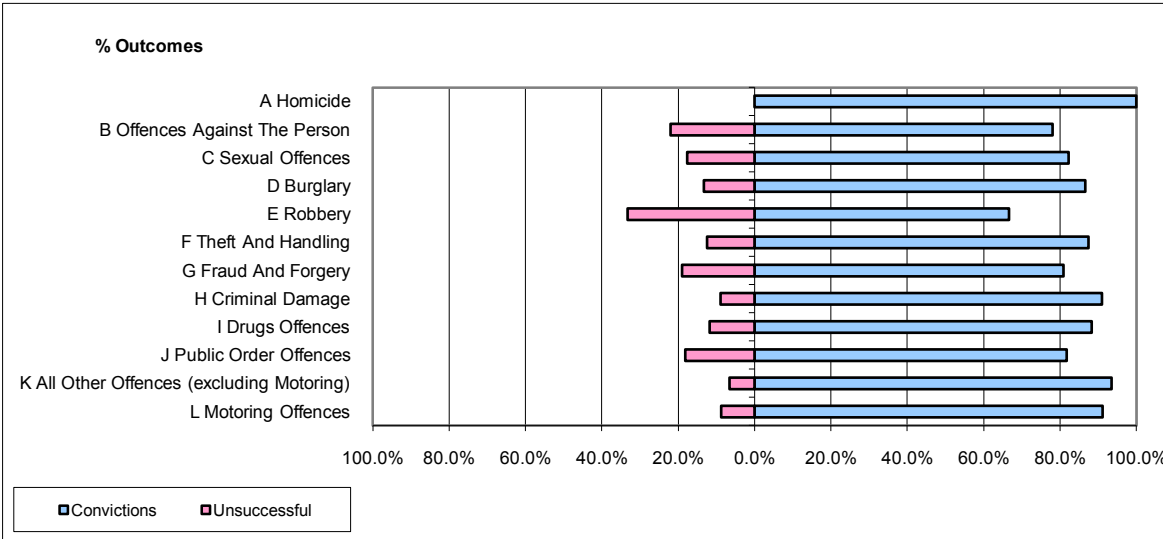


**CPS OUTCOMES BY PRINCIPAL OFFENCE CATEGORY**

**July 2009**

**P22-Leicestershire**



	Convictions		Unsuccessful	
	Number of Defendants	%	Number of Defendants	%
<b>A Homicide</b>	1	100.0%	0	0.0%
<b>B Offences Against The Person</b>	135	78.0%	38	22.0%
<b>C Sexual Offences</b>	14	82.4%	3	17.6%
<b>D Burglary</b>	26	86.7%	4	13.3%
<b>E Robbery</b>	6	66.7%	3	33.3%
<b>F Theft And Handling</b>	133	87.5%	19	12.5%
<b>G Fraud And Forgery</b>	17	81.0%	4	19.0%
<b>H Criminal Damage</b>	51	91.1%	5	8.9%
<b>I Drugs Offences</b>	45	88.2%	6	11.8%
<b>J Public Order Offences</b>	72	81.8%	16	18.2%
<b>K All Other Offences (excluding Motoring)</b>	57	93.4%	4	6.6%
<b>L Motoring Offences</b>	591	91.2%	57	8.8%
<b>Admin Finalisations</b>	0	0.0%	23	100.0%
<b>TOTAL</b>	<b>1,148</b>	<b>86.3%</b>	<b>182</b>	<b>13.7%</b>