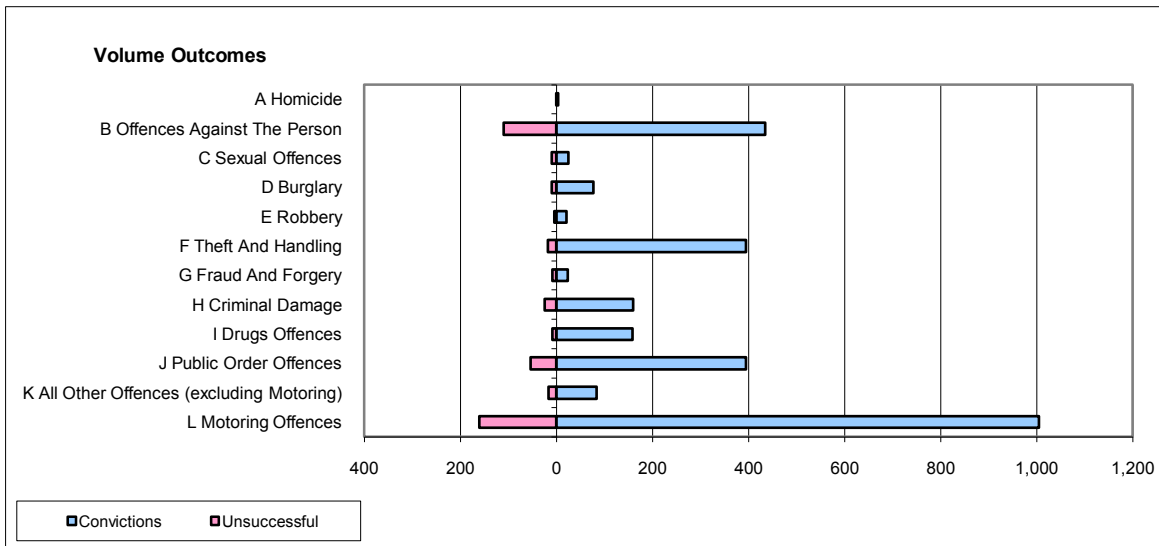
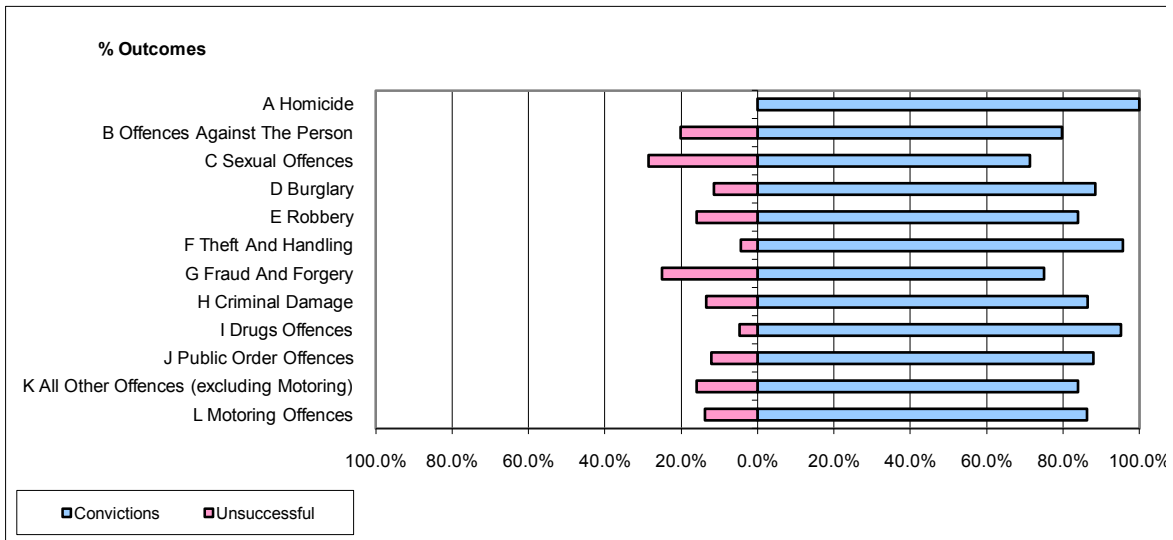


CPS OUTCOMES BY PRINCIPAL OFFENCE CATEGORY

July 2009

P21-Lancashire



	Convictions		Unsuccessful	
	Number of Defendants	%	Number of Defendants	%
A Homicide	3	100.0%	0	0.0%
B Offences Against The Person	435	79.8%	110	20.2%
C Sexual Offences	25	71.4%	10	28.6%
D Burglary	77	88.5%	10	11.5%
E Robbery	21	84.0%	4	16.0%
F Theft And Handling	394	95.6%	18	4.4%
G Fraud And Forgery	24	75.0%	8	25.0%
H Criminal Damage	160	86.5%	25	13.5%
I Drugs Offences	159	95.2%	8	4.8%
J Public Order Offences	394	87.9%	54	12.1%
K All Other Offences (excluding Motoring)	84	84.0%	16	16.0%
L Motoring Offences	1,005	86.3%	160	13.7%
Admin Finalisations	0	0.0%	25	100.0%
TOTAL	2,781	86.1%	448	13.9%