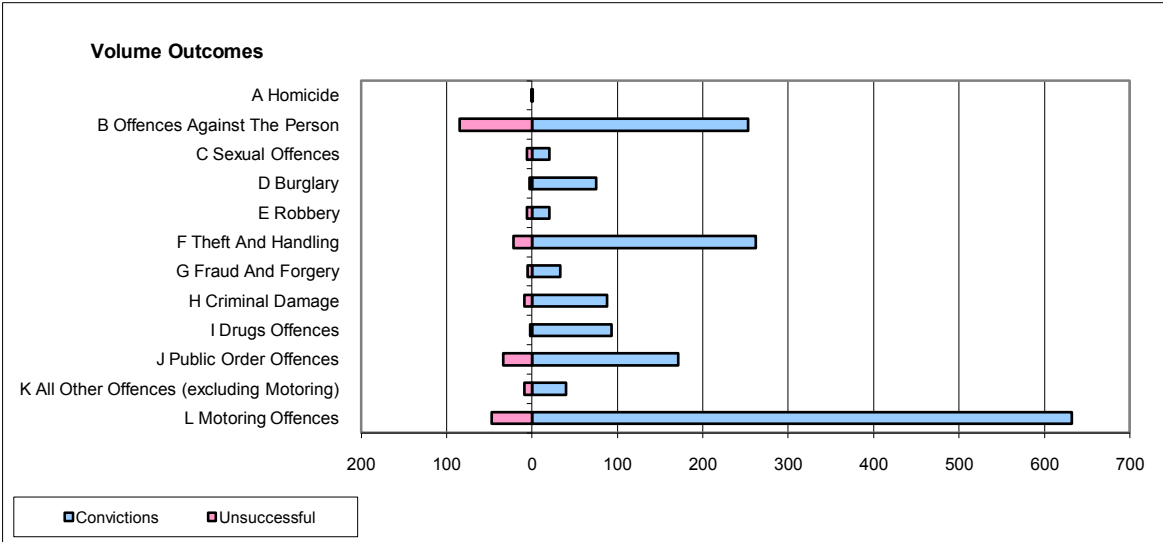
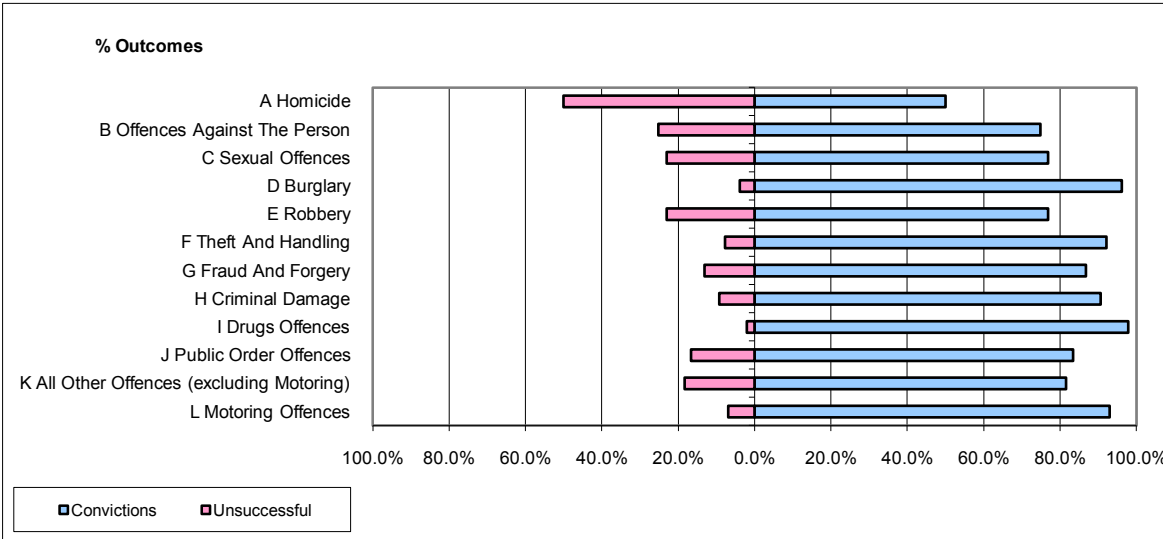


**CPS OUTCOMES BY PRINCIPAL OFFENCE CATEGORY**

**July 2009**

**P20-Kent**



	Convictions		Unsuccessful	
	Number of Defendants	%	Number of Defendants	%
<b>A Homicide</b>	<b>1</b>	<b>50.0%</b>	<b>1</b>	<b>50.0%</b>
<b>B Offences Against The Person</b>	<b>253</b>	<b>74.9%</b>	<b>85</b>	<b>25.1%</b>
<b>C Sexual Offences</b>	<b>20</b>	<b>76.9%</b>	<b>6</b>	<b>23.1%</b>
<b>D Burglary</b>	<b>75</b>	<b>96.2%</b>	<b>3</b>	<b>3.8%</b>
<b>E Robbery</b>	<b>20</b>	<b>76.9%</b>	<b>6</b>	<b>23.1%</b>
<b>F Theft And Handling</b>	<b>262</b>	<b>92.3%</b>	<b>22</b>	<b>7.7%</b>
<b>G Fraud And Forgery</b>	<b>33</b>	<b>86.8%</b>	<b>5</b>	<b>13.2%</b>
<b>H Criminal Damage</b>	<b>88</b>	<b>90.7%</b>	<b>9</b>	<b>9.3%</b>
<b>I Drugs Offences</b>	<b>93</b>	<b>97.9%</b>	<b>2</b>	<b>2.1%</b>
<b>J Public Order Offences</b>	<b>171</b>	<b>83.4%</b>	<b>34</b>	<b>16.6%</b>
<b>K All Other Offences (excluding Motoring)</b>	<b>40</b>	<b>81.6%</b>	<b>9</b>	<b>18.4%</b>
<b>L Motoring Offences</b>	<b>632</b>	<b>93.1%</b>	<b>47</b>	<b>6.9%</b>
<b>Admin Finalisations</b>	<b>0</b>	<b>0.0%</b>	<b>18</b>	<b>100.0%</b>
<b>TOTAL</b>	<b>1,688</b>	<b>87.2%</b>	<b>247</b>	<b>12.8%</b>