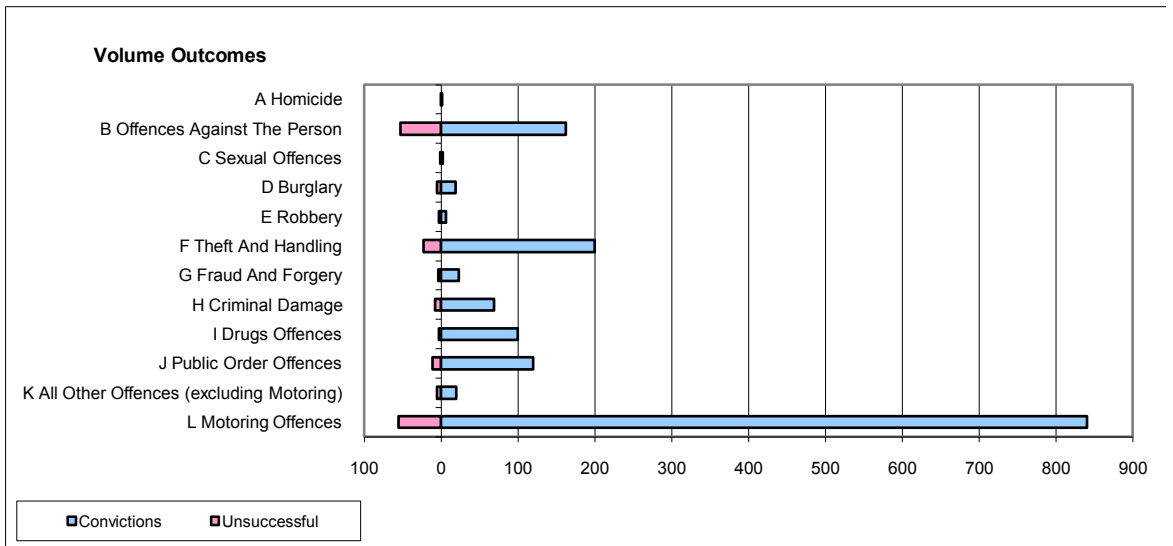
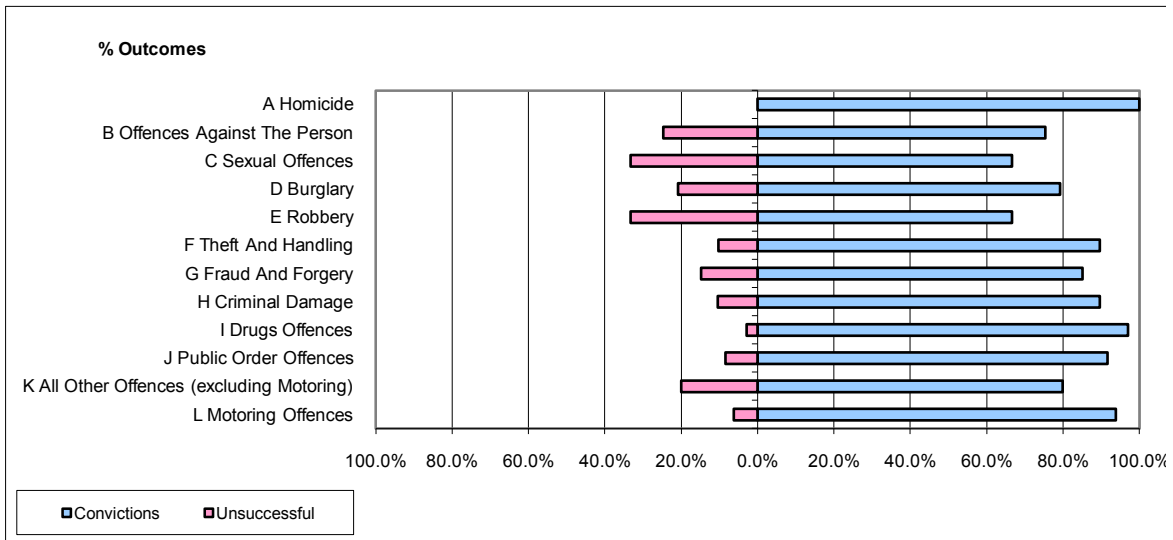


CPS OUTCOMES BY PRINCIPAL OFFENCE CATEGORY

July 2009

P18-Hertfordshire



	Convictions		Unsuccessful	
	Number of Defendants	%	Number of Defendants	%
A Homicide	1	100.0%	0	0.0%
B Offences Against The Person	162	75.3%	53	24.7%
C Sexual Offences	2	66.7%	1	33.3%
D Burglary	19	79.2%	5	20.8%
E Robbery	6	66.7%	3	33.3%
F Theft And Handling	200	89.7%	23	10.3%
G Fraud And Forgery	23	85.2%	4	14.8%
H Criminal Damage	69	89.6%	8	10.4%
I Drugs Offences	100	97.1%	3	2.9%
J Public Order Offences	120	91.6%	11	8.4%
K All Other Offences (excluding Motoring)	20	80.0%	5	20.0%
L Motoring Offences	840	93.9%	55	6.1%
Admin Finalisations	0	0.0%	21	100.0%
TOTAL	1,562	89.1%	192	10.9%