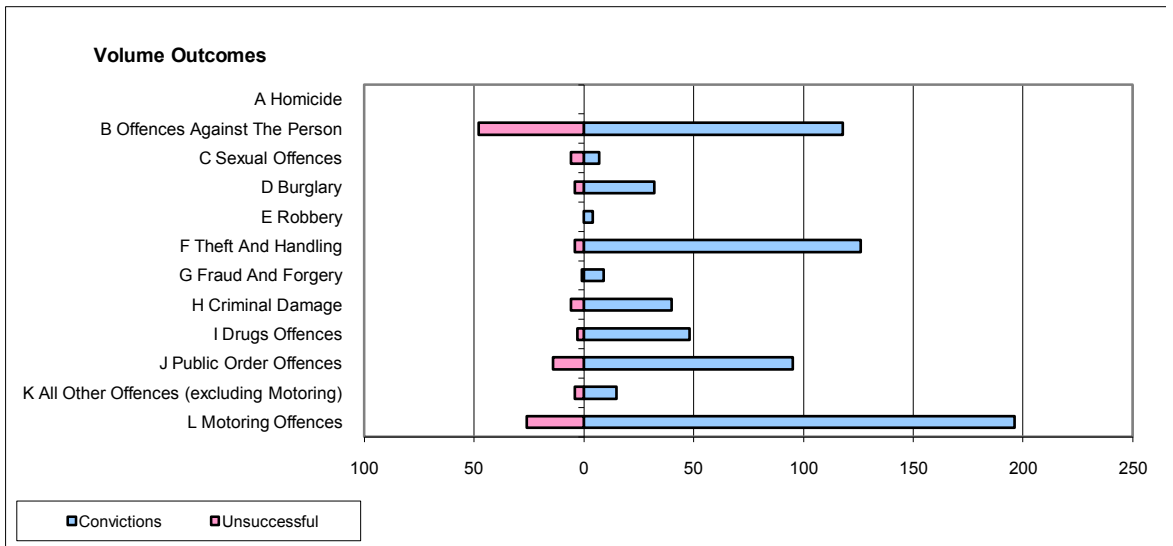
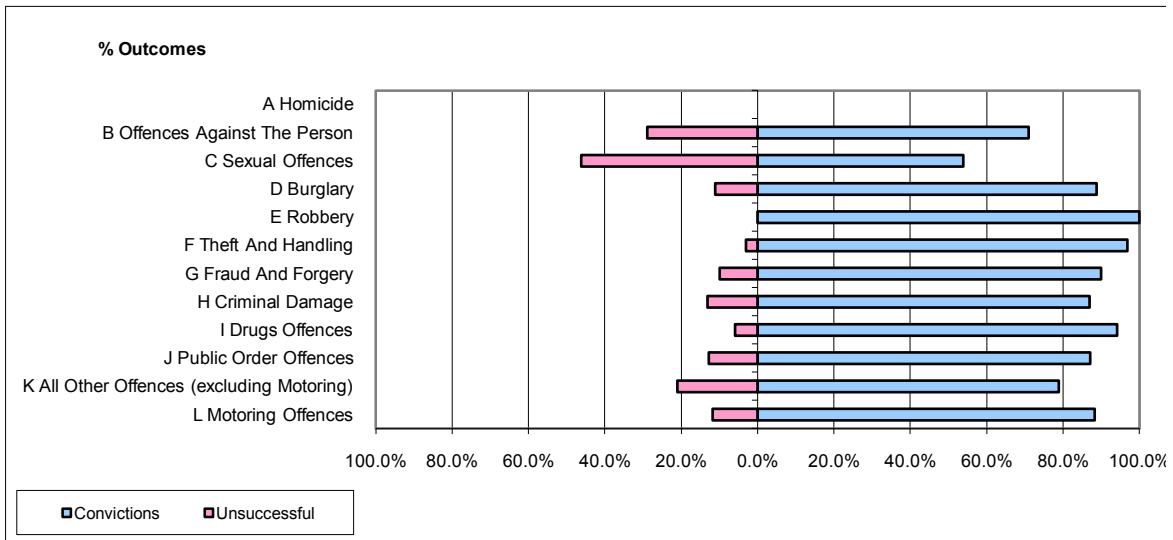


**CPS OUTCOMES BY PRINCIPAL OFFENCE CATEGORY**

**July 2009**

**P16-Gwent**



	Convictions		Unsuccessful	
	Number of Defendants	%	Number of Defendants	%
<b>A Homicide</b>	0	0	0	0
<b>B Offences Against The Person</b>	118	71.1%	48	28.9%
<b>C Sexual Offences</b>	7	53.8%	6	46.2%
<b>D Burglary</b>	32	88.9%	4	11.1%
<b>E Robbery</b>	4	100.0%	0	0.0%
<b>F Theft And Handling</b>	126	96.9%	4	3.1%
<b>G Fraud And Forgery</b>	9	90.0%	1	10.0%
<b>H Criminal Damage</b>	40	87.0%	6	13.0%
<b>I Drugs Offences</b>	48	94.1%	3	5.9%
<b>J Public Order Offences</b>	95	87.2%	14	12.8%
<b>K All Other Offences (excluding Motoring)</b>	15	78.9%	4	21.1%
<b>L Motoring Offences</b>	196	88.3%	26	11.7%
<b>Admin Finalisations</b>	0	0.0%	8	100.0%
<b>TOTAL</b>	<b>690</b>	<b>84.8%</b>	<b>124</b>	<b>15.2%</b>