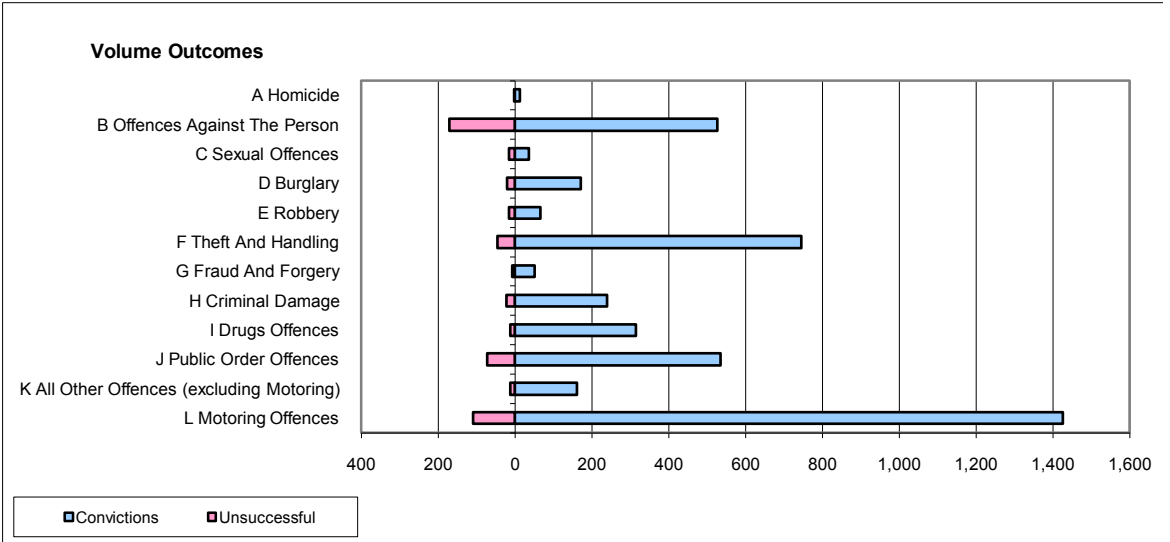
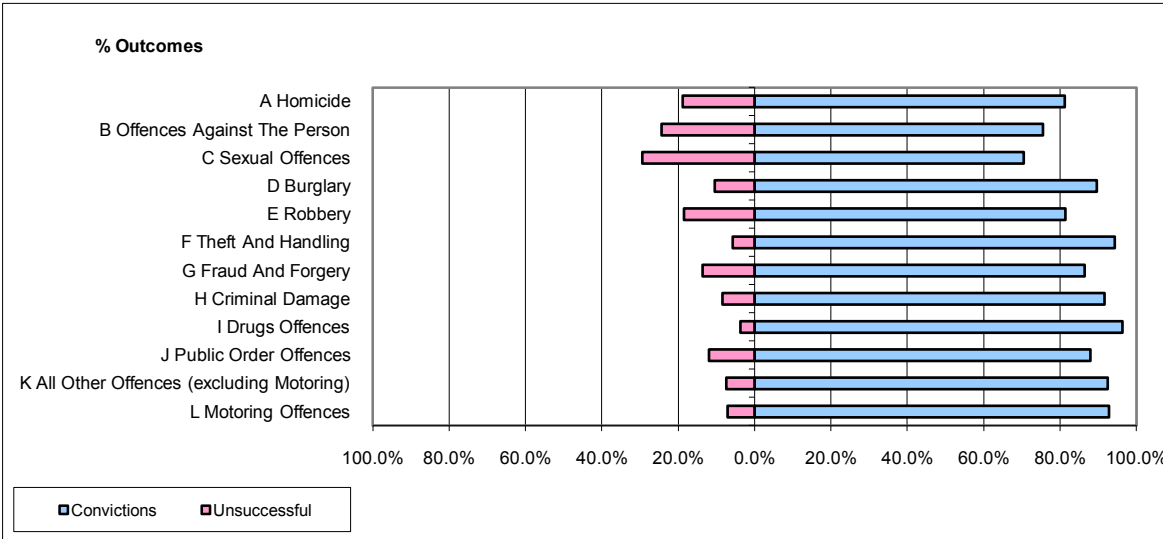


CPS OUTCOMES BY PRINCIPAL OFFENCE CATEGORY

July 2009

P15-GreaterManchester



	Convictions		Unsuccessful	
	Number of Defendants	%	Number of Defendants	%
A Homicide	13	81.3%	3	18.8%
B Offences Against The Person	527	75.6%	170	24.4%
C Sexual Offences	36	70.6%	15	29.4%
D Burglary	172	89.6%	20	10.4%
E Robbery	66	81.5%	15	18.5%
F Theft And Handling	745	94.3%	45	5.7%
G Fraud And Forgery	51	86.4%	8	13.6%
H Criminal Damage	240	91.6%	22	8.4%
I Drugs Offences	315	96.3%	12	3.7%
J Public Order Offences	535	88.0%	73	12.0%
K All Other Offences (excluding Motoring)	162	92.6%	13	7.4%
L Motoring Offences	1,425	92.9%	109	7.1%
Admin Finalisations	0	0.0%	60	100.0%
TOTAL	4,287	88.4%	565	11.6%