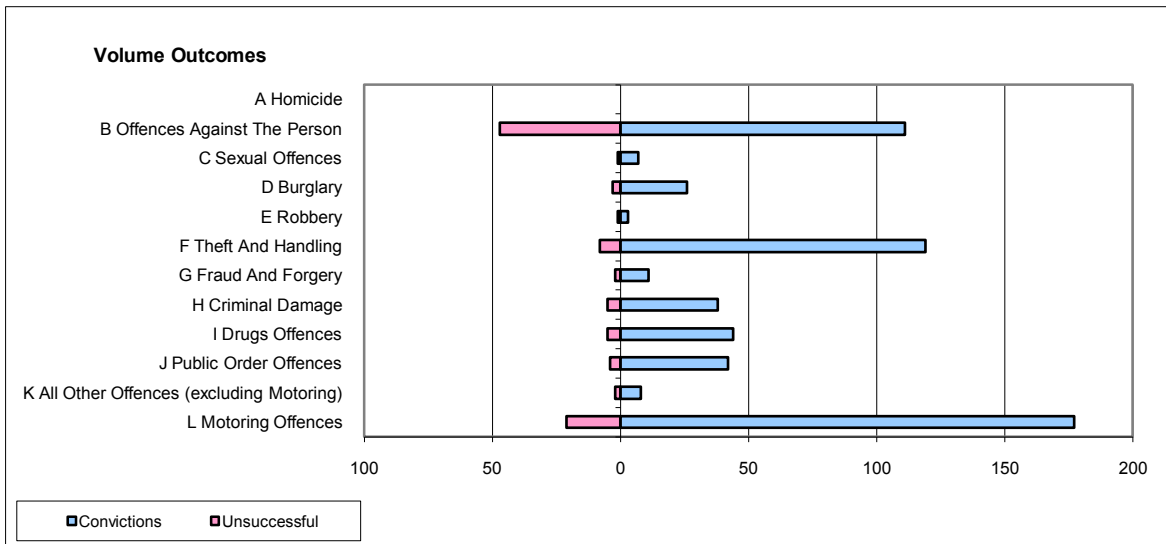
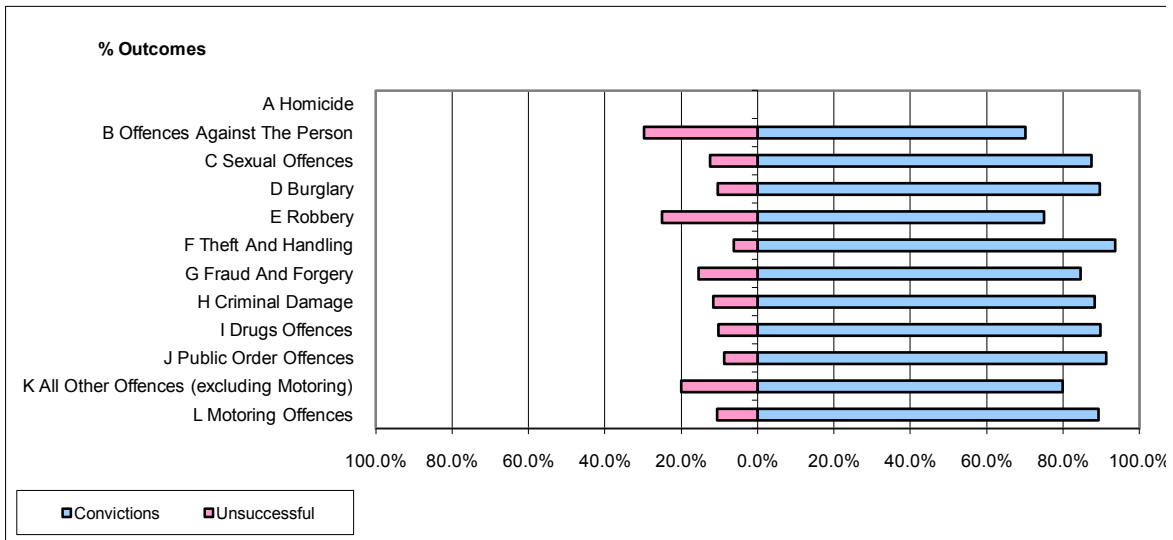


CPS OUTCOMES BY PRINCIPAL OFFENCE CATEGORY

July 2009

P14-Gloucestershire



	Convictions		Unsuccessful	
	Number of Defendants	%	Number of Defendants	%
A Homicide	0	0	0	0
B Offences Against The Person	111	70.3%	47	29.7%
C Sexual Offences	7	87.5%	1	12.5%
D Burglary	26	89.7%	3	10.3%
E Robbery	3	75.0%	1	25.0%
F Theft And Handling	119	93.7%	8	6.3%
G Fraud And Forgery	11	84.6%	2	15.4%
H Criminal Damage	38	88.4%	5	11.6%
I Drugs Offences	44	89.8%	5	10.2%
J Public Order Offences	42	91.3%	4	8.7%
K All Other Offences (excluding Motoring)	8	80.0%	2	20.0%
L Motoring Offences	177	89.4%	21	10.6%
Admin Finalisations	0	0.0%	6	100.0%
TOTAL	586	84.8%	105	15.2%