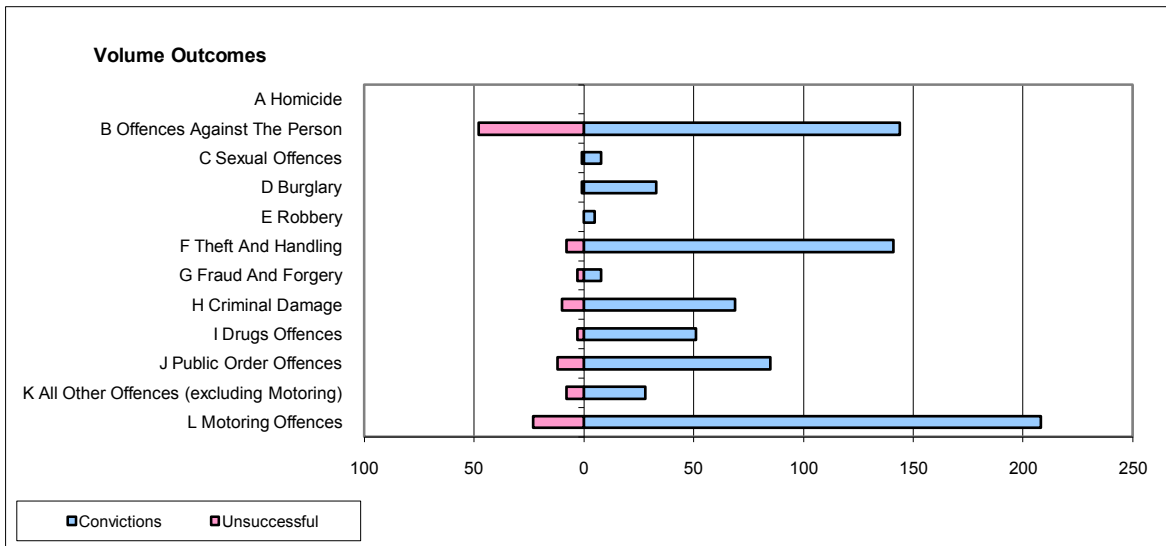
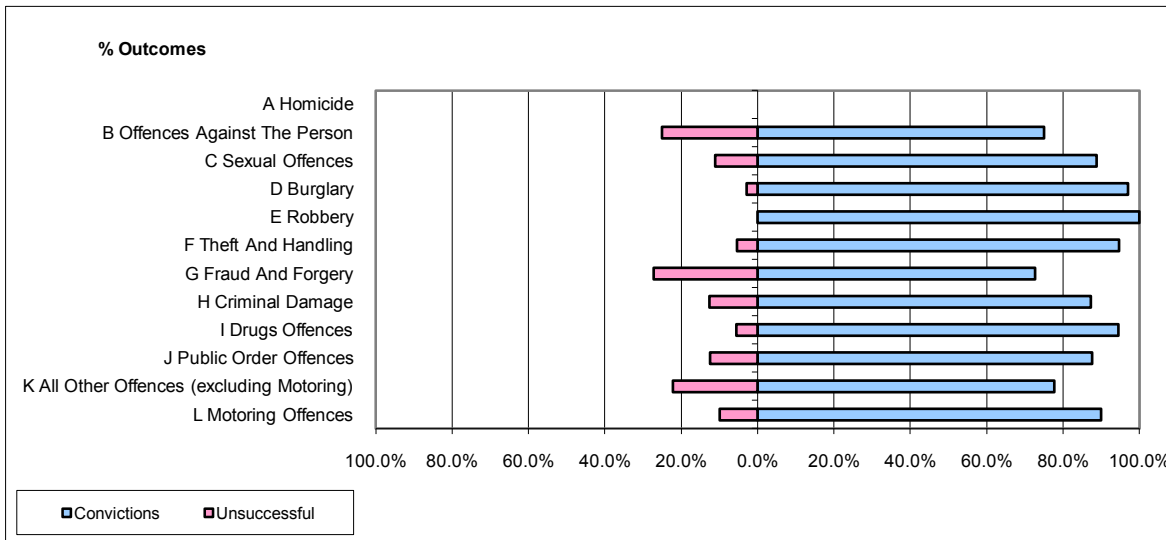


CPS OUTCOMES BY PRINCIPAL OFFENCE CATEGORY

July 2009

P11-Durham



	Convictions		Unsuccessful	
	Number of Defendants	%	Number of Defendants	%
A Homicide	0	0	0	0
B Offences Against The Person	144	75.0%	48	25.0%
C Sexual Offences	8	88.9%	1	11.1%
D Burglary	33	97.1%	1	2.9%
E Robbery	5	100.0%	0	0.0%
F Theft And Handling	141	94.6%	8	5.4%
G Fraud And Forgery	8	72.7%	3	27.3%
H Criminal Damage	69	87.3%	10	12.7%
I Drugs Offences	51	94.4%	3	5.6%
J Public Order Offences	85	87.6%	12	12.4%
K All Other Offences (excluding Motoring)	28	77.8%	8	22.2%
L Motoring Offences	208	90.0%	23	10.0%
Admin Finalisations	0	0.0%	4	100.0%
TOTAL	780	86.6%	121	13.4%