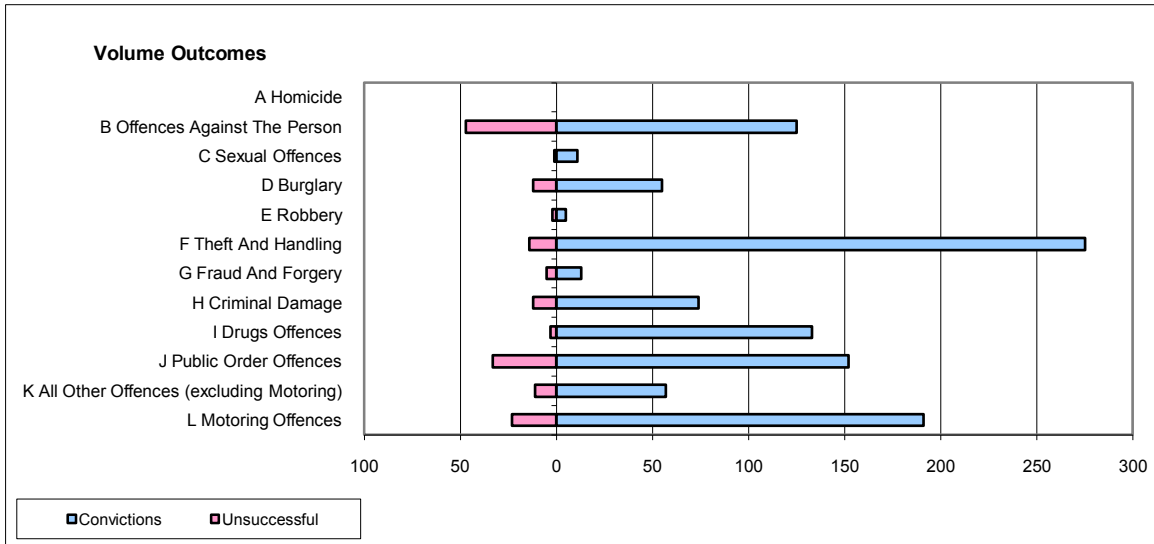
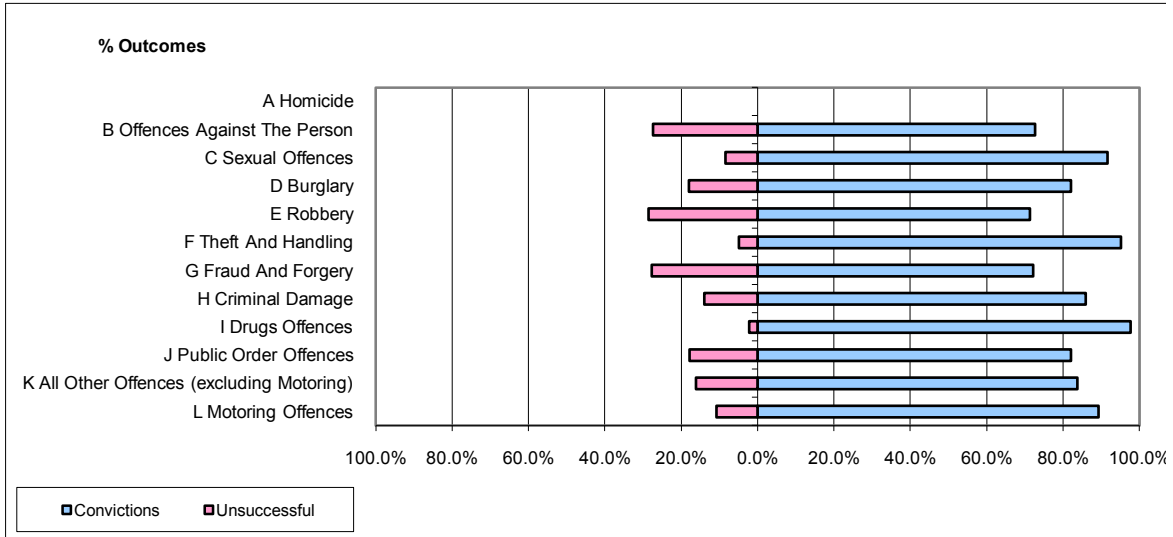


**CPS OUTCOMES BY PRINCIPAL OFFENCE CATEGORY**

**July 2009**

**P06-Cleveland**



	Convictions		Unsuccessful	
	Number of Defendants	%	Number of Defendants	%
<b>A Homicide</b>	<b>0</b>	<b>0</b>	<b>0</b>	<b>0</b>
<b>B Offences Against The Person</b>	<b>125</b>	<b>72.7%</b>	<b>47</b>	<b>27.3%</b>
<b>C Sexual Offences</b>	<b>11</b>	<b>91.7%</b>	<b>1</b>	<b>8.3%</b>
<b>D Burglary</b>	<b>55</b>	<b>82.1%</b>	<b>12</b>	<b>17.9%</b>
<b>E Robbery</b>	<b>5</b>	<b>71.4%</b>	<b>2</b>	<b>28.6%</b>
<b>F Theft And Handling</b>	<b>275</b>	<b>95.2%</b>	<b>14</b>	<b>4.8%</b>
<b>G Fraud And Forgery</b>	<b>13</b>	<b>72.2%</b>	<b>5</b>	<b>27.8%</b>
<b>H Criminal Damage</b>	<b>74</b>	<b>86.0%</b>	<b>12</b>	<b>14.0%</b>
<b>I Drugs Offences</b>	<b>133</b>	<b>97.8%</b>	<b>3</b>	<b>2.2%</b>
<b>J Public Order Offences</b>	<b>152</b>	<b>82.2%</b>	<b>33</b>	<b>17.8%</b>
<b>K All Other Offences (excluding Motoring)</b>	<b>57</b>	<b>83.8%</b>	<b>11</b>	<b>16.2%</b>
<b>L Motoring Offences</b>	<b>191</b>	<b>89.3%</b>	<b>23</b>	<b>10.7%</b>
<b>Admin Finalisations</b>	<b>0</b>	<b>0.0%</b>	<b>7</b>	<b>100.0%</b>
<b>TOTAL</b>	<b>1,091</b>	<b>86.5%</b>	<b>170</b>	<b>13.5%</b>