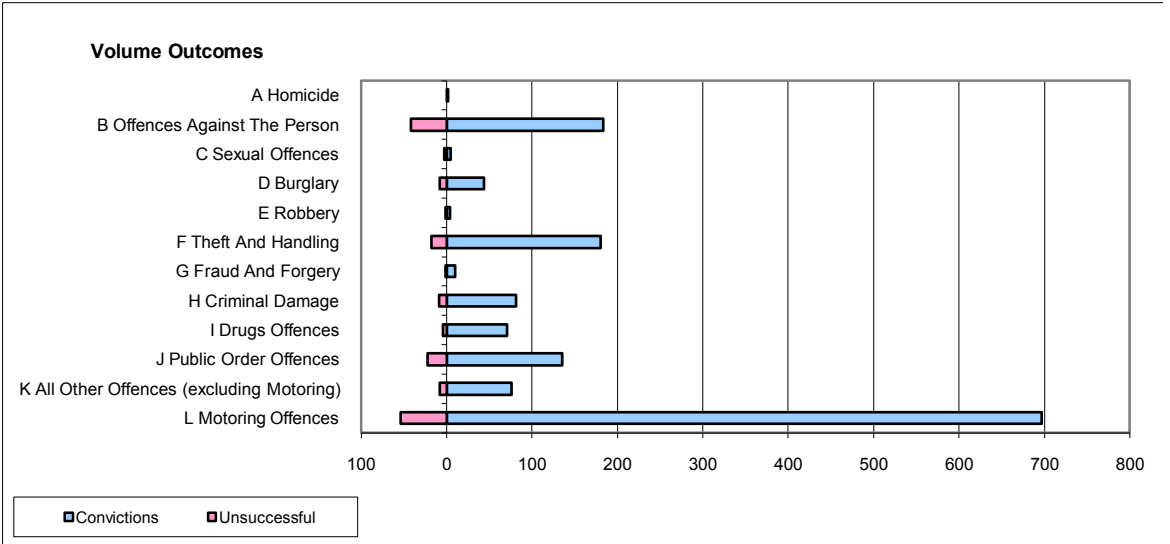
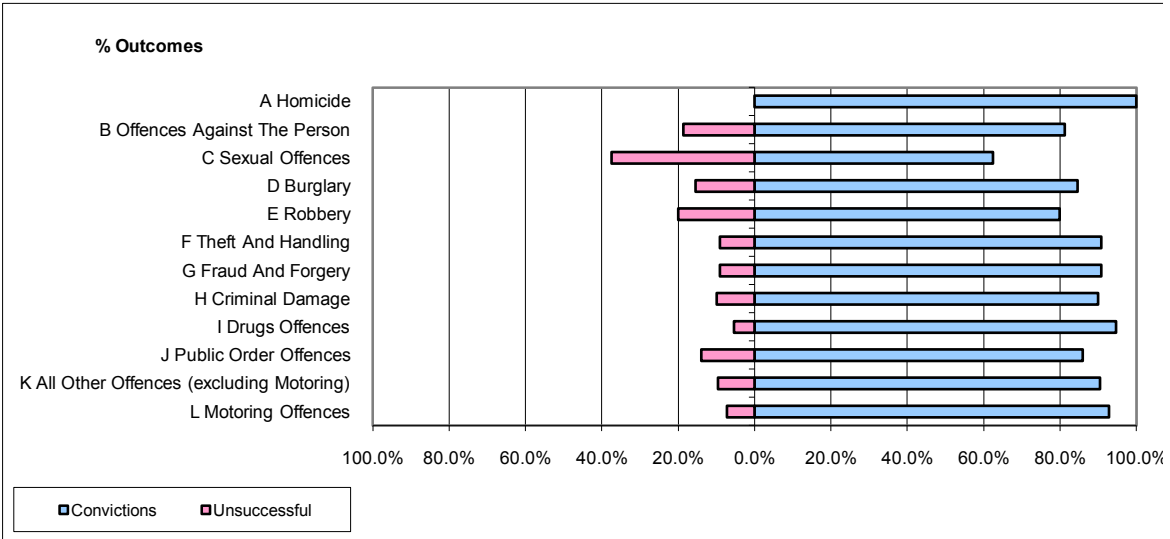


CPS OUTCOMES BY PRINCIPAL OFFENCE CATEGORY

July 2009

P04-Cheshire



	Convictions		Unsuccessful	
	Number of Defendants	%	Number of Defendants	%
A Homicide	2	100.0%	0	0.0%
B Offences Against The Person	183	81.3%	42	18.7%
C Sexual Offences	5	62.5%	3	37.5%
D Burglary	44	84.6%	8	15.4%
E Robbery	4	80.0%	1	20.0%
F Theft And Handling	180	90.9%	18	9.1%
G Fraud And Forgery	10	90.9%	1	9.1%
H Criminal Damage	81	90.0%	9	10.0%
I Drugs Offences	71	94.7%	4	5.3%
J Public Order Offences	135	86.0%	22	14.0%
K All Other Offences (excluding Motoring)	76	90.5%	8	9.5%
L Motoring Offences	697	92.8%	54	7.2%
Admin Finalisations	0	0.0%	11	100.0%
TOTAL	1,488	89.2%	181	10.8%