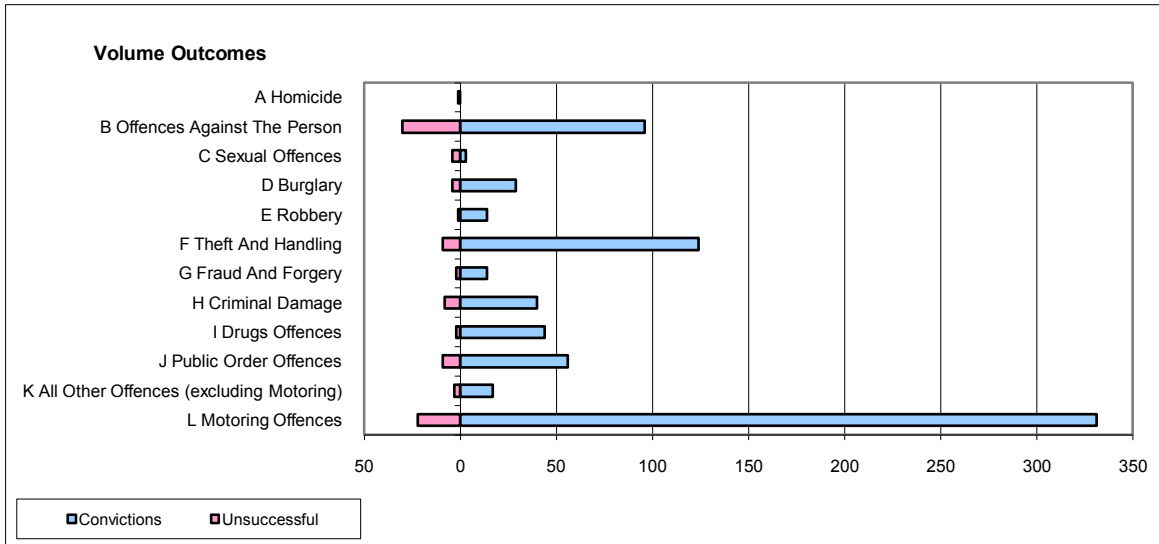
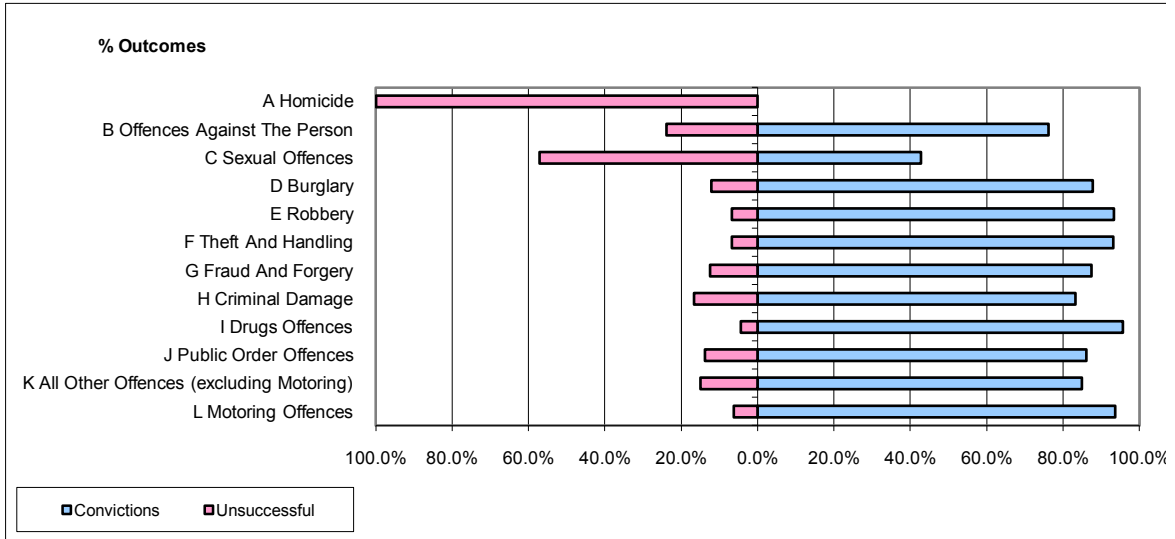


CPS OUTCOMES BY PRINCIPAL OFFENCE CATEGORY

July 2009

P02-Bedfordshire



	Convictions		Unsuccessful	
	Number of Defendants	%	Number of Defendants	%
A Homicide	0	0.0%	1	100.0%
B Offences Against The Person	96	76.2%	30	23.8%
C Sexual Offences	3	42.9%	4	57.1%
D Burglary	29	87.9%	4	12.1%
E Robbery	14	93.3%	1	6.7%
F Theft And Handling	124	93.2%	9	6.8%
G Fraud And Forgery	14	87.5%	2	12.5%
H Criminal Damage	40	83.3%	8	16.7%
I Drugs Offences	44	95.7%	2	4.3%
J Public Order Offences	56	86.2%	9	13.8%
K All Other Offences (excluding Motoring)	17	85.0%	3	15.0%
L Motoring Offences	331	93.8%	22	6.2%
Admin Finalisations	0	0.0%	16	100.0%
TOTAL	768	87.4%	111	12.6%