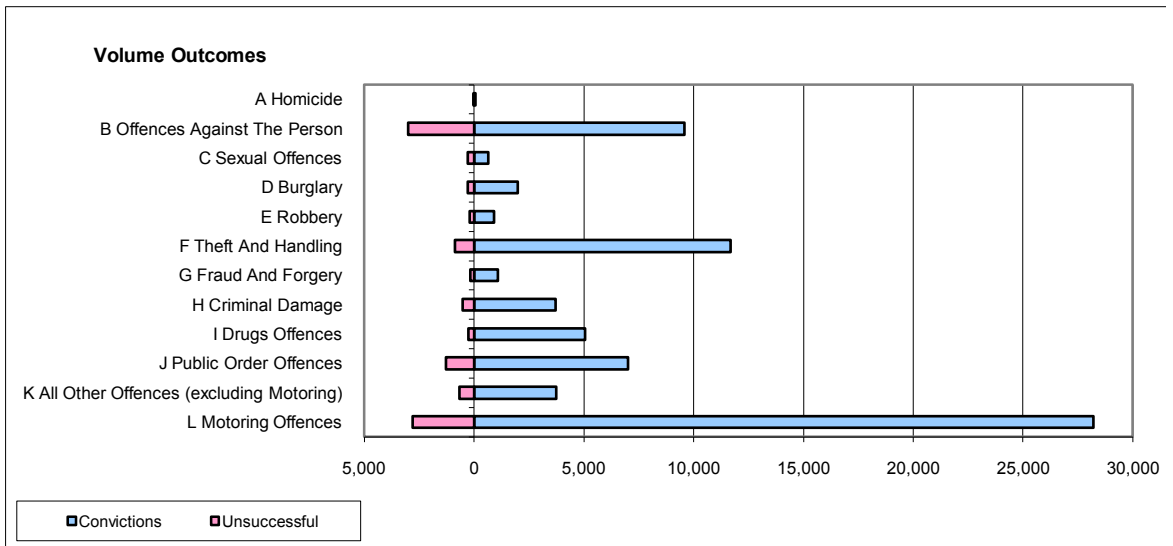
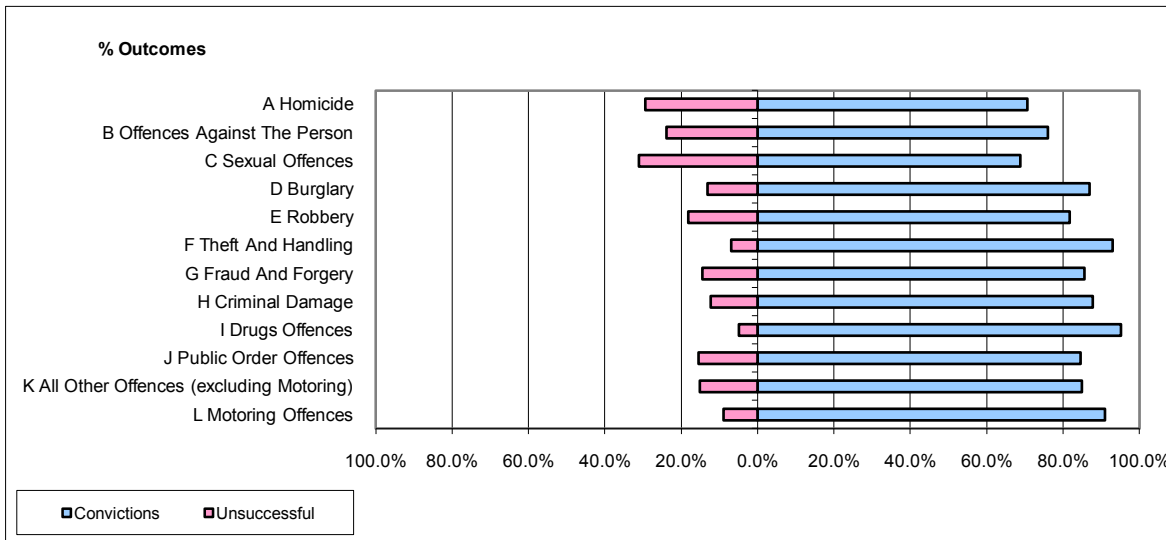


CPS OUTCOMES BY PRINCIPAL OFFENCE CATEGORY

June 2009

42 Areas



	Convictions		Unsuccessful	
	Number of Defendants	%	Number of Defendants	%
A Homicide	65	70.7%	27	29.3%
B Offences Against The Person	9,573	76.1%	3,008	23.9%
C Sexual Offences	659	68.9%	298	31.1%
D Burglary	1,982	86.9%	299	13.1%
E Robbery	904	81.8%	201	18.2%
F Theft And Handling	11,679	93.0%	874	7.0%
G Fraud And Forgery	1,085	85.6%	183	14.4%
H Criminal Damage	3,705	87.8%	516	12.2%
I Drugs Offences	5,042	95.2%	254	4.8%
J Public Order Offences	7,010	84.6%	1,276	15.4%
K All Other Offences (excluding Motoring)	3,741	84.9%	664	15.1%
L Motoring Offences	28,197	91.0%	2,785	9.0%
Admin Finalisations	0	0.0%	1,078	100.0%
TOTAL	73,642	86.5%	11,463	13.5%