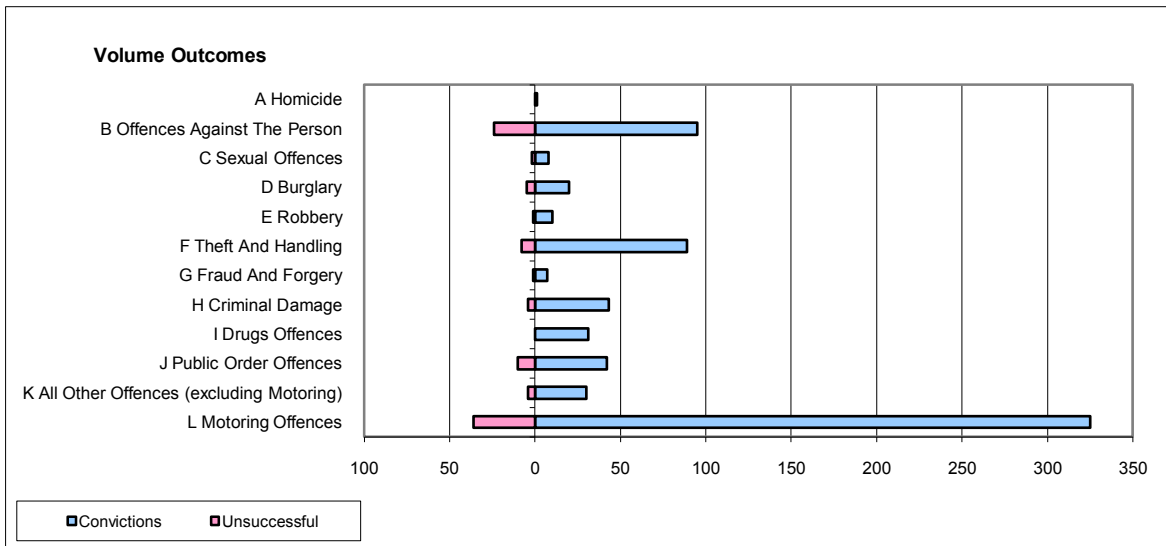
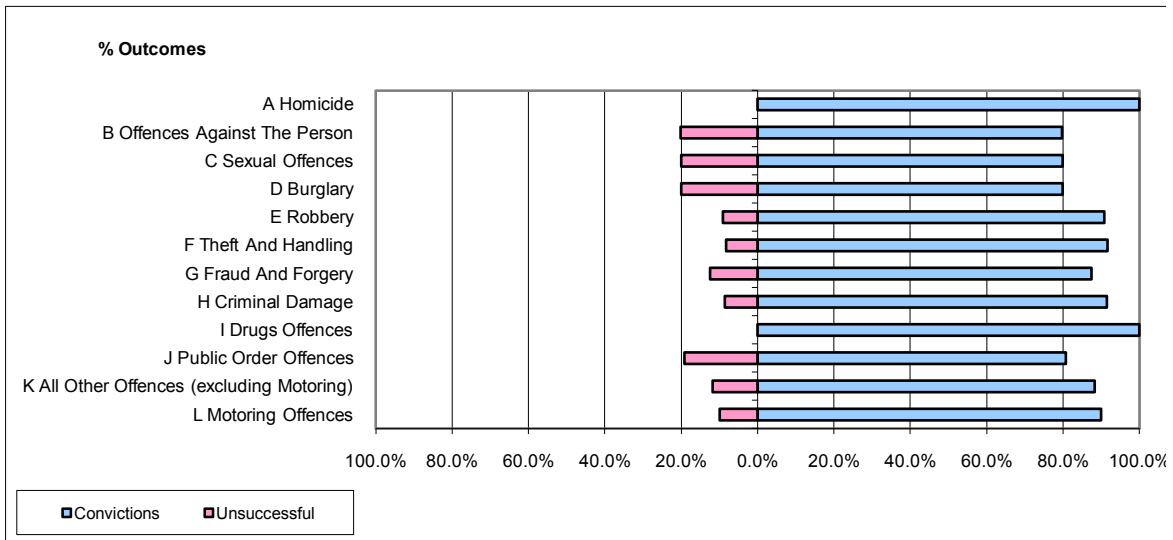


CPS OUTCOMES BY PRINCIPAL OFFENCE CATEGORY

June 2009

P43-Wiltshire



	Convictions		Unsuccessful	
	Number of Defendants	%	Number of Defendants	%
A Homicide	1	100.0%	0	0.0%
B Offences Against The Person	95	79.8%	24	20.2%
C Sexual Offences	8	80.0%	2	20.0%
D Burglary	20	80.0%	5	20.0%
E Robbery	10	90.9%	1	9.1%
F Theft And Handling	89	91.8%	8	8.2%
G Fraud And Forgery	7	87.5%	1	12.5%
H Criminal Damage	43	91.5%	4	8.5%
I Drugs Offences	31	100.0%	0	0.0%
J Public Order Offences	42	80.8%	10	19.2%
K All Other Offences (excluding Motoring)	30	88.2%	4	11.8%
L Motoring Offences	325	90.0%	36	10.0%
Admin Finalisations	0	0.0%	5	100.0%
TOTAL	701	87.5%	100	12.5%