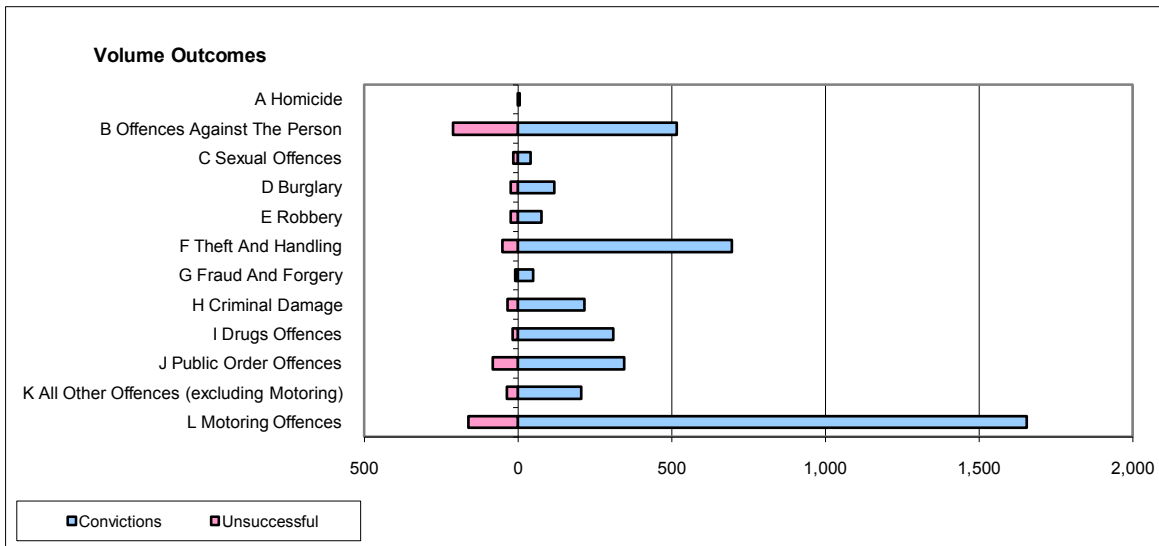
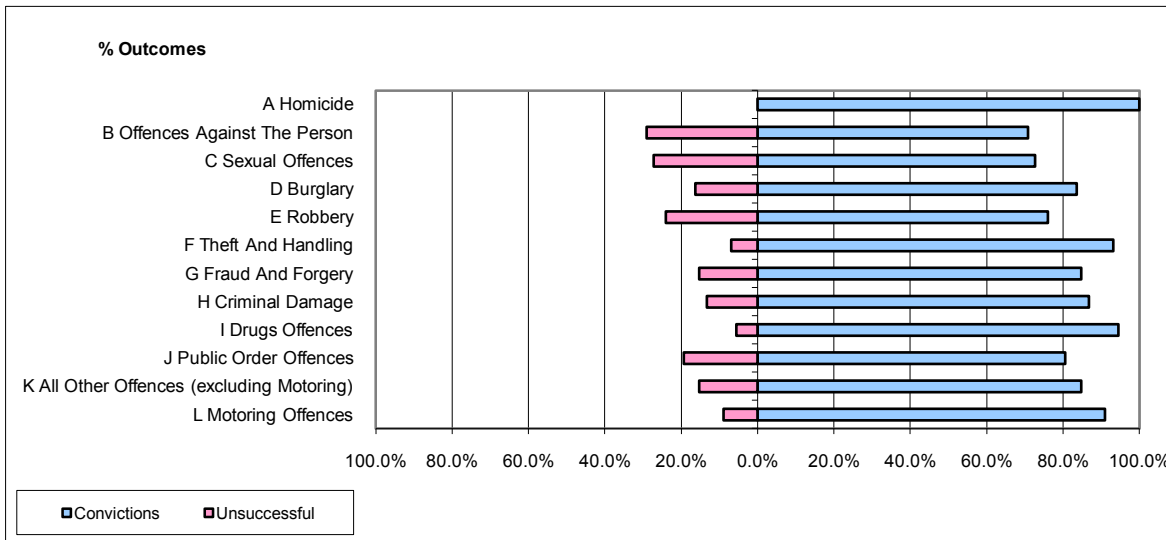


CPS OUTCOMES BY PRINCIPAL OFFENCE CATEGORY

June 2009

P41-WestMidlands



	Convictions		Unsuccessful	
	Number of Defendants	%	Number of Defendants	%
A Homicide	5	100.0%	0	0.0%
B Offences Against The Person	516	70.9%	212	29.1%
C Sexual Offences	40	72.7%	15	27.3%
D Burglary	118	83.7%	23	16.3%
E Robbery	76	76.0%	24	24.0%
F Theft And Handling	696	93.2%	51	6.8%
G Fraud And Forgery	50	84.7%	9	15.3%
H Criminal Damage	217	86.8%	33	13.2%
I Drugs Offences	310	94.5%	18	5.5%
J Public Order Offences	346	80.7%	83	19.3%
K All Other Offences (excluding Motoring)	206	84.8%	37	15.2%
L Motoring Offences	1,654	91.1%	162	8.9%
Admin Finalisations	0	0.0%	55	100.0%
TOTAL	4,234	85.4%	722	14.6%