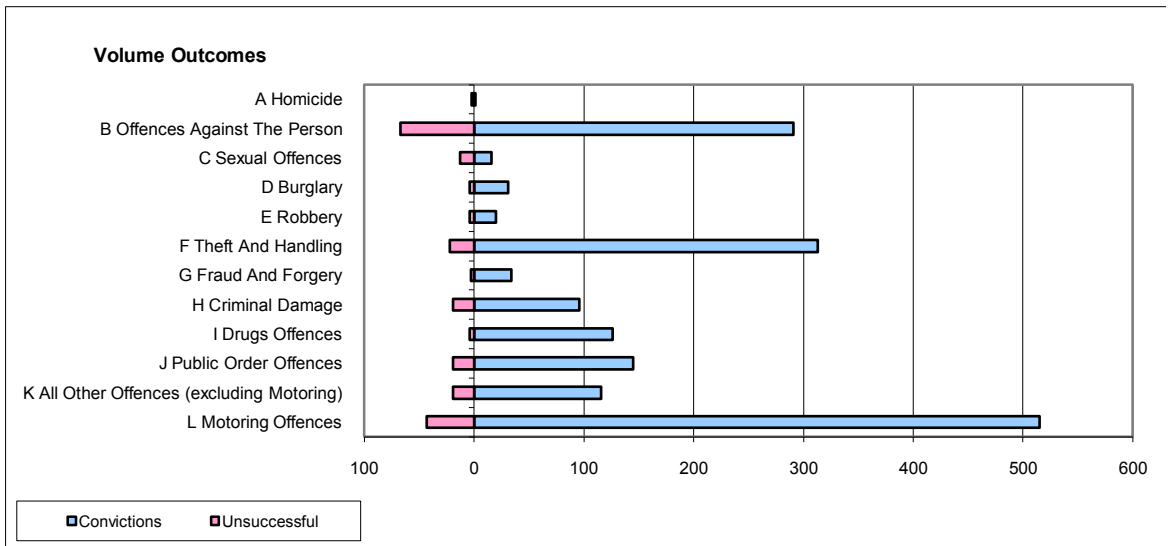
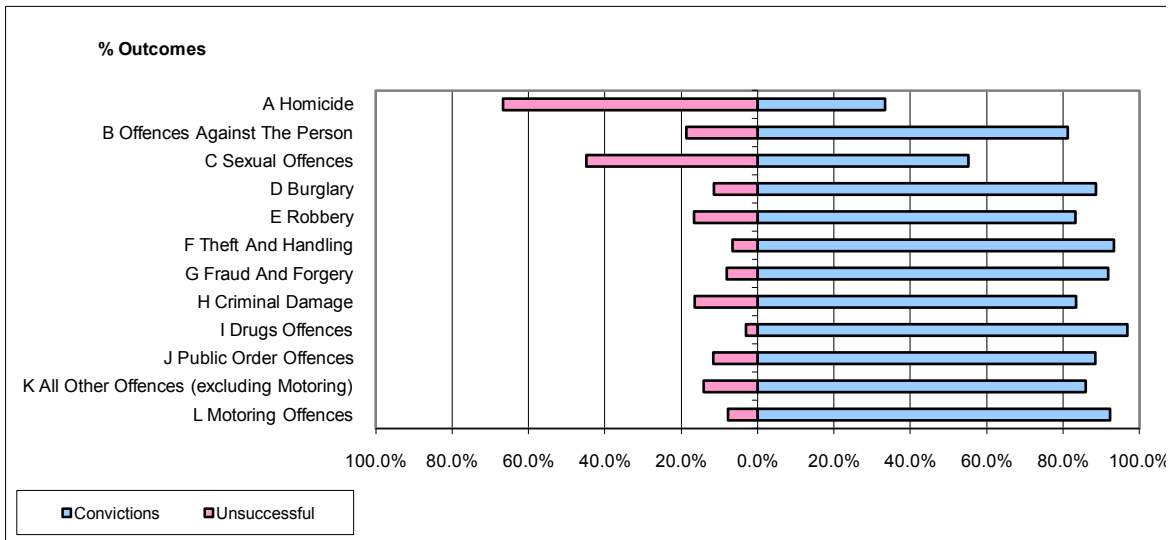


**CPS OUTCOMES BY PRINCIPAL OFFENCE CATEGORY**

June 2009

**P37-Sussex**



	Convictions		Unsuccessful	
	Number of Defendants	%	Number of Defendants	%
<b>A Homicide</b>	<b>1</b>	<b>33.3%</b>	<b>2</b>	<b>66.7%</b>
<b>B Offences Against The Person</b>	<b>291</b>	<b>81.3%</b>	<b>67</b>	<b>18.7%</b>
<b>C Sexual Offences</b>	<b>16</b>	<b>55.2%</b>	<b>13</b>	<b>44.8%</b>
<b>D Burglary</b>	<b>31</b>	<b>88.6%</b>	<b>4</b>	<b>11.4%</b>
<b>E Robbery</b>	<b>20</b>	<b>83.3%</b>	<b>4</b>	<b>16.7%</b>
<b>F Theft And Handling</b>	<b>313</b>	<b>93.4%</b>	<b>22</b>	<b>6.6%</b>
<b>G Fraud And Forgery</b>	<b>34</b>	<b>91.9%</b>	<b>3</b>	<b>8.1%</b>
<b>H Criminal Damage</b>	<b>96</b>	<b>83.5%</b>	<b>19</b>	<b>16.5%</b>
<b>I Drugs Offences</b>	<b>126</b>	<b>96.9%</b>	<b>4</b>	<b>3.1%</b>
<b>J Public Order Offences</b>	<b>145</b>	<b>88.4%</b>	<b>19</b>	<b>11.6%</b>
<b>K All Other Offences (excluding Motoring)</b>	<b>116</b>	<b>85.9%</b>	<b>19</b>	<b>14.1%</b>
<b>L Motoring Offences</b>	<b>515</b>	<b>92.3%</b>	<b>43</b>	<b>7.7%</b>
<b>Admin Finalisations</b>	<b>0</b>	<b>0.0%</b>	<b>39</b>	<b>100.0%</b>
<b>TOTAL</b>	<b>1,704</b>	<b>86.9%</b>	<b>258</b>	<b>13.1%</b>