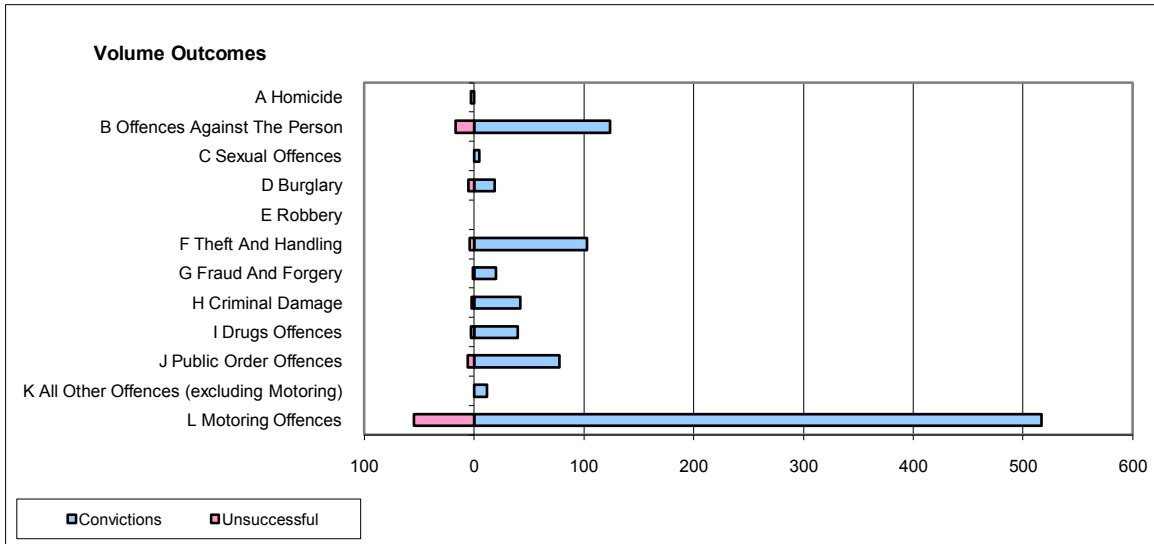
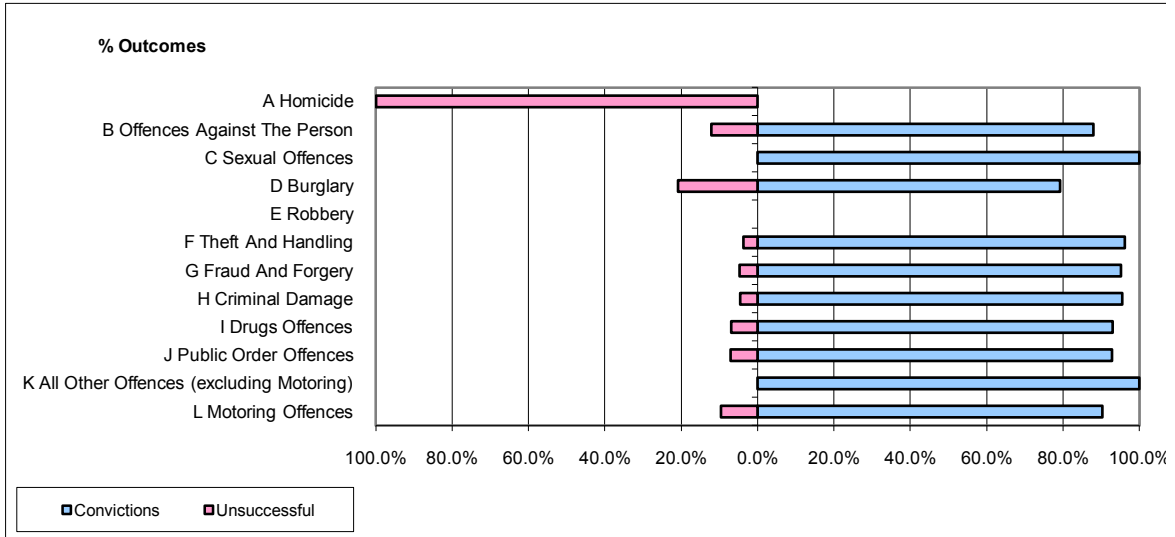


CPS OUTCOMES BY PRINCIPAL OFFENCE CATEGORY

June 2009

P35-Suffolk



	Convictions		Unsuccessful	
	Number of Defendants	%	Number of Defendants	%
A Homicide	0	0.0%	3	100.0%
B Offences Against The Person	124	87.9%	17	12.1%
C Sexual Offences	5	100.0%	0	0.0%
D Burglary	19	79.2%	5	20.8%
E Robbery	0	0	0	0
F Theft And Handling	103	96.3%	4	3.7%
G Fraud And Forgery	20	95.2%	1	4.8%
H Criminal Damage	42	95.5%	2	4.5%
I Drugs Offences	40	93.0%	3	7.0%
J Public Order Offences	78	92.9%	6	7.1%
K All Other Offences (excluding Motoring)	12	100.0%	0	0.0%
L Motoring Offences	517	90.4%	55	9.6%
Admin Finalisations	0	0.0%	21	100.0%
TOTAL	960	89.1%	117	10.9%