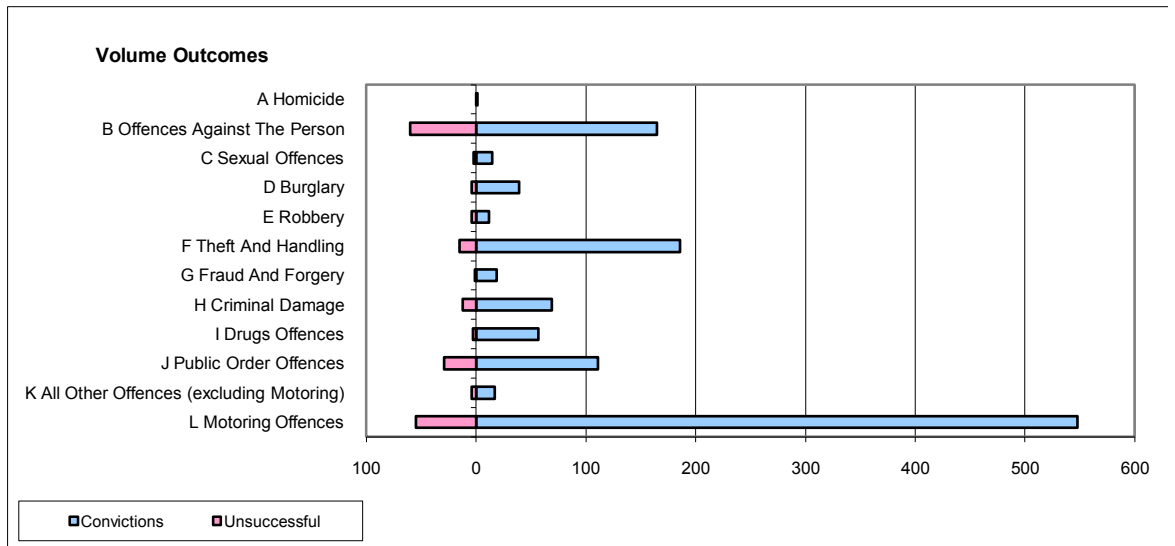
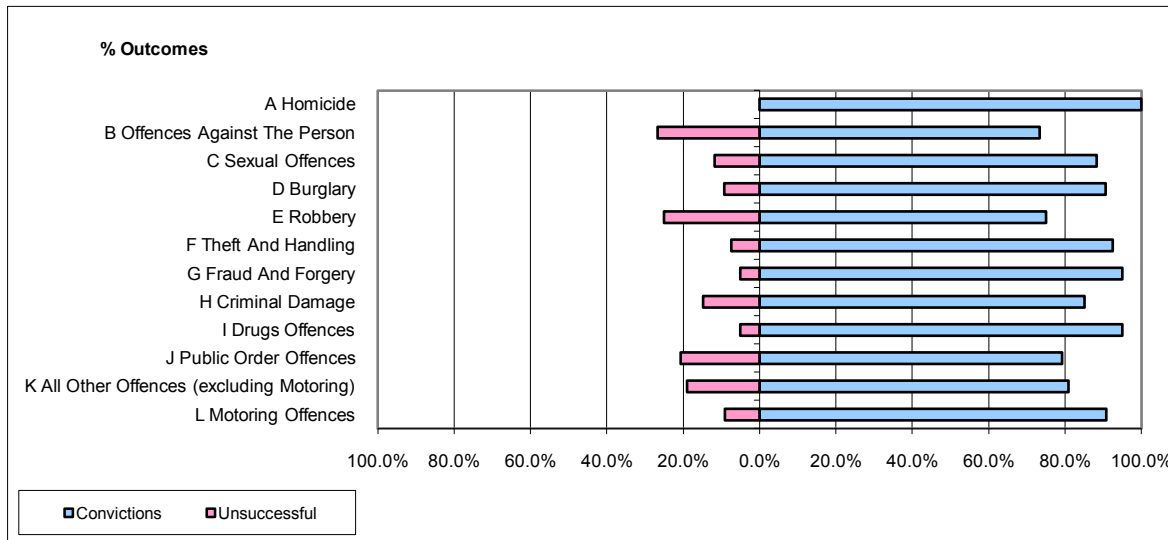


CPS OUTCOMES BY PRINCIPAL OFFENCE CATEGORY

June 2009

P34-Staffordshire



| | Convictions | | Unsuccessful | |
|--|----------------------|--------------|----------------------|--------------|
| | Number of Defendants | % | Number of Defendants | % |
| A Homicide | 1 | 100.0% | 0 | 0.0% |
| B Offences Against The Person | 165 | 73.3% | 60 | 26.7% |
| C Sexual Offences | 15 | 88.2% | 2 | 11.8% |
| D Burglary | 39 | 90.7% | 4 | 9.3% |
| E Robbery | 12 | 75.0% | 4 | 25.0% |
| F Theft And Handling | 186 | 92.5% | 15 | 7.5% |
| G Fraud And Forgery | 19 | 95.0% | 1 | 5.0% |
| H Criminal Damage | 69 | 85.2% | 12 | 14.8% |
| I Drugs Offences | 57 | 95.0% | 3 | 5.0% |
| J Public Order Offences | 111 | 79.3% | 29 | 20.7% |
| K All Other Offences (excluding Motoring) | 17 | 81.0% | 4 | 19.0% |
| L Motoring Offences | 548 | 90.9% | 55 | 9.1% |
| Admin Finalisations | 0 | 0.0% | 14 | 100.0% |
| TOTAL | 1,239 | 85.9% | 203 | 14.1% |