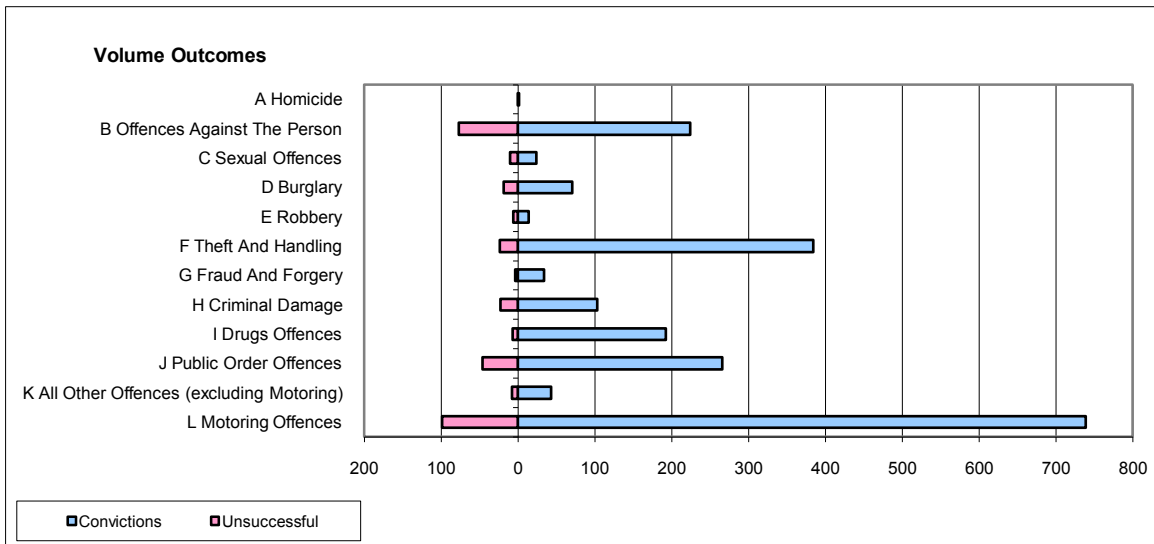
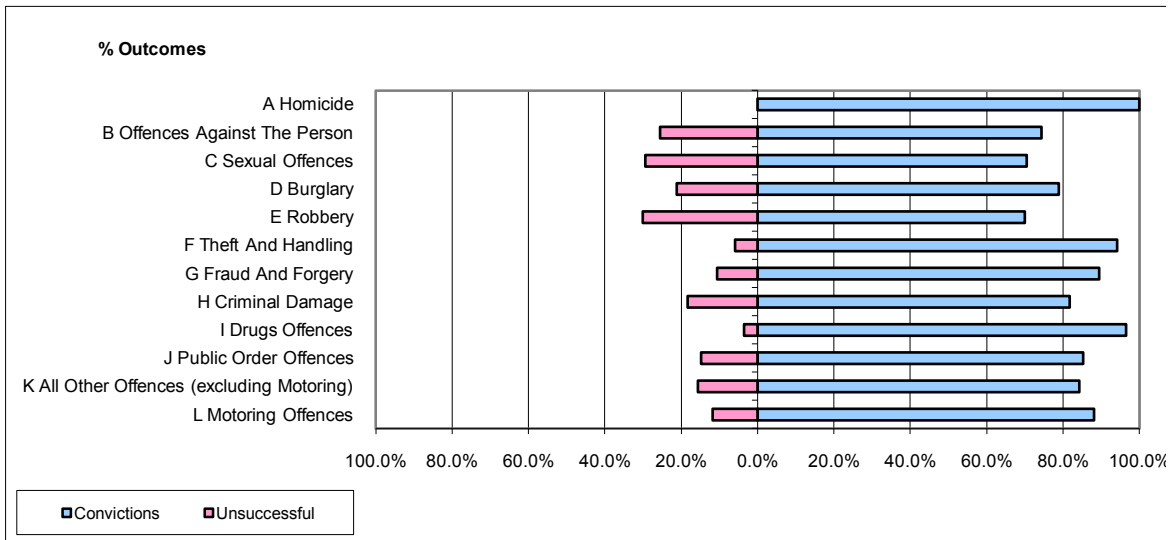


CPS OUTCOMES BY PRINCIPAL OFFENCE CATEGORY

June 2009

P32-SouthWales



	Convictions		Unsuccessful	
	Number of Defendants	%	Number of Defendants	%
A Homicide	1	100.0%	0	0.0%
B Offences Against The Person	224	74.4%	77	25.6%
C Sexual Offences	24	70.6%	10	29.4%
D Burglary	71	78.9%	19	21.1%
E Robbery	14	70.0%	6	30.0%
F Theft And Handling	384	94.1%	24	5.9%
G Fraud And Forgery	34	89.5%	4	10.5%
H Criminal Damage	103	81.7%	23	18.3%
I Drugs Offences	192	96.5%	7	3.5%
J Public Order Offences	266	85.3%	46	14.7%
K All Other Offences (excluding Motoring)	43	84.3%	8	15.7%
L Motoring Offences	739	88.2%	99	11.8%
Admin Finalisations	0	0.0%	41	100.0%
TOTAL	2,095	85.2%	364	14.8%