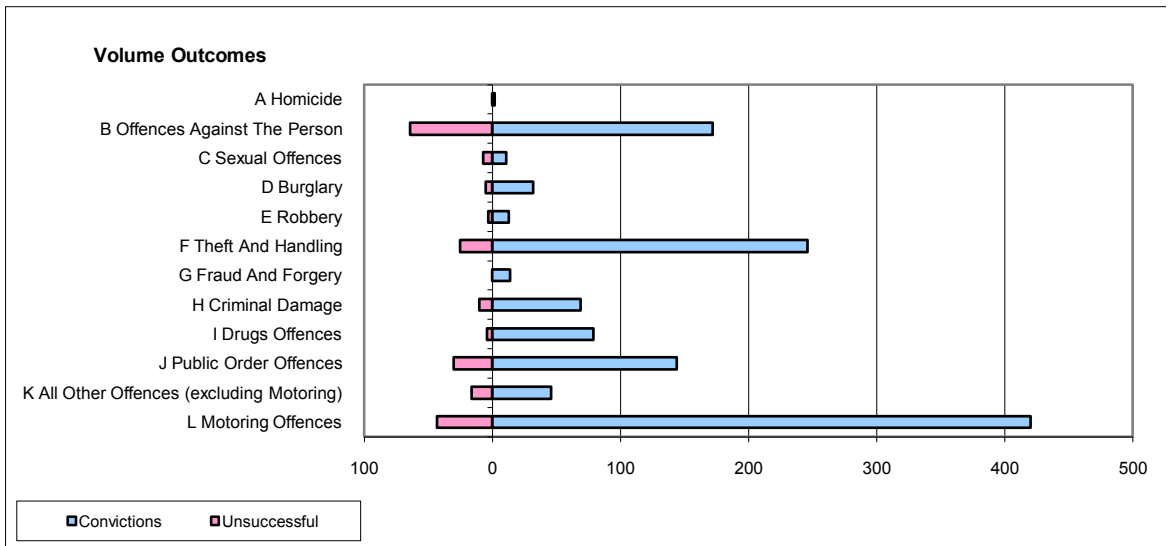
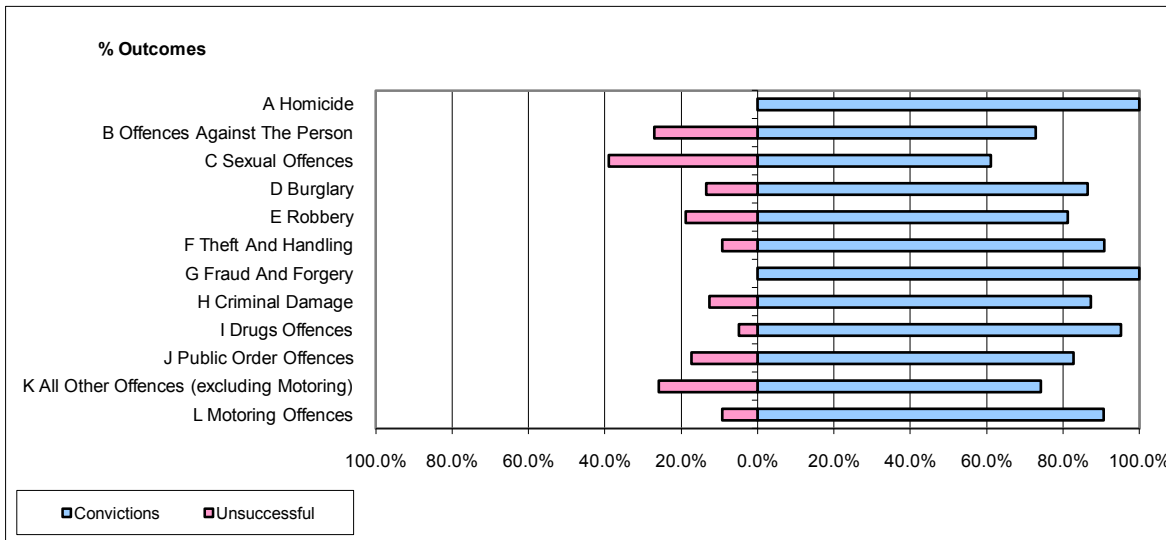


CPS OUTCOMES BY PRINCIPAL OFFENCE CATEGORY

June 2009

P31-Nottinghamshire



	Convictions		Unsuccessful	
	Number of Defendants	%	Number of Defendants	%
A Homicide	2	100.0%	0	0.0%
B Offences Against The Person	172	72.9%	64	27.1%
C Sexual Offences	11	61.1%	7	38.9%
D Burglary	32	86.5%	5	13.5%
E Robbery	13	81.3%	3	18.8%
F Theft And Handling	246	90.8%	25	9.2%
G Fraud And Forgery	14	100.0%	0	0.0%
H Criminal Damage	69	87.3%	10	12.7%
I Drugs Offences	79	95.2%	4	4.8%
J Public Order Offences	144	82.8%	30	17.2%
K All Other Offences (excluding Motoring)	46	74.2%	16	25.8%
L Motoring Offences	420	90.7%	43	9.3%
Admin Finalisations	0	0.0%	11	100.0%
TOTAL	1,248	85.1%	218	14.9%