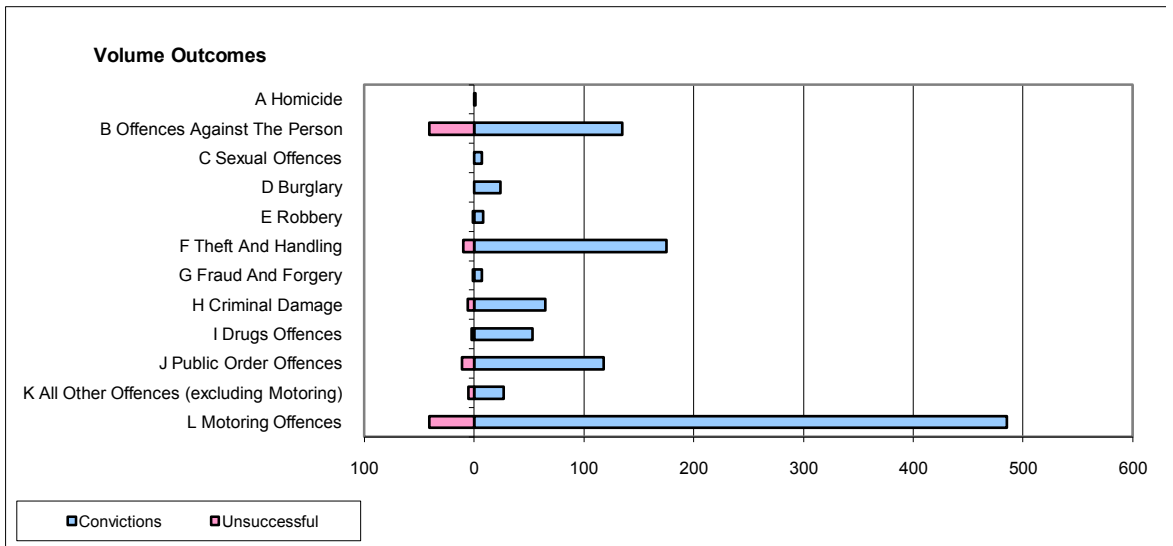
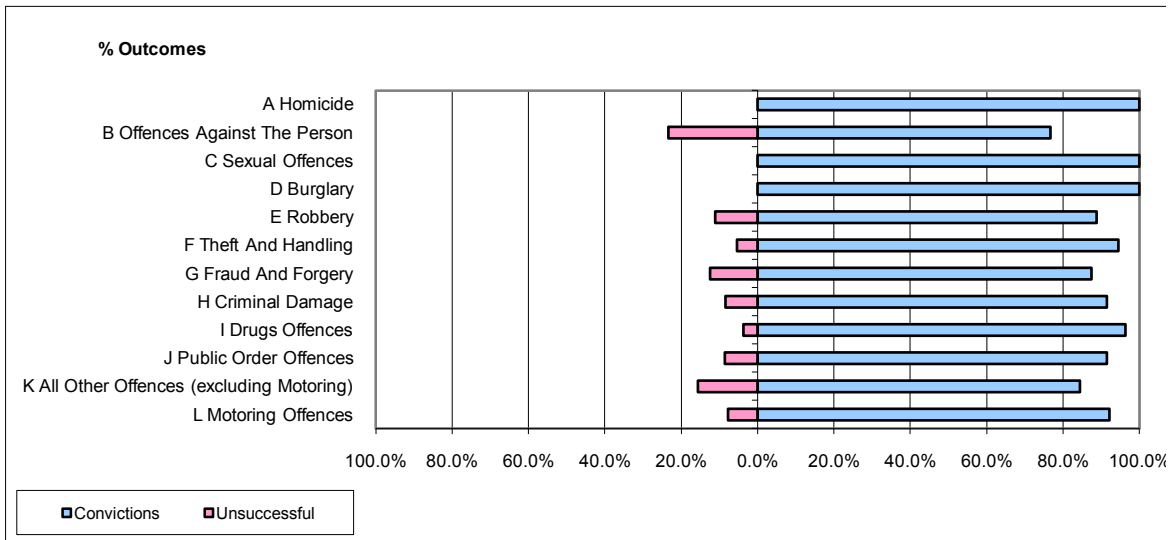


CPS OUTCOMES BY PRINCIPAL OFFENCE CATEGORY

June 2009

P29-NorthWales



	Convictions		Unsuccessful	
	Number of Defendants	%	Number of Defendants	%
A Homicide	1	100.0%	0	0.0%
B Offences Against The Person	135	76.7%	41	23.3%
C Sexual Offences	7	100.0%	0	0.0%
D Burglary	24	100.0%	0	0.0%
E Robbery	8	88.9%	1	11.1%
F Theft And Handling	175	94.6%	10	5.4%
G Fraud And Forgery	7	87.5%	1	12.5%
H Criminal Damage	65	91.5%	6	8.5%
I Drugs Offences	53	96.4%	2	3.6%
J Public Order Offences	118	91.5%	11	8.5%
K All Other Offences (excluding Motoring)	27	84.4%	5	15.6%
L Motoring Offences	485	92.2%	41	7.8%
Admin Finalisations	0	0.0%	5	100.0%
TOTAL	1,105	90.0%	123	10.0%