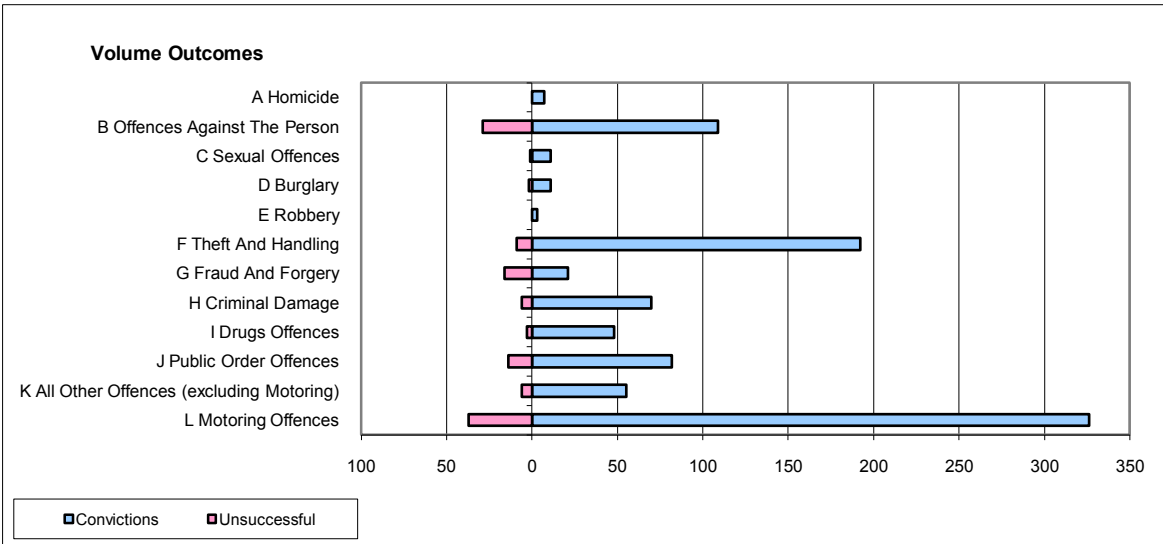
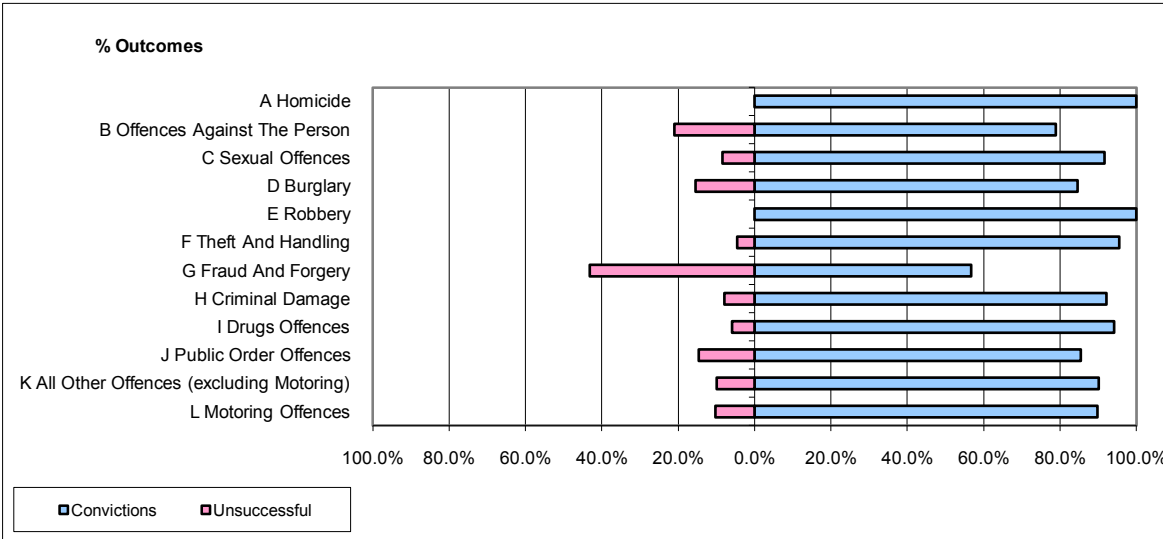


**CPS OUTCOMES BY PRINCIPAL OFFENCE CATEGORY**

**June 2009**

**P26-Norfolk**



	Convictions		Unsuccessful	
	Number of Defendants	%	Number of Defendants	%
<b>A Homicide</b>	7	100.0%	0	0.0%
<b>B Offences Against The Person</b>	109	79.0%	29	21.0%
<b>C Sexual Offences</b>	11	91.7%	1	8.3%
<b>D Burglary</b>	11	84.6%	2	15.4%
<b>E Robbery</b>	3	100.0%	0	0.0%
<b>F Theft And Handling</b>	192	95.5%	9	4.5%
<b>G Fraud And Forgery</b>	21	56.8%	16	43.2%
<b>H Criminal Damage</b>	70	92.1%	6	7.9%
<b>I Drugs Offences</b>	48	94.1%	3	5.9%
<b>J Public Order Offences</b>	82	85.4%	14	14.6%
<b>K All Other Offences (excluding Motoring)</b>	55	90.2%	6	9.8%
<b>L Motoring Offences</b>	326	89.8%	37	10.2%
<b>Admin Finalisations</b>	0	0.0%	20	100.0%
<b>TOTAL</b>	<b>935</b>	<b>86.7%</b>	<b>143</b>	<b>13.3%</b>